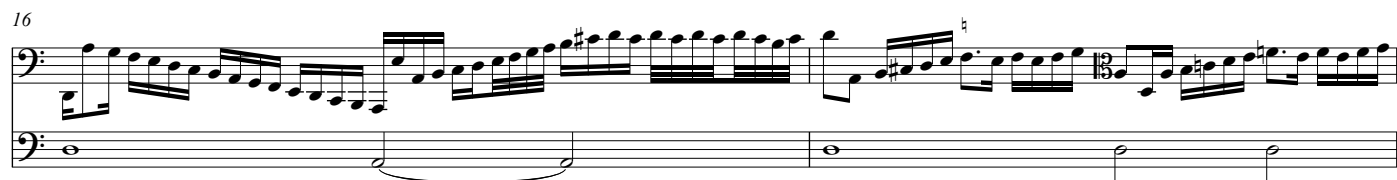
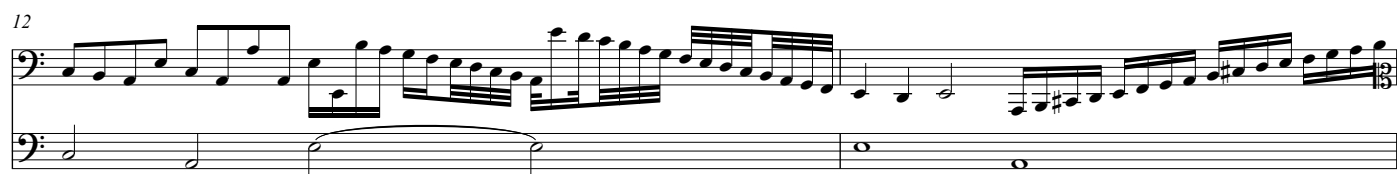


# Doulce memoire

(after Pierre Sandrin)

Vincenzo Bonizzi  
Canzone detta Dolce me moy



1. soprano clef occurs one note too early in facsimile
2. both Bs in facsimile, should be Cs (see similar passage at M21 where it is correct)

20

22

24

27

30

32

36

39

41

3.

4.

3. bass clef occurs one note too early in facsimile

4. first two notes are d in facsimile, should be e

43

46

49

51

54

56

57