

The Valentine

Set of Lancers

Edward Elgar, 1880
Transcribed by John Morrison, 2005

No. 1

Flute

f

CODA

ff

p

DC.

No. 2

f

1st & 3rd time

8 8 D.S.

2nd & 4th time

p

D.S.

No. 3

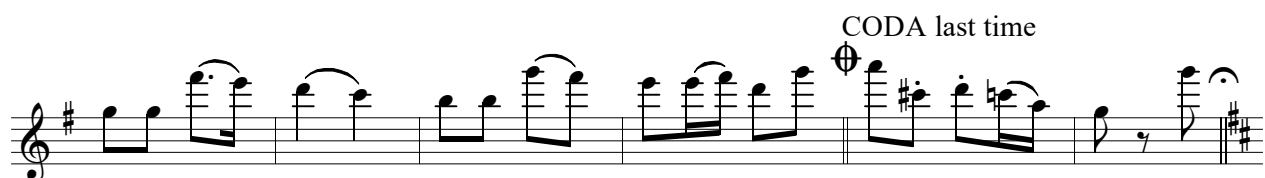
Three staves of music for No. 3. The first staff is in 6/8 time, key of D major, starting with a piano (*p*) dynamic. The second staff includes a repeat sign with the instruction "Last time" above it, followed by a piano (*p*) dynamic. The third staff starts with a forte (*f*) dynamic, followed by a fortissimo (*ff*) dynamic, and ends with a piano (*p*) dynamic and a double bar line with "D.C." above it.

No. 4

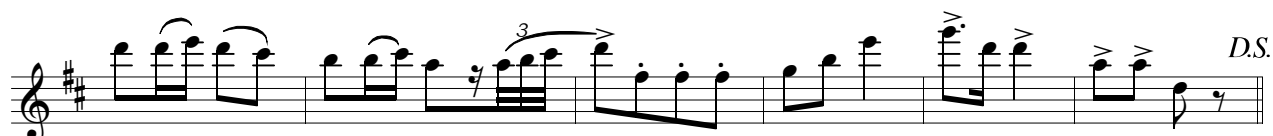
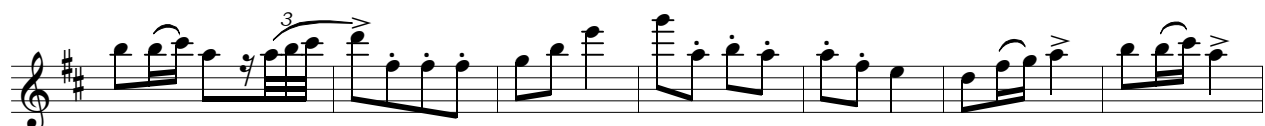
Four staves of music for No. 4. The first staff is in 2/4 time, key of D major, starting with a forte (*f*) dynamic. The second staff starts with a fortissimo (*ff*) dynamic, followed by a piano (*p*) dynamic. The third staff continues the melody. The fourth staff ends with a double bar line and "D.C." above it.

No. 5

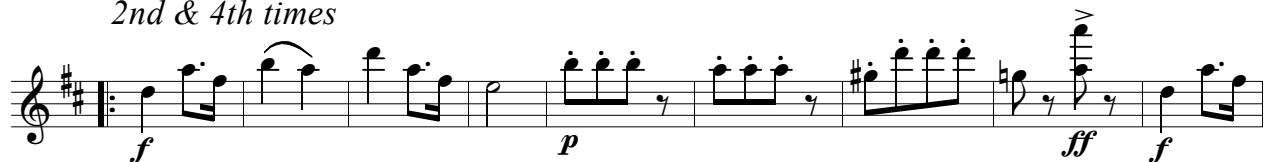
INTRODUCTION - Alla Marcia



1st time



2nd & 4th times



4.

The Valentine - Flute

3rd time

3rd time

p

f

p *mf*

D.S.

This section contains five staves of music in G major and 6/8 time. The first staff begins with a piano (*p*) dynamic. The second staff features a forte (*f*) dynamic. The third and fourth staves show a range of dynamics including piano (*p*) and mezzo-forte (*mf*). The section concludes with a double bar line and the instruction *D.S.* (Da Segno).

CODA

rall.

Andante

f *ff marcato* *rall. molto*

This section contains two staves of music. The first staff is in 2/4 time and includes the dynamics *f* (forte) and *ff marcato* (fortissimo marcato). The second staff is in 3/4 time and includes the instruction *rall. molto* (rallentando molto). The section ends with a final double bar line.