

Solo Piano

Samuel Arnold

---

# Keyboard Lessons, Op. 12

Lesson 1 in C Major

**MCP**

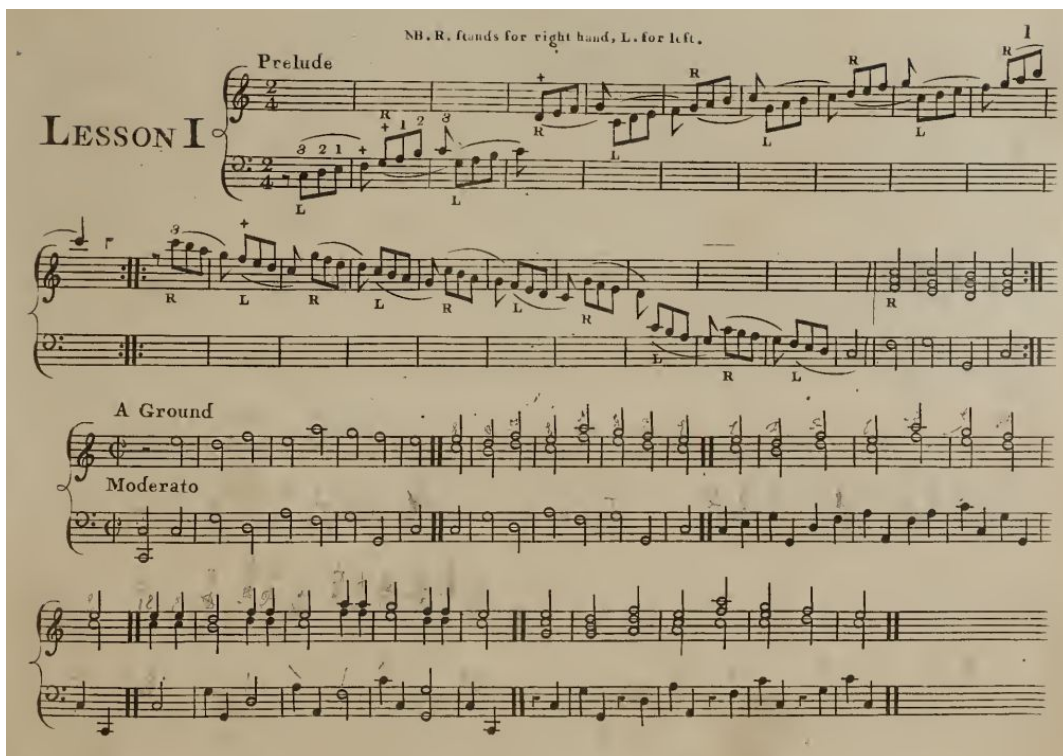
Mississippi College Piano Pedagogy

## About this edition

---

This edition was created by graduate piano pedagogy students and faculty at Mississippi College. As much as possible, these new engravings are based on first edition or manuscript copies.

The aim of these editions is to provide teachers and students with clean, legible copies of repertoire in the public domain.



# MCPP

Mississippi College Piano Pedagogy

©2019 Mississippi College Piano Pedagogy.

Creative Commons Attribution 4.0 International License.

<https://creativecommons.org/licenses/by/4.0/>

Permission is granted to share, copy, and redistribute this material.

# Keyboard Lessons, Op. 12

No. 1 in C Major

Samuel Arnold

## Prelude

6

12

17

23

# Ground

Measures 1-9 of the piece. The key signature has one flat (B-flat). The time signature is 2/4. The melody in the right hand consists of half notes: G4, A4, Bb4, C5, Bb4, A4, G4, F4, E4. The bass line in the left hand consists of half notes: D3, C3, Bb2, A2, G2, F2, E2, D2, C2. A fermata is placed over the first measure.

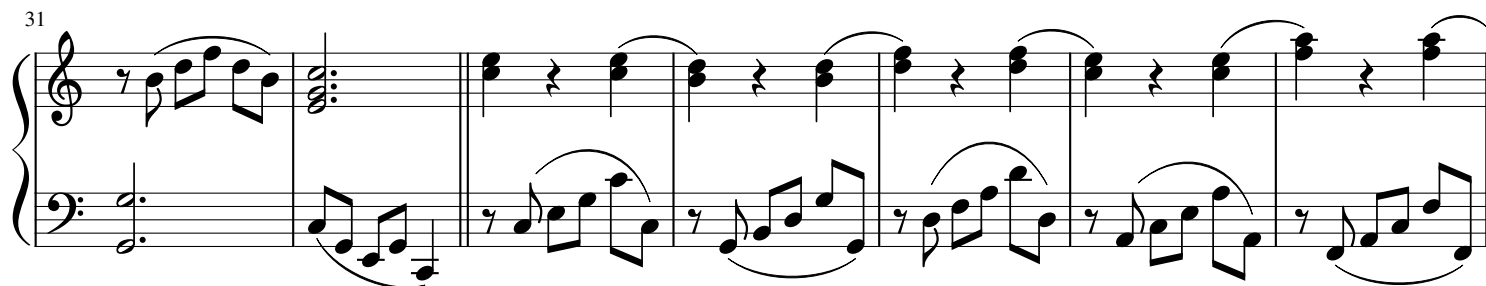
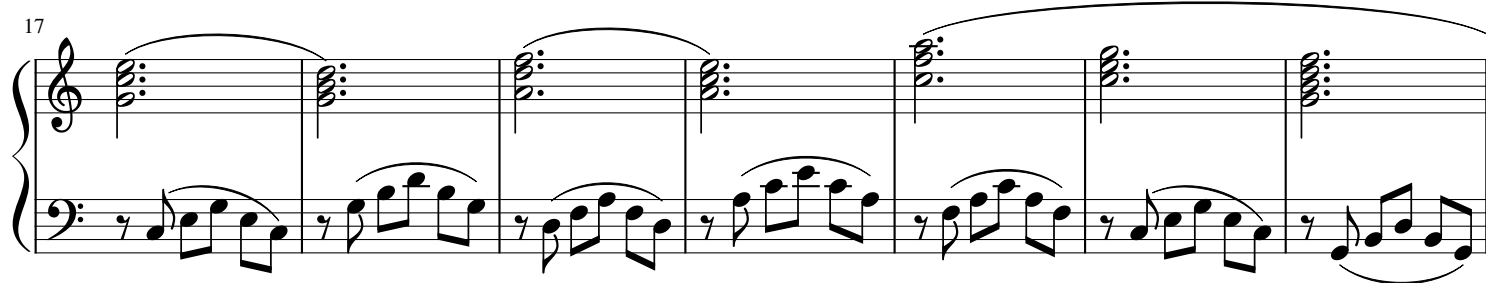
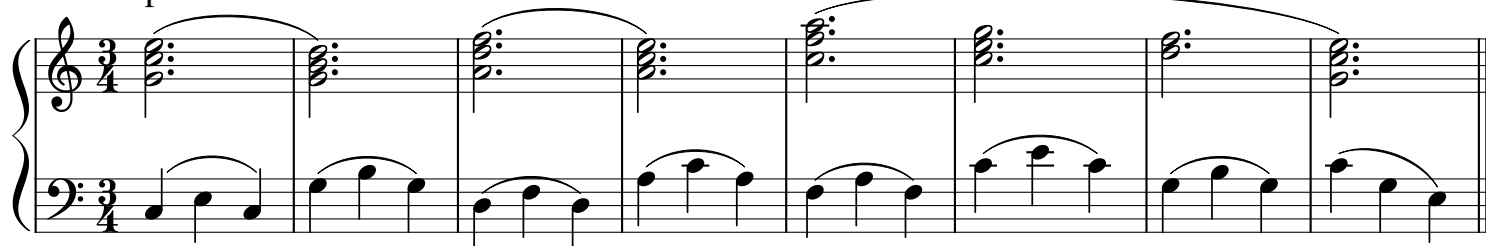
Measures 10-17. The right hand features a sequence of chords: D4-F4, E4-G4, F4-A4, E4-G4, D4-F4, C4-E4, Bb3-D4, A3-C4. Fingerings are indicated: 4 2, 3 1, 4 2, 3 1, 5 3, 4 2, 3 1, 2 1. The left hand continues with half notes: Bb2, A2, G2, F2, E2, D2, C2, Bb2.

Measures 18-25. The right hand continues with chords: D4-F4, E4-G4, F4-A4, E4-G4, D4-F4, C4-E4, Bb3-D4, A3-C4. The left hand continues with half notes: A2, G2, F2, E2, D2, C2, Bb2, A2. A fermata is placed over the final measure.

Measures 26-33. The right hand continues with chords: D4-F4, E4-G4, F4-A4, E4-G4, D4-F4, C4-E4, Bb3-D4, A3-C4. The left hand continues with half notes: G2, F2, E2, D2, C2, Bb2, A2, G2. A fermata is placed over the final measure.

Measures 34-41. The right hand continues with chords: D4-F4, E4-G4, F4-A4, E4-G4, D4-F4, C4-E4, Bb3-D4, A3-C4. Fingerings are indicated: 5 3 1, 4 2 1, 5 3 1, 4 2 1, 5 3 1, 4 2 1, 3 1, 2 1. The left hand continues with half notes: F2, E2, D2, C2, Bb2, A2, G2, F2. A fermata is placed over the final measure.

Tempo di Minuetto



38

38

45

5 4 2 1

5 4 2 1

[illegible]

54

60

60

65

Measures 65-69. Treble staff: Measures 65-66 have triplets of eighth notes (G4, A4, B4) and (C5, D5, E5) respectively. Measures 67-68 have chords (G4, B4, D5) and (C5, E5, G5) respectively. Measure 69 has triplets of eighth notes (G4, A4, B4), (C5, D5, E5), and (F5, G5, A5). Bass staff: Measures 65-66 have eighth notes (G2, F2, E2) and (D2, C2, B1) respectively. Measures 67-68 have triplets of eighth notes (G2, A2, B2) and (C3, D3, E3) respectively. Measure 69 has eighth notes (G2, F2, E2), (D2, C2, B1), and (A1, G1, F1).

70

Measures 70-75. Treble staff: Measures 70-71 have chords (G4, B4, D5) and (C5, E5, G5) respectively. Measures 72-73 have triplets of eighth notes (G4, A4, B4) and (C5, D5, E5) respectively. Measures 74-75 have chords (G4, B4, D5) and (C5, E5, G5) respectively. Bass staff: Measures 70-71 have triplets of eighth notes (G2, A2, B2) and (C3, D3, E3) respectively. Measures 72-73 have eighth notes (G2, F2, E2) and (D2, C2, B1) respectively. Measures 74-75 have triplets of eighth notes (G2, A2, B2) and (C3, D3, E3) respectively.

76

Measures 76-80. Treble staff: Measures 76-80 have chords (G4, B4, D5), (C5, E5, G5), (F5, G5, A5), (G5, F5, E5), and (D5, C5, B4) respectively. Bass staff: Measures 76-80 have triplets of eighth notes (G2, A2, B2), (C3, D3, E3), (F3, G3, A3), (B3, C4, D4), and (E4, F4, G4) respectively.

81

Measures 81-86. Treble staff: Measures 81-86 have chords (G4, B4, D5), (C5, E5, G5), (F5, G5, A5), (G5, F5, E5), (D5, C5, B4), and (C5, E5, G5) respectively. Bass staff: Measures 81-86 have eighth notes (G2, F2, E2), (D2, C2, B1), (A1, G1, F1), (G2, F2, E2), (D2, C2, B1), and (A1, G1, F1) respectively.

90

Measures 90-95. Treble staff: Measures 90-95 have chords (G4, B4, D5), (C5, E5, G5), (F5, G5, A5), (G5, F5, E5), (D5, C5, B4), and (C5, E5, G5) respectively. Bass staff: Measures 90-95 have eighth notes (G2, F2, E2), (D2, C2, B1), (A1, G1, F1), (G2, F2, E2), (D2, C2, B1), and (A1, G1, F1) respectively.