

Vidala

(2016)

Matias Jascalevich

$\text{♩} = 56$

Violin I
Violin II
Viola
Violoncello
Contrabajo

Detailed description: This block contains the first seven measures of the score. The music is in 3/4 time with a key signature of one sharp (F#). The tempo is marked as quarter note = 56. The Violin I and II parts play a rhythmic melody of eighth and quarter notes. The Viola part provides harmonic support with a mix of eighth and quarter notes. The Violoncello part plays a steady bass line. The Contrabajo part is silent throughout these measures.

8

A

Detailed description: This block contains measures 8 through 14, marked with a box 'A'. The Violin I and II parts continue their melodic lines. The Viola part has a more active role with eighth and quarter notes. The Violoncello part continues its bass line. The Contrabajo part enters in measure 8 with a bass line consisting of quarter and eighth notes.

B

17

Musical score for section B, measures 17-27. The score is written for five staves: two treble clefs (top two staves) and three bass clefs (bottom three staves). The key signature is one sharp (F#). The music consists of a series of chords and melodic lines. Measures 17-20 show a sequence of chords in the right hand and bass lines in the left hand. Measures 21-27 continue this pattern with some melodic movement in the upper staves.

C

28

Musical score for section C, measures 28-37. The score is written for five staves: two treble clefs (top two staves) and three bass clefs (bottom three staves). The key signature is one sharp (F#). Measures 28-31 show a sequence of chords in the right hand and bass lines in the left hand. Measures 32-37 continue this pattern with some melodic movement in the upper staves.

Vidala

Violin I

(2016)

Matias Jascalevich

$\text{♩} = 56$

9 **A**

17 **B**

26 **C** 5

Vidala

Violin II

(2016)

Matias Jascavevich

$\text{♩} = 56$

9 **A**

17 **B**

26 **C**

32

Vidala

Viola

(2016)

Matias Jascalevich

$\text{♩} = 56$



8

A



17

B



26

C

4



Vidala

Violoncello

(2016)

Matias Jascalevich

$\text{♩} = 56$



9

A



17

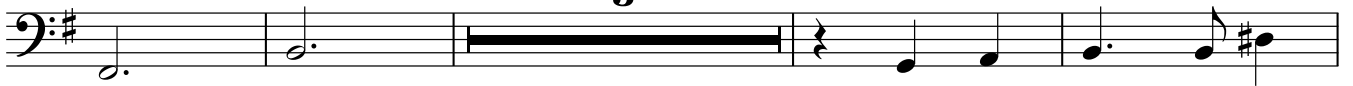
B



26

C

3



33



Vidala

(2016)

Contrabajo

Matias Jascalevich

♩=56 **10** **A**

17 **B**

26 **C** **3**

33