

VIOLA

TO THE MUSES

Brian Alan DeLaney
Text by William Blake

Moderate (♩ = 100)

First staff of music (measures 1-5). The key signature has two flats (B-flat and E-flat). The time signature is 4/4. The first measure is marked **mp**. The staff contains eighth and sixteenth notes with stems pointing down.

Second staff of music (measures 6-10). Continuation of the eighth and sixteenth note pattern with stems pointing down.

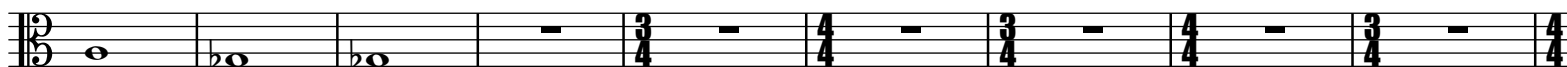
Third staff of music (measures 11-16). Measures 11-12 continue the eighth and sixteenth note pattern. Measures 13-16 feature a melodic line with a half note, a dotted half note, and a whole note, with a slur over the last two measures.

Fourth staff of music (measures 17-22). Measures 17-18 continue the melodic line from the previous staff. Measures 19-22 feature a rapid sixteenth-note arpeggiated pattern, marked **p**.

Fifth staff of music (measures 23-30). Measures 23-24 continue the melodic line. Measures 25-30 feature a melodic line with a half note, a dotted half note, and a whole note, with a slur over the last two measures, marked **mp**.

Sixth staff of music (measures 31-36). Measures 31-32 feature a rapid sixteenth-note arpeggiated pattern, marked **p**. Measures 33-36 feature a melodic line with a half note, a dotted half note, and a whole note, with a slur over the last two measures.

2
38



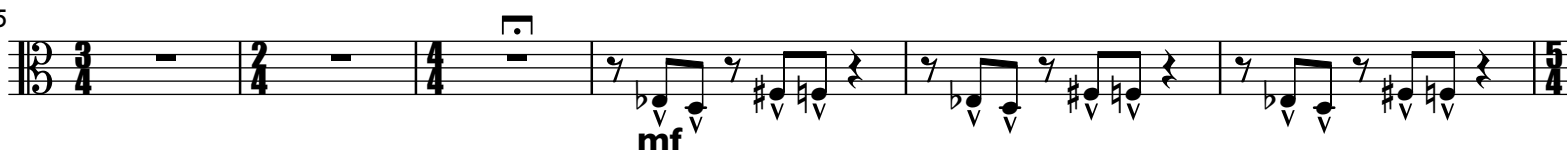
47



57



65



71



76



81

