

Pierre Prowo
(1697–1757)

Triosonate

c-Moll

für Blockflöte, Traversflöte
und Basso continuo

(D-SWI Mus.4323/3 und B-Bc 7049)

Partitur und Stimmen

Lebensdaten

Pierre Prowo, 1697 geboren in Hamburg-Altona, war Komponist und ab 1736 Organist an der reformierten Kirche zu Altona. Er starb am gleichen Ort 1757.

Anmerkungen

Derzeit sind zwei Quellen für die viersätzigige Triosonate bekannt: It. Répertoire International des Sources Musicales (RISM) einerseits autographe Einzelstimmen, die in der Musikaliensammlung der Landesbibliothek Mecklenburg-Vorpommern Günter Uecker in Schwerin aufbewahrt werden, andererseits eine Abschrift in Form von Einzelstimmen unter dem Namen *Schultze* aus der Bibliothek des Königlichen Konservatoriums in Brüssel. In beiden Quellen sind die Stimmen jeweils mit nur zwei Vorzeichen (b und es) und in folgenden Schlüsseln notiert: Blockflöte (G1), Traversflöte (G2), Basso continuo (F4). Für die vorliegende Edition wurden generell offensichtliche Fehler stillschweigend korrigiert, Artikulations- und Verzierungsangaben behutsam aus analogen Stellen übernommen und Generalbass-Bezifferungen korrigiert bzw. ergänzt. Beide Quellen sind sehr ähnlich, aber nicht identisch, so dass eine konsolidierte Fassung erstellt wurde, indem jeweils die nach Ansicht des Herausgebers musikalisch überzeugendsten Alternativen ausgewählt wurden. Ohne auf die Vielzahl an kleineren Abweichungen eingehen zu können, sei auf Folgendes hingewiesen:

- Viele Unterschiede finden sich in den Kadenzzen, jedoch war oft nur eine Variante brauchbar, um Stimmverdoppelungen in der Prim oder Melodieverläufe mit Sekundabständen in den Oberstimmen zu vermeiden.
- Traversflöte, 2. Satz *Allegro*, T. 31: In beiden Quellen steht punktierte Halbe es", was jedoch harmonisch nicht schlüssig ist, da in der ersten Takthälfte f-Moll (1. Achtel) und B-Dur-Septakkord (2. und 3. Achtel) erklingen. Eine Parallelstelle existiert nicht. In Analogie zum Verlauf der Bassstimme im unmittelbar vorhergehenden Takt wird stattdessen vorgeschlagen: Viertel as', Achtel Pause, Viertel g', Achtel Pause.

Quellen

D-SWI Mus.4323/3 aus der Musikaliensammlung der Landesbibliothek Mecklenburg-Vorpommern Günter Uecker, Schwerin:

Sonata 3 | Flaute a bec | Flaut Travers: | et | Basso Continuo | Dj P. Prowo

B-Bc 7049 aus der Bibliothek des Königlichen Konservatoriums, Brüssel:

Sonata | a 3 | Flauto Travers: | Flauto a bec | con | Basso | Del Sigr: Schultze

Bibliographische Nachweise:

<https://opac.rism.info/search?id=240003623>

<https://opac.rism.info/search?id=700001562>

Literatur

Mutschelknauss, Eduard: Artikel *Prowo, Pierre* in: MGG Online, hrsg. von Laurenz Lütteken, Kassel, Stuttgart, New York 2016ff., zuerst veröffentlicht 2005, online veröffentlicht 2016, <https://www.mgg-online.com/mgg/stable/27677> (beschränkter Zugriff)

Danksagung

Ich danke

Herrn Dr. Andreas Roloff, Schwerin, und Frau Ilse Beel, Brüssel, für die freundliche Kommunikation und die Zusendung der Editionsunterlagen,

Frau Anne-Kathrin Ludwig für das gemeinsame Musizieren und die fachkundige Durchsicht der Flötenstimmen.

Harald Schäfer, im Mai 2020

Kontakt: schafha [at] web.de

Weitere Editionen

<http://www.musanko.de>

<http://www.papierklaenge.de>

<http://www.fortunato-santini.de/>

Rechtlicher Hinweis

Alle mit den Editionsunterlagen dieser Ausgabe verbundenen Rechte liegen bei den Eigentümern der Quellen. Das in der Edition Harald Schäfer bereitgestellte Notenmaterial steht unter der Creative-Commons-Lizenz CC BY-SA (<https://creativecommons.org>) in der jeweils gültigen Fassung.

Trio sonate c-Moll

für Blockflöte, Traversflöte und Basso continuo

Pierre Prowo (1697–1757), D-SW1 Mus.4323/3/B-Bc 7049

Adagio

Blockflöte

Traversflöte

B. c.

2

6 4 5 6

3

6 7

4

6 7 6 6 5 4 3 6 4

6

6 6 5 4 7 5 7 3

Musical score system 8-9. It consists of three staves: Treble, Alto, and Bass. The key signature has two flats (B-flat and E-flat). The time signature is 4/4. The system contains two measures. Measure 8 starts with a treble clef, a key signature of two flats, and a 4/4 time signature. It features a melodic line with a trill (tr) on the first note, followed by eighth-note patterns. The bass line has a 4 and a 3 below it. Measure 9 continues the melodic line with trills and eighth notes. The bass line has a 6/4 and a 5/3 below it.

Musical score system 10-11. It consists of three staves: Treble, Alto, and Bass. The key signature has two flats. The system contains two measures. Measure 10 features a melodic line with trills (tr) and eighth notes. The bass line has a 6, a 7/3, and a 6/4 below it. Measure 11 continues with trills and eighth notes. The bass line has a 5/3, 6, 7, 6, and 4 below it.

Allegro

Musical score system 12-13. It consists of three staves: Treble, Alto, and Bass. The key signature has two flats. The time signature is 6/8. The system contains two measures. Measure 12 features a melodic line with a trill (tr) and eighth notes. The bass line has a 7/3 and a 6/4 below it. Measure 13 continues with trills and eighth notes. The bass line has a 5/3 and a 6/4 below it.

Musical score system 14-15. It consists of three staves: Treble, Alto, and Bass. The key signature has two flats. The time signature is 6/8. The system contains two measures. Measure 14 features a melodic line with eighth notes and rests. The bass line has a 6 and a 6 below it. Measure 15 continues with eighth notes and rests. The bass line has a 6 and a 6 below it.

Musical score system 16-17. It consists of three staves: Treble, Alto, and Bass. The key signature has two flats. The system contains two measures. Measure 16 features a melodic line with eighth notes and a trill (tr). The bass line has a 7/3, 6/4, 5/3, and 7 below it. Measure 17 continues with eighth notes and a trill. The bass line has a 7/3, 6/4, 5/3, 5/3, 6/4, 5/3, and a 5/3 below it.

11

6 — 7 6 6 5 — 6
6/3

14

6/3 6/5 6/5 7/5/3

17

5 7/5/3 7/4/3 6/4/3 6/4 6/5/3

20

6/4 6/5/3 7/5/3 6/4/3 6/5/3 6/4/3 7/5/3

24

6/4 6/4 6 6 6/4 6/5/3

28

6 7 43

31

7 6 6 6 6 6

34

7 6/5 7 6 7 43 43

38

6 7 7 5 6

41

6 6 4

44

6 6 6 6

47

6 6

50

6 7 6 5 6 6

54

6 7 6

57

4 6 6 6 5

Dolce

System 1 (measures 1-6):

- Measure 1: Treble clef, 3/8 time signature, notes G4, A4, B4.
- Measure 2: Treble clef, notes G4, F4, E4, D4.
- Measure 3: Treble clef, notes G4, F4, E4, D4.
- Measure 4: Treble clef, notes G4, F4, E4, D4.
- Measure 5: Treble clef, notes G4, F4, E4, D4.
- Measure 6: Treble clef, notes G4, F4, E4, D4.

Bass clef accompaniment:

- Measure 1: Bass clef, notes G3, A3, B3.
- Measure 2: Bass clef, notes G3, F3, E3, D3.
- Measure 3: Bass clef, notes G3, F3, E3, D3.
- Measure 4: Bass clef, notes G3, F3, E3, D3.
- Measure 5: Bass clef, notes G3, F3, E3, D3.
- Measure 6: Bass clef, notes G3, F3, E3, D3.

Chord symbols below bass line: 7₄₃, 7₄₃, $\flat 6$ ₄₃, 6, $\flat 6$ ₄₃, 6

System 2 (measures 7-12):

- Measure 7: Treble clef, notes G4, A4, B4, C5.
- Measure 8: Treble clef, notes G4, F4, E4, D4.
- Measure 9: Treble clef, notes G4, F4, E4, D4.
- Measure 10: Treble clef, notes G4, F4, E4, D4.
- Measure 11: Treble clef, notes G4, F4, E4, D4.
- Measure 12: Treble clef, notes G4, F4, E4, D4.

Bass clef accompaniment:

- Measure 7: Bass clef, notes G3, F3, E3, D3.
- Measure 8: Bass clef, notes G3, F3, E3, D3.
- Measure 9: Bass clef, notes G3, F3, E3, D3.
- Measure 10: Bass clef, notes G3, F3, E3, D3.
- Measure 11: Bass clef, notes G3, F3, E3, D3.
- Measure 12: Bass clef, notes G3, F3, E3, D3.

Chord symbols below bass line: $\flat 6$ ₄₃, 6, 4, 6, 5, 7₄₃, 6, 5₄₃

System 3 (measures 13-17):

- Measure 13: Treble clef, notes G4, A4, B4, C5.
- Measure 14: Treble clef, notes G4, F4, E4, D4.
- Measure 15: Treble clef, notes G4, F4, E4, D4.
- Measure 16: Treble clef, notes G4, F4, E4, D4.
- Measure 17: Treble clef, notes G4, F4, E4, D4.

Bass clef accompaniment:

- Measure 13: Bass clef, notes G3, F3, E3, D3.
- Measure 14: Bass clef, notes G3, F3, E3, D3.
- Measure 15: Bass clef, notes G3, F3, E3, D3.
- Measure 16: Bass clef, notes G3, F3, E3, D3.
- Measure 17: Bass clef, notes G3, F3, E3, D3.

Chord symbols below bass line: 7, 7, 6, 6, 6, 6

System 4 (measures 18-22):

- Measure 18: Treble clef, notes G4, A4, B4, C5.
- Measure 19: Treble clef, notes G4, F4, E4, D4.
- Measure 20: Treble clef, notes G4, F4, E4, D4.
- Measure 21: Treble clef, notes G4, F4, E4, D4.
- Measure 22: Treble clef, notes G4, F4, E4, D4.

Bass clef accompaniment:

- Measure 18: Bass clef, notes G3, F3, E3, D3.
- Measure 19: Bass clef, notes G3, F3, E3, D3.
- Measure 20: Bass clef, notes G3, F3, E3, D3.
- Measure 21: Bass clef, notes G3, F3, E3, D3.
- Measure 22: Bass clef, notes G3, F3, E3, D3.

Chord symbols below bass line: 5₃, 6₄, 7₃, 4, 7₃, 6, $\flat 5$ ₃₂, 6, $\flat 6$ ₄₃, 6

System 5 (measures 23-27):

- Measure 23: Treble clef, notes G4, A4, B4, C5.
- Measure 24: Treble clef, notes G4, F4, E4, D4.
- Measure 25: Treble clef, notes G4, F4, E4, D4.
- Measure 26: Treble clef, notes G4, F4, E4, D4.
- Measure 27: Treble clef, notes G4, F4, E4, D4.

Bass clef accompaniment:

- Measure 23: Bass clef, notes G3, F3, E3, D3.
- Measure 24: Bass clef, notes G3, F3, E3, D3.
- Measure 25: Bass clef, notes G3, F3, E3, D3.
- Measure 26: Bass clef, notes G3, F3, E3, D3.
- Measure 27: Bass clef, notes G3, F3, E3, D3.

Chord symbols below bass line: $\flat 5$ ₃, 6, $\flat 6$ ₄₃, 6, $\flat 4$ ₂, 6, 7₄₃, 7₄₃

Allegro

System 1: Treble clef, bass clef, 2/4 time signature. The music begins with a series of rests in the treble and bass staves, followed by a melodic line in the middle staff.

System 2: Treble clef, bass clef, 2/4 time signature. The music continues with a melodic line in the treble staff and a bass line in the bass staff. A trill (tr) is marked above a note in the treble staff.

System 3: Treble clef, bass clef, 2/4 time signature. The music continues with a melodic line in the treble staff and a bass line in the bass staff. A trill (tr) is marked above a note in the treble staff. Below the system, the following time signatures are indicated: 6/4, 6/4, 6/4, 6/4.

System 4: Treble clef, bass clef, 2/4 time signature. The music continues with a melodic line in the treble staff and a bass line in the bass staff. A trill (tr) is marked above a note in the treble staff. Below the system, the following time signatures are indicated: 6/4, 6/4, 6/4, 6/4, 6/4.

System 5: Treble clef, bass clef, 2/4 time signature. The music continues with a melodic line in the treble staff and a bass line in the bass staff. A trill (tr) is marked above a note in the treble staff. Below the system, the following time signatures are indicated: 6/4, 6/4, 6/4, 6/4, 7/4, 7/4.

26

7 6 6 6 5 6

31

6 6 6 7 5 3 6 3

36

6 4 3 6 6 6 7 5 3

41

6 6 6 4 5 3 6 6

46

6 5 7 3 6 6 6 6 6 6

74

6 5

78

6 5

83

6 5 7 6 5 6 4 7 6 7 6 4 7 6 7

88

6 4 5 6 5 7 6 6 5 3

93

7 5 #3 4 2 6 6 5

98

7 $\frac{7}{4}$ 7 $\frac{7}{4}$ 7 $\frac{7}{4}$ 6 $\frac{6}{4}$ 6 $\frac{6}{4}$

103

6 $\frac{6}{4}$ 5 $\frac{5}{4}$ 6 $\frac{6}{4}$ 5 $\frac{5}{4}$ 6 $\frac{6}{4}$ 5 $\frac{5}{4}$

107

6 $\frac{6}{4}$ 7 $\frac{7}{4}$ 6 $\frac{6}{4}$ 5 $\frac{5}{4}$ 6 $\frac{6}{4}$ 5 $\frac{5}{4}$

112

7 $\frac{7}{4}$ 7 $\frac{7}{4}$ 6 $\frac{6}{4}$ 6 $\frac{6}{4}$ 7 $\frac{7}{4}$

116

6 $\frac{6}{4}$ 5 $\frac{5}{4}$ 7 $\frac{7}{4}$ 6 $\frac{6}{4}$ 6 $\frac{6}{4}$ 5 $\frac{5}{4}$

Triosonate c-Moll

für Blockflöte, Traversflöte und Basso continuo

Blockflöte

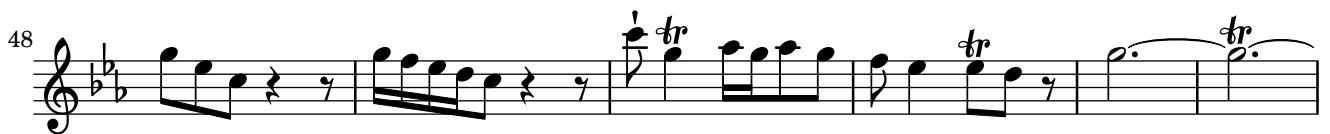
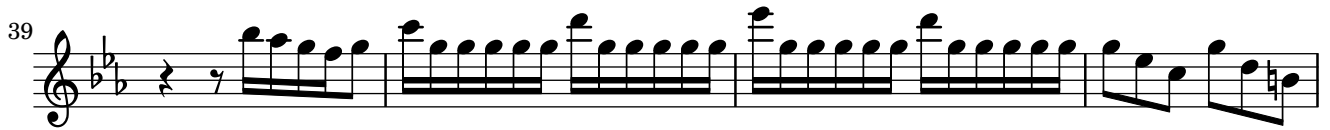
Pierre Prowo (1697–1757), D-SW1 Mus.4323/3/B-Bc 7049

Adagio

Musical score for Blockflöte, Adagio section, measures 1-11. The score is written in C minor (three flats) and common time (C). It features a series of eighth-note patterns with slurs and trills (tr). Measure numbers 3, 5, 7, 9, and 11 are indicated at the start of their respective staves.

Allegro

Musical score for Blockflöte, Allegro section, measures 12-19. The score is written in C minor (three flats) and 6/8 time. It features a series of eighth-note patterns with slurs and trills (tr). Measure numbers 6, 10, 15, and 19 are indicated at the start of their respective staves. The section concludes with a first and second ending (1. and 2.) at measure 19.

**Dolce**

Allegro

6

11

18 *tr*

25 2

32

36

40 *tr*

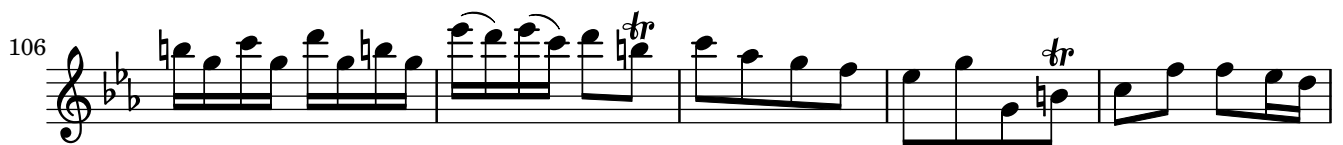
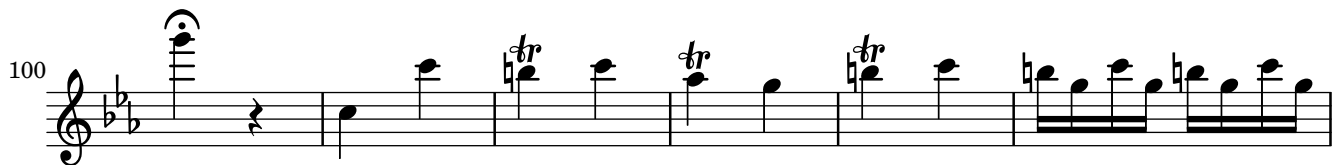
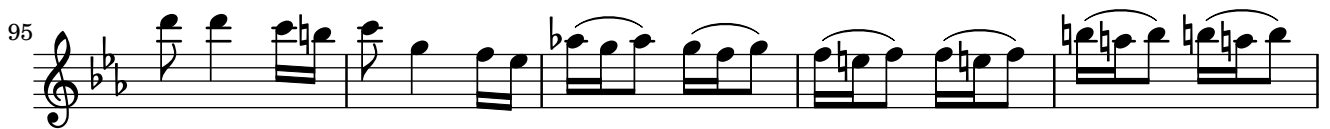
46 *tr*

52

56

61

66 *tr* 3



Triosonate c-Moll

für Blockflöte, Traversflöte und Basso continuo

Traversflöte

Pierre Prowo (1697–1757), D-SW1 Mus.4323/3/B-Bc 7049

Adagio

Musical score for Traversflöte, Adagio section, measures 1-11. The score is written in C minor, common time (C). It features a series of eighth-note patterns with slurs and trills. Measure 11 ends with a double bar line.

Allegro

Musical score for Traversflöte, Allegro section, measures 12-19. The score is written in C minor, 6/8 time. It features a series of eighth-note patterns with slurs and trills. Measure 19 ends with a double bar line and a first/second ending bracket.

**Dolce**

Allegro

6

12

18

23

28

36

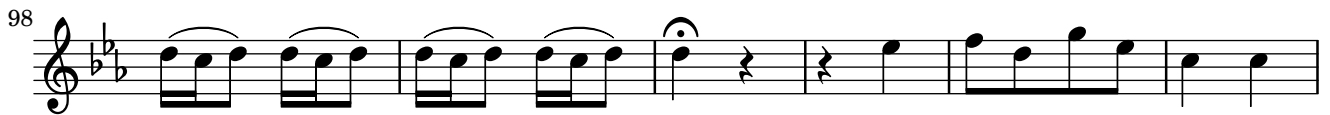
42

47

53

59

63



Triosonate c-Moll

für Blockflöte, Traversflöte und Basso continuo

Basso continuo

Pierre Prowo (1697–1757), D-SW1 Mus.4323/3/B-Bc 7049

Adagio

6 5 6 6 7 6 7

6 6 5 6 6 6 — 5 7 7 4

6 6 5 6 6 6 — 5 7 7 4

6 4 5 6 7 6 5 6 7 — 6

Allegro

7 6 5 6 6

6 6 7 3 6 5 7 7 6 5

5 6 5 — 5 6 7 6 6 — 6

6 6 6 7 5 7 7 6 5

6 6 6 7 5 7 7 6 5

6 — 5 6 — 5 7 6 6 5 — 6

6 6 6 7 5 7 7 6 5

6 — 5 6 — 5 7 6 6 5 — 6

6 5 6 6 6 5 6

7 — 7 6 6 6

33

6 6 7 6/5 7 6/5 7/3

37

7/3 6/5 7 7 6/5/3 6

41

6 6 4 6

45

6/6 6 6 6 6

48

6 7/3 6/4 5/3

52

6 6 6 7/3 6 4

56

4/2 6 6 6/4 5/3

Dolce

7/3 7/3 6/4 6/4 6 6/4 6 6/5

11

7/3 6/4 5/3 7 7 6 6 6/5 5/3 6/4 7/3 4/3

20

6 6/5 3/2 6/4 6 6/5 6/4 6 6/4 6 7/3 7/3

Allegro
12

— 6 4 — 6 6 — 6 — 6 — 6 4 — 6 — 6 4 —

19 — 6 6 — 6 4 3 — 6 3 — 6 4 3 — 6 3 — 7 — 7 — 7 —

27 6 — 6 6 5 — 6 6 — 6 6 — 6 7 — 6 5 3 —

35 6 — 6 4 3 — 6 — 6 — 6 7 5 3 — 6 6 — 6 6 — 6 5 4 3 —

43 6 3 — 6 — 6 — 6 7 5 3 — 6 4 — 6 — 6 — 6 —

50 6 — 6 4 2 — 6 6 7 5 3 — — — 6 6 7 5 3 —

58 6 6 7 5 — — — 6 6 7 5 — 6 — 6 7 — 6 — 7 — 6 5 —

67 — 6 6 7 — 6 6 5 4 3 — 6 7 — 6 6 — 6 7 5 3 —

75 6 5 — 6 6 5 — 6 6 4 3 — 6 5 — — —

83 6 7 5 3 — 6 5 — — — 6 7 4 3 — 6 7 5 3 — 6 4 7 5 3 — 6 7 5 3 — 6 5 4 3 — 6 7 5 3 —

91

6 6 5 3 7 5 3 4 2 6 6 5 7 3

99

7 3 7 3 6 4 6 6 6 6 6 6

105

5 6 5 6 5 6 5 6 6 6 6 7 5 6 5 7

113

7 4 2 6 6 7 6 6 5 7 6 6 5