

Alto I

I Sonate

$\text{♩} = 90$

Presto con brio

p *f*

7

12

17

22 *p* *sfz*

27 *f* *p*

33 *sfz* *f*

38

45 *f*

51

Alto Flute

57 *p* *sfz* *sfz* *sfz*

63 *sfz* *f*

69 *p*

76 *f*

82

87

91

96 *p* *sfz*

101 *f* *p*

107 *sfz* *f*

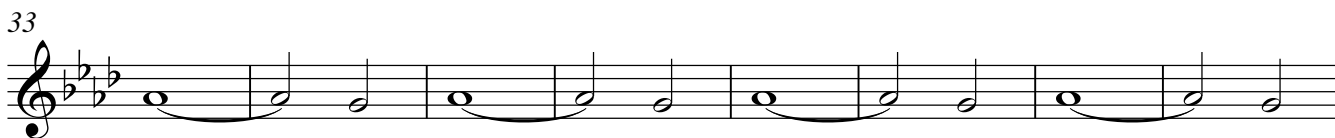
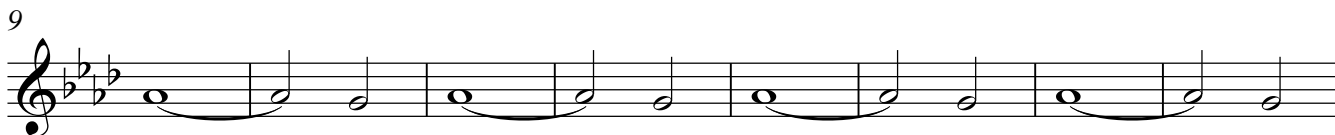
112 *p*

Alto I

II. Chaconna

$\text{♩} = 40$

Andante amoroso



Alto I

III Rondo

$\text{♩} = 90$

Presto con fuoco

1 *f* *tr* *tr*

5 *tr*

11 *tr*

15 *tr* *tr* 5 *p*

24 2 *f*

29 *tr* *tr* *tr*

33 *p*

38

42

47

51

61

65

69

74

77