

# Melodies from "FAUST"

Cornet in B $\flat$

GOUNOD  
Arranged by  
CHARLES WOODHOUSE

**VALE**

*mf*

1 2 16 ① *p* *cresc.*

1

**CHORALE**

*Clt. p*

② *f*

3 3

**SOLDIERS CHORUS**

*mf*

③ *f*

# Melodies from "FAUST"

2nd Cornet in B $\flat$

GOUNOD  
Arranged by  
CHARLES WOODHOUSE

VALSE

*mf*

1 2 1 2 3

2nd Horn *pp*

4 5 6 7 8 1 2 3 4 5 6

1st Horn *p*

7 8 ① 2 3 4 5 6 7

8 9 10 11 12 13 14

Horn

Detailed description: This section contains the Valse. It starts with a treble clef and a 3/4 time signature. The first staff is the 2nd Cornet part, marked *mf*. The second staff is the 2nd Horn part, marked *pp*, with first and second endings. The third staff is the 1st Horn part, marked *p*. The fourth staff continues the 1st Horn part with a circled first ending. The fifth staff continues the 1st Horn part. The sixth staff continues the 1st Horn part. The section ends with a 4/4 time signature.

CHORALE

*p*

②

Detailed description: This section contains the Chorale. It starts with a treble clef and a 4/4 time signature. The first staff is marked *p*. The second staff continues the melody. The section ends with a 6/8 time signature. A circled '2' is placed at the end of the first staff.

SOLDIERS CHORUS

*mf*

③

Detailed description: This section contains the Soldiers Chorus. It starts with a treble clef and a 6/8 time signature. The first staff is marked *mf*. The second staff continues the melody with a circled '3'. The third staff continues the melody. The fourth staff continues the melody. The section ends with a double bar line.

**HSS**

No. 27

# Melodies from "FAUST"

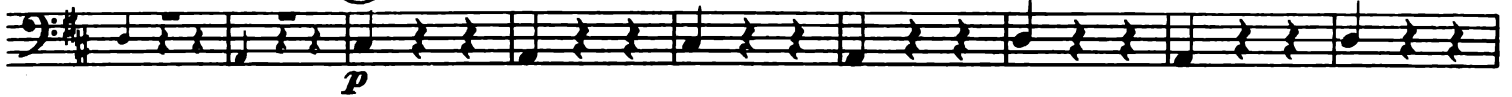
Trombone

GOUNOD  
Arranged by  
CHARLES WOODHOUSE

## VALSE



①



## CHORALE



## SOLDIERS CHORUS



③

