

Violoncello

# Sinfonia N°2

ca. 1757-1761

arr. N. P. Thomas  
chamber orchestra  
rev.02

Joseph Haydn

## I. Allegro $\text{♩} = 100$

7

*f*

7

13

20 **A**

*p* *f*

27

34 **B**

39 **C** 12

Violoncello

54 **D**



*f*

60



*f*

67 **E**



74



80 **F**




*p* *pp*

87



93 **G**



*f*


100



106 **H**




112



*pp*

118 **I**



Violoncello

124



129



134

J



141



148

K



155

L

12

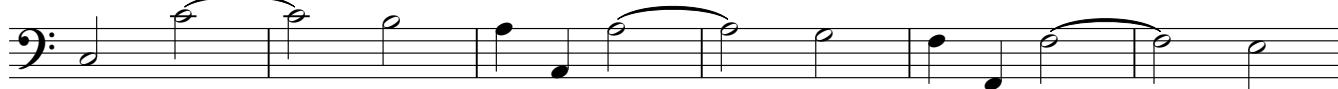
M



172



178



184

N



189



# II

Andante ♩=60

Violoncello

*sempre p*

8

17 **A**

27 **B**

34

42 **C**

51 **D**

58

66 **E**

73

Violoncello

### III. Finale

Presto ♩=88

*f*

10

21 **A** obl *p* **11**

36 **B** *f*

46

57 **C** **10**

67 **D** fl2 **8**

79 **E** obl **9**

Violoncello

92 **F**

*f*

104 **G**

*p*

116 **H**

*f*

128 **I**

*pp*

139 **J**

151 **K**

162

*f*

173 **L**

*f*

183

194 **M** **15** **N**

*f*

218

225