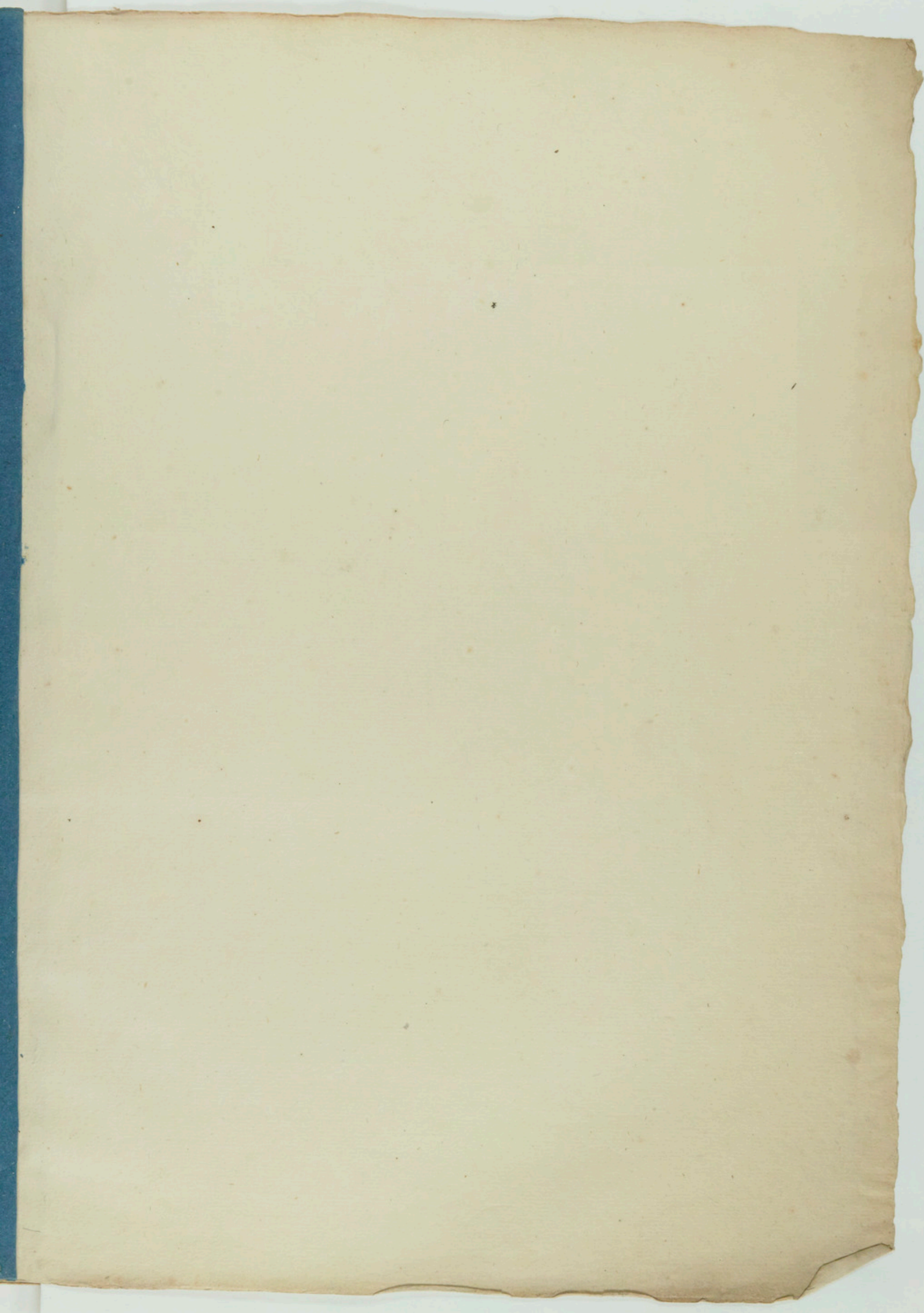
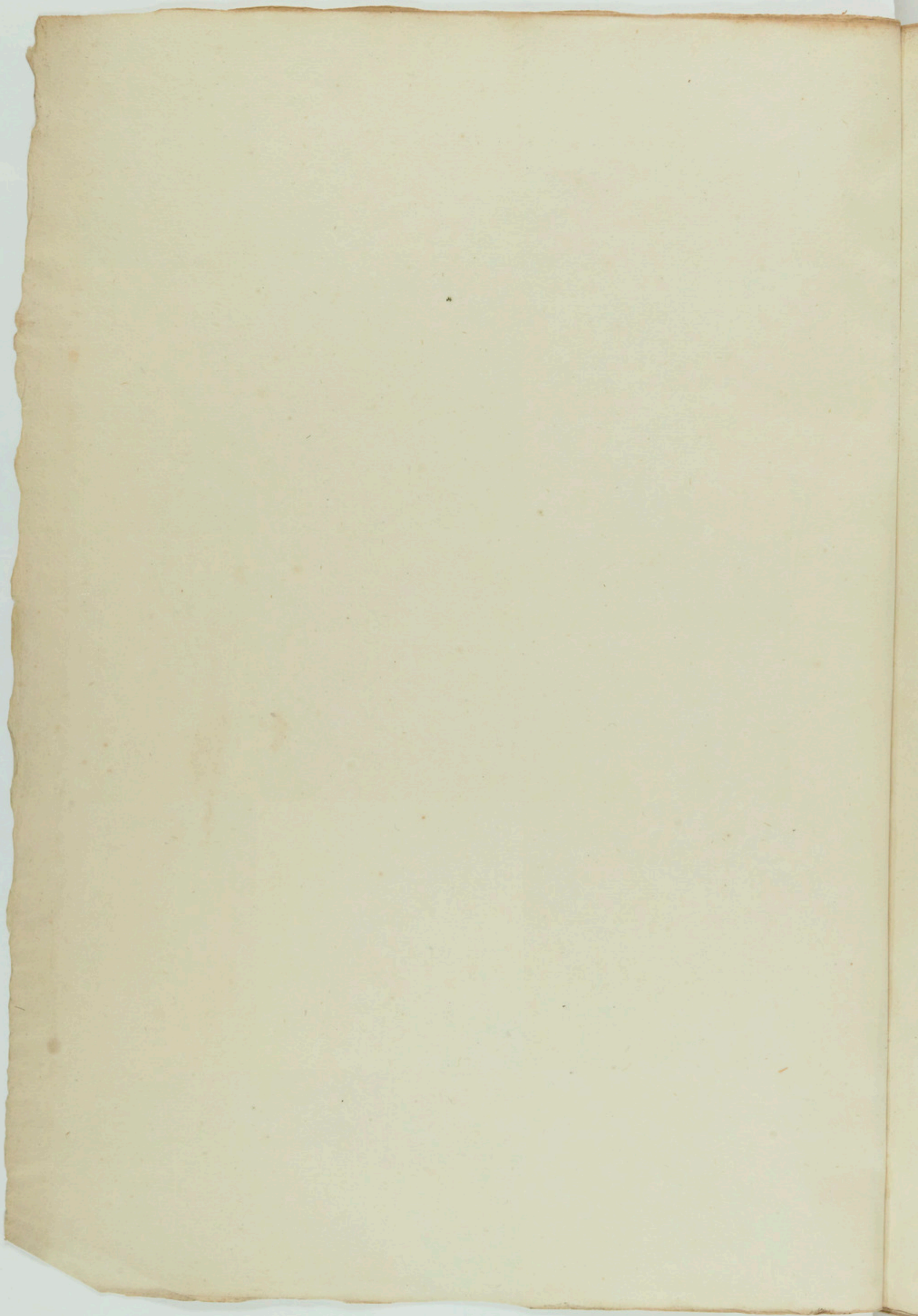


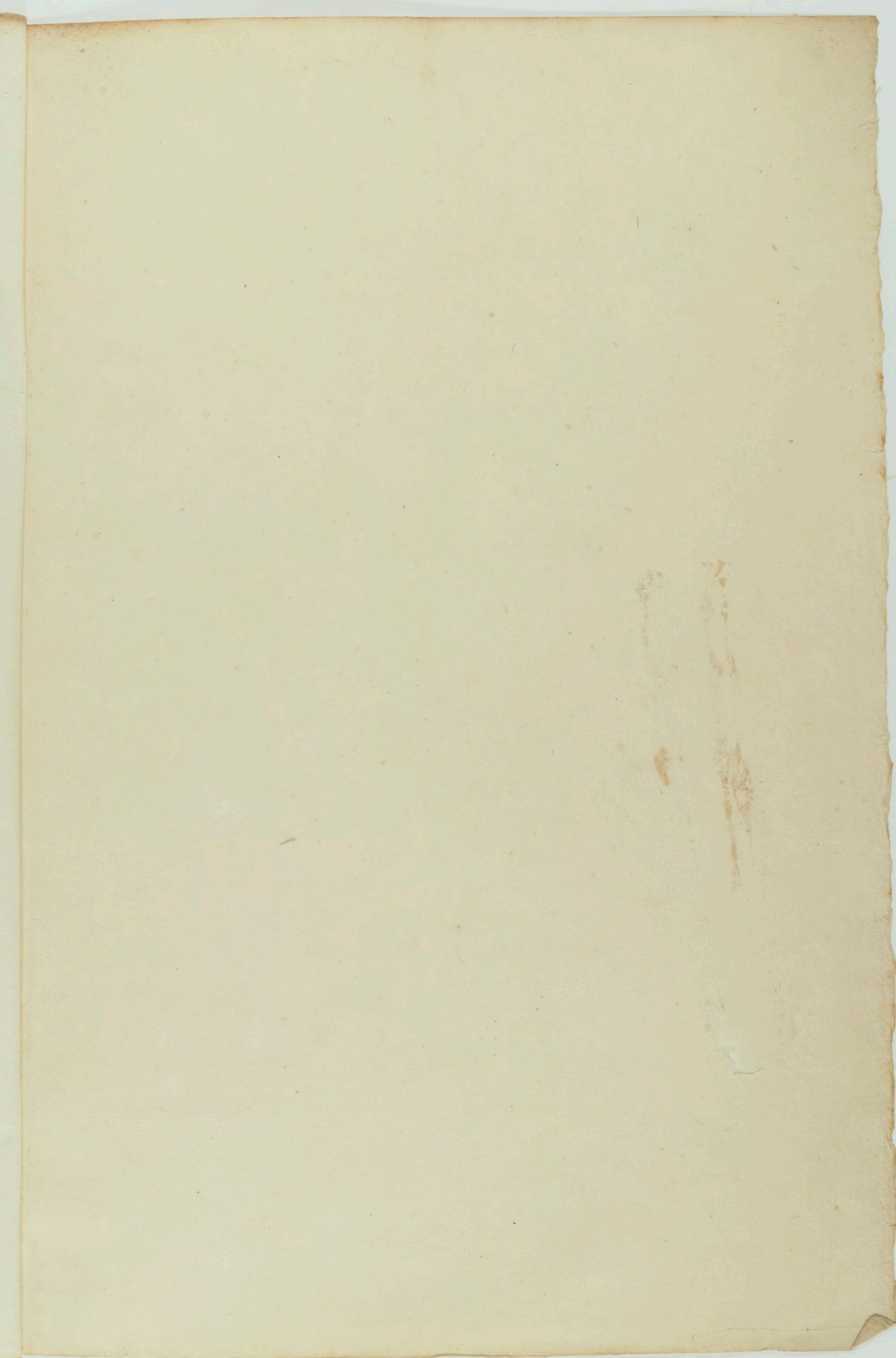
CL. 916. D. 5.

Messes

E. O. Frank.







Kyrie.

Andantino

Soprano. Tenor. Basse. C. Basse.

Orgue

Dolce

Dimin

Ky - ri - e e -

le - i - son Ky - ri - e e - le - i - son Ky - ri - e e - le - i - son



Dolce

Dolce Ky - ri - e - e - le - i - son
 Ky - ri - e - e - le - i - son Ky - ri - e Ky - ri - e - - - le - i - son Ky - ri - e e - le - i - son
Dolce Ky - ri - e e - le - i - son
Dolce Ky - ri - e e - le - i - son

crec.

Ky - ri - e e - le - i - son Ky - ri - e e - le - i - son Ky - ri - e e - le - i - son Ky - ri - e
 Ky - ri - e e - le - i - son Ky - ri - e e - le - i - son Ky - ri - e e - le - i - son Ky - ri - e
 Ky - ri - e e - le - i - son Ky - ri - e e - le - i - son Ky - ri - e e - le - i - son Ky - ri - e
 Ky - ri - e e - le - i - son Ky - ri - e e - le - i - son Ky - ri - e e - le - i - son Ky - ri - e

p Ky - ri - e e - - - le - i - son *f* Chris - te Chris - te e - le - i - son
 e - - - i - son *f* Chris - te Chris - te e - le - i - son *f* Chris - te
 e - le - i - son *f* Chris - te Chris - te e - le - i - son *f* Chris - te

espress

Christe eleison Christe eleison
 Christe eleison Christe eleison
 Christe eleison Christe eleison

mf.

Christe eleison Christe eleison
 Christe eleison Christe eleison
 Christe eleison Christe eleison

mf.

Christe eleison Christe eleison
 Christe eleison Christe eleison
 Christe eleison Christe eleison

Chris - te - le - i - son

Chris - te - le - i - son *meno f* *cantando* *molto Dimin.* *ppp* Chris - te

Chris - te Chris - te Chris - te - le - i - son

molto Dimin

Dolce

- le - i - son

Chris - te - le - i - son

le - i - son

Chris - te - le - i - son

- le - i - son

Chris - te - le - i - son

Dolce

c - lei

Dolcissimo

ky - ri - e e - le - i - son ky - ri - e e - le - i - son ky - ri - e

- son *Dolcissimo* e - - - le - i - son

Dolce

Handwritten musical score for the first system. It consists of five staves. The top two staves are vocal parts with lyrics: "le-i-son ky-ri-e - le-i-son ky-ri-e ky-ri-e - - - le-i-son ky-ri-". The bottom three staves are piano accompaniment. The key signature is G major (one sharp) and the time signature is common time (C). The tempo/mood is marked "Dolce".

Handwritten musical score for the second system. It consists of five staves. The top two staves are vocal parts with lyrics: "e - - e - le-i-son ky-ri-e e - le-i-son e - - - le-i-son ky-ri-e e - le-i-son ky-ri-e e - le-i-son e - - - le-i-son". The bottom three staves are piano accompaniment. The key signature is G major and the time signature is common time. The tempo/mood is marked "Dolce".

Handwritten musical score for the third system. It consists of five staves. The top two staves are vocal parts with lyrics: "Son ky-ri-e ky-ri-e - - - le-i-son ky-ri-e". The bottom three staves are piano accompaniment. The key signature is G major and the time signature is common time. The tempo/mood is marked "Dolce".

Dimin *p*

Musical score system 1. It consists of five staves. The top two staves are vocal parts with lyrics: "Ky-ri-e e-le-i-son" (top) and "Ky-ri-e e-le-i-son" (middle). The bottom three staves are piano accompaniment. The key signature has three sharps (F#, C#, G#). The tempo/mood is marked "Dimin" and "p".

Dolce

Musical score system 2. It consists of five staves. The top two staves are vocal parts with lyrics: "-son" (top) and "Ky-ri-e e-le-i-son" (middle). The bottom three staves are piano accompaniment. The key signature has three sharps. The tempo/mood is marked "Dolce".

Musical score system 3. It consists of five staves. The top two staves are vocal parts with lyrics: "-le-i-son" (top) and "-le-i-son" (middle). The bottom three staves are piano accompaniment. The key signature has three sharps. The system ends with a double bar line.

Gloria.

Molto

Soprano: *Gl - o - ri - a*
 Tenor: *Gl - o - ri - a*
 Bass: *Gl - o - ri - a*
 Violoncelle: *in ex celsis*
 C. Basse: *in ex celsis*

Harpe: *in ex celsis*
 Orgue: *in ex celsis*

in ex celsis De - o
in ex celsis De - o
De - o
in ex celsis De - o
De - o

Gl - o - ri - a
Gl - o - ri - a

Handwritten musical score for the first system. It consists of six staves. The top four staves are vocal parts: Soprano (S), Alto (A), Tenor (T), and Bass (B). The bottom two staves are piano accompaniment (P). The key signature is one sharp (F#) and the time signature is common time (C). The lyrics are: "in excelsis De-o Glo-ri-a in excelsis De-o Glo-ri-a". The piano part features a rhythmic accompaniment with chords and some melodic lines.

Handwritten musical score for the second system, continuing from the first. It also consists of six staves with the same vocal and piano parts. The lyrics are: "pa-tri et in-ter-rae pa-tri bo-ni-um bo-nae vo-lun-tatis". The piano accompaniment continues with similar rhythmic patterns and chordal textures.

Handwritten musical score for the first system. It consists of five staves. The top two staves are vocal parts with lyrics: "a - - do - ramus te glo - ri - fi - camus te laudamus te lau - damus te laudamus te". The third staff is a piano accompaniment with lyrics: "-amus te be - ne - - - di - ci - - - mus te". The bottom two staves are piano accompaniment with notes and rests.

Handwritten musical score for the second system. It consists of five staves. The top two staves are vocal parts with lyrics: "gra - ti - al a - gi - mus ti - bi prop - ter magnam glori". The third staff is a piano accompaniment with lyrics: "gra - ti - al a - gi - mus ti - bi prop - ter magnam glori". The bottom two staves are piano accompaniment with notes and rests. The word "sempre" is written in the piano part.

Handwritten musical score for the first system. It consists of two vocal staves (Soprano and Alto) and piano accompaniment for the right and left hands. The key signature is two sharps (F# and C#), and the time signature is 9/8. The lyrics are:
 - am tu - - am Do - mi - ne De - us rex cae - lestis
 - am tu - - - am. Do - mi - ne De - us rex cae - lestis
 lau - - - damus te

Handwritten musical score for the second system. It continues the vocal and piano parts from the first system. The lyrics are:
 De - us pa - ter om - ni - po - tens
 De - us pa - ter om - ni - po - tens be - ne - di
 be - ne - di - ci - mus te

Handwritten musical score for the first system. It consists of five staves. The top staff is a vocal line with lyrics: *-cimus te a - - do - ramus te*. The second staff is another vocal line with lyrics: *a - - do ramus te Do - mi - ne De - us Rex ca -*. The bottom three staves are piano accompaniment. The key signature is two sharps (F# and C#), and the time signature is common time (C). The music is written in a cursive, handwritten style.

Handwritten musical score for the second system. It consists of five staves. The top staff is a vocal line with lyrics: *-les - tu De - us pa - ter om - ni - po - tens Do - - - mi*. The second staff is another vocal line. The bottom three staves are piano accompaniment. The key signature is two sharps (F# and C#), and the time signature is common time (C). The music is written in a cursive, handwritten style. Dynamic markings include *meno forte* and *meno forte* in the piano part.

p *cres.* *A*

Do-- mi- ne fi- li- u- ni- ge- mi- te
 Do-- mi- ne fi- li- u- ni- ge- mi- te
 - ne fi- li- u- ni- ge- mi- te Do-- mi- ne fi- li- u- ni- ge- mi- te

pp

Je - su Chris - - - te Do - - mi - - ne De - -
 Je - su Chris - - - te Do - - mi - - ne De - -
 Je - su Chris - - - te Do - - mi - - ne De - -

pp

- ul ag - nus ve - i fi - li - us pa - - - tris
 - ul ag - nus De - i fi - li - us pa - - - tris
 - ul ag - nus De - i fi - li - us pa - - - tris

Larghetto

Handwritten musical score for the first system. It consists of six staves. The top two staves are for the vocal line, and the bottom four are for piano accompaniment. The key signature is three sharps (F#, C#, G#) and the time signature is 3/4. The tempo is marked 'Larghetto'. The first vocal staff has a 'Solo' marking and a 'cres' (crescendo) marking. The second vocal staff has a 'Molto cantabile' marking. The piano accompaniment includes dynamic markings such as 'pp' (pianissimo) and 'p' (piano).

Handwritten musical score for the second system. It consists of two staves. The top staff is the vocal line with lyrics: "Venero solo Dolce Qui tol-lis peccata mun-di". The bottom staff is the piano accompaniment. The key signature remains three sharps and the time signature is 3/4. The tempo is 'Larghetto'. The system includes dynamic markings like 'Dimin' (diminuendo) and 'Dolce'.

Handwritten musical score for the third system. It consists of two staves. The top staff is the vocal line with lyrics: "mi-se-re-re mi-se-re-re no-bis mi-se-re-re no-bis". The bottom staff is the piano accompaniment. The key signature remains three sharps and the time signature is 3/4. The tempo is 'Larghetto'. The system includes dynamic markings like 'pp' and 'p'.

Chœur
poco rall. *pp* *à tempo*
poco rall. *qui tol-lis pec-cata mun-di*
mi-se-re-re no-bis qui tol-lis pec-ca-ta
poco-rall *Tempo* *f* *Qui tol-lis*
poco rall *à tempo* *pp* *f*
pp
à tempo *pp*

cres *Dim*
mi-se-re-re no-bis mi-se-re-re no-bis mi-se-re-re no-bis
pec-ca-ta mun-di mi-se-re-re no-bis mi-se-re-re no-bis
pec-ca-ta mun-di mi-se-re-re no-bis mi-se-re-re no-bis
cres *Dim*
cres *Dim*

Tenor solo
Qui tol-lis pec-cata mun-di sus-ci-pe de-pre-ca-ti-onem nos-tram

Handwritten musical score for the first system, featuring vocal lines and piano accompaniment. The lyrics are: *Sus - - ci - pe*. The score includes dynamic markings such as *pp* and *cres*. The piano part features dense chordal textures and arpeggiated figures.

Handwritten musical score for the second system, continuing the vocal and piano parts. The lyrics include: *nos - - trum*, *de - - pre - ca ti - o - - nem*, and *- ca - ti - o - - nem sus - - ci - pe*. Dynamic markings include *cres*, *f*, and *pp*. The piano accompaniment continues with complex textures and arpeggios.

Handwritten musical score for voice and piano. The piece is in 9/8 time and begins with a key signature of one flat. The lyrics include: "pe", "nos - - - - -", "de - - - pre-ca-ti-o-nem", "mi-se-re-re", and "mi-se-re-re". Performance directions include "cres" (crescendo), "f" (forte), and "ppp" (pianississimo). A "Sola" section is indicated with a dynamic of "pp".

Continuation of the handwritten musical score. The lyrics include: "mi-se-re-re", "qui se-des ad", "mi-se-re-re", "qui se-des ad". Performance directions include "ppp", "pp", and "pp".



cres ----- *Molto cres*

De-ter-am ad De-ter-am De-ter-am pa-ter mi-se-

De-ter-am ad De-ter-am ad De-ter-am pa-ter mi-se-re-re no-bil

De-ter-am ad De-ter-am ad De-ter-am pa-ter mi-se-re-re

cres ----- *Molto cres*

re re-gni-se-re-re no-bil

mi-se-re-re no-bil mi-se-re-re no-bil

mi-se-re-re mi-se-re-re no-bil

Dim. molto rall ----- *à tempo*

Dim. molto rall ----- *à tempo*

seus harmoniques

Allegretto Composto

Quoni-am tu so-lus sanc-tus tu so-lus Do-mi-nus quoni-am tu solus

p

Sanctus tu so-lus al-tis-si-mus tu solus Sanctus tu so-lus Do-mi-nus

quoni-am tu solus sanc-tus tu
quoni-am tu so-lus sanc-tus
tu solus tu solus al-tis-si-mus tu solus

p

So - - lus sanc - tus sanc - - tus Solus al - tis - simus

So - - lus Do - minus tu solus sanc - tus al - testimus

quoniam tu solus sanc - tus tu so - lus sanctus

cres.

Je - su Chris - te cum sanc - to spi - ri - tu in glo - ri - a Dei

Je - su Chris - te cum sanc - to spi - ri - tu in glo - - ri - a Dei

tu solus sanctus tu solus sanctus tu solus tu solus tel - tis - si -

cresc.

Pa - tris quoniam tu solus sanc - tus tu so - - lus Do - mi - nus quoniam

Pa - tris quoniam tu solus sanc - tus tu so - lus Do - mi - nus quoniam

-mus *f.* quoniam tu so - - - lus sanc - - tus quoniam

tu solus sanctus tu solus altissimus Je su Chris te Cum sanc

tu solus sanc-tus tu so-lus al-tis-simus Je - su Chris -

tu solus sanc-tus tu solus al-tis-si-mus Je - - su Chris -

to spiri-tu in glo-ri-a Dei pa-tis in glo-ri-a

te Cum sanc-to spi-ri-tu in glo-ri-a

-te Cum sanc-to spi-ri-tu in glo-ri-a

Dei pa-tris in glo-ri-a Dei pa-tris

De-i pa-tris in glo-ri-a De-i pa-tris

De-i Pa-tris in glo-ri-a De-i pa-tris Cum sanc-to

Cum Sancto Spiritu in gloria Dei
 Spiritus in gloria Dei Patris cum Sancto Spiritu in gloria

Cum Sancto Spiritu in gloria
 Patris amen amen amen cum Sancto Spiritu in
 Dei amen amen amen amen

Dei Patris amen amen amen amen amen
 gloria Dei amen amen amen amen amen
 amen amen amen amen cum Sancto Spiritu

Handwritten musical score for a religious piece, likely a Mass. The score is written in G major (one sharp) and 4/4 time. It features multiple vocal parts (Soprano, Alto, Tenor, Bass) and piano accompaniment. The lyrics are Latin: "Amen amen in gloria Dei Patris amen amen".

The score is organized into systems, with each system containing several staves. The lyrics are written below the vocal staves. Key musical notations include:

- Dynamic markings: *mf* (mezzo-forte), *ff* (fortissimo), *ffo* (forzando), *res* (ritardando).
- Tempo/Performance markings: *Alleg.* (Allegretto), *rit.* (ritardando).
- Rehearsal marks: *ff* (forzando).
- Phrasing: Slurs and breath marks (triple dots) are used to indicate phrasing in the vocal lines.

The lyrics are:
Amen amen
a - men a - men a - men a - men a - men a - - - -
Spi-ri-tu in glo-ri-a De-i Pa-tris amen amen a - - - -
a - men a - men a - - - - - men a - - - - - men a - - - -
- men amen amen amen a - - - - - men amen a - - - - - men a - -
- men amen amen amen amen a - men amen a - men amen
- men
Glo-ri-a
may Glo-ri-a in ex-cel-sis

Handwritten musical score for the first system. It consists of five staves. The top two staves are vocal parts with lyrics: "in ex-cel-sis De-o" and "in ex-cel-sis De-o". The third staff is a piano accompaniment with lyrics: "De-o" and "A glo-ria in ex-cel-sis". The bottom two staves are piano accompaniment with various musical notations including slurs and dynamics.

Handwritten musical score for the second system. It consists of five staves. The top two staves are vocal parts with lyrics: "Glo-ri-a" and "in ex-cel-sis". The third staff is a piano accompaniment with lyrics: "Glo-ri-a" and "Glo-ri-a". The bottom two staves are piano accompaniment with various musical notations including slurs and dynamics.

De --- o Glo-ria in ex-cel-sis
in ex-cel-sis De --- o Glo-ri-a

The first system of the manuscript contains four staves. The top two staves are vocal parts with lyrics. The bottom two staves are piano accompaniment. The key signature is one sharp (F#) and the time signature is common time (C). The lyrics are: "De --- o Glo-ria in ex-cel-sis" on the first line and "in ex-cel-sis De --- o Glo-ri-a" on the second line. The piano part features a rhythmic accompaniment with chords and moving lines.

glo-ri-a in ex-cel-sis
glo-ri-a in ex-cel-sis in ex-cel-sis
in ex-cel-sis De --- o in ex-cel-sis

The second system continues the musical piece with four staves. The vocal parts have lyrics: "glo-ri-a in ex-cel-sis" on the first line, "glo-ri-a in ex-cel-sis in ex-cel-sis" on the second line, and "in ex-cel-sis De --- o in ex-cel-sis" on the third line. The piano accompaniment continues with similar rhythmic patterns and chordal textures.



glo-ri-a glo-ri-a quoniam tu solus sanc-tus tu so-lus
 glo-ri-a glo-ri-a quoniam tu solus sanc-tus tu so-lus
 glo-ri-a glo-ri-a quoniam tu so-lus sanc-

Do-minus quo-niam tu solus sanc-tus tu so-lus al-tis-simus Jesu
 Do-minus quo-niam tu so-lus sanc-tus tu so-lus al-tis-simus Jesu
 -tus quoniam tu solus sanc-tus tu solus al-tis-simus tu solus

Chris-te cum sanc-to Spi-ri-tu in glo-ri-a dei pa-tris quoniam
 Chris-te cum sanc-to Spi-ri-tu in glo-ri-a dei pa-tris quoniam
 sanctus tu solus Dominus tu solus tu solus al-tis-si-mus quoniam

rit.

tu solus Sanctus tu so-lus Do-mi-nus quoniam tu solus Sanctus tu
 tu solus sanctus tu so-lus Do-mi-nus quoniam tu solus Sanctus tu
 tu solus sanc-tus tu so-lus Do-mi-nus quoniam tu solus Sanctus tu.

solus al-tis-si-mus a - - men a - - men a - men a - men a - men
 so-lus al-tis-si-mus a - - men a - - men a - men a - men a - men
 so-lus al-tis-si-mus a - men a - - men a - - men a - -

a - men a - - - - men amen amen a - - men
 a - men a - - - - men amen amen a - - men
 - men a - - - - men amen amen a - - men



Sanctus.

Alto maestro quasi Sento.

Handwritten musical score for the first system, including staves for strings and woodwinds. The woodwind part is marked *Legatissimo*. The string parts are marked *mf* and *Sanctus*.

Handwritten musical score for the second system, including staves for strings and woodwinds. The woodwind part is marked *mf* and *Sanctus*.

Vocal and piano accompaniment for the third system. The vocal line includes the lyrics: *Sanc-tus Do-mi-nus Sanc-tus Do-mi-nus Ple-ni sunt cae-li et*. The piano accompaniment is marked *cres.* and *pp*.

ter-ra Glo-ri-a tu-a ple-ni sunt ca-li et ter-ra
 ter-ra Glo-ri-a tu-a ple-ni sunt ca-li et ter-ra
 ter-ra Glo-ri-a tu-a ple-ni sunt ca-li et ter-ra

sempre
 glo-ri-a tu-a Ple-ni sunt ca-li Ce-li et ter-ra
 glo-ri-a tu-a Ple-ni sunt ca-li Ce-li et ter-ra
 glo-ri-a tu-a Ple-ni sunt ca-li Ce-li et ter-ra

sempre

Glo-ri-a glo-ri-a tu-a
 Glo-ri-a glo-ri-a tu-a
 glo-ri-a glo-ri-a tu-a Ho-san-na in ex-cel-sis Ho-

f. p.

A

Handwritten musical score for the first system. It consists of four staves: two vocal staves (Soprano and Alto) and two piano accompaniment staves. The key signature has two sharps (F# and C#). The lyrics for the vocal parts are:

Soprano: Ho - san - na ho - san - na ho -

Alto: Ho - san - na in ex - cel - sis ho - san - na ho - san - na ho -

Piano: - san - na in ex - cel - sis Ho - san - na in ex - cel - sis Ho - san - na ho - san - na ho -

Handwritten musical score for the second system, continuing the vocal and piano parts. The lyrics for the vocal parts are:

Soprano: - san - na Ho - san - na ho - san - na ho - san - na Ho - san - na Ho - san - na ho -

Alto: - san - na Ho - san - na ho - san - na ho - san - na Ho - san - na Ho - san - na ho -

Piano: - san - na Ho - san - na ho - san - na ho - san - na Ho - san - na Ho - san - na ho -

Handwritten musical score for the third system. It includes the 'Dolce' marking above the vocal lines and 'Voix cel.' marking above the piano accompaniment. The lyrics for the vocal parts are:

Soprano: San - na in ex - cel - sis Be - ne - dic - tus qui ve - nit

Alto: - san - na in ex - cel - sis Ho - san - na Ho - san - na

Piano: - san - na in ex - cel - sis

in no-mi-ne-do-mi-ne *f* Ho-san-na in ex-cel-sis
f Ho-san-na Ho-san-na in ex-cel-sis
f Ho-san-na Ho-san-na Ho-san-na in ex-cel-sis *sec.*

O Salutaris Hostia.

Andante *espress.* *ad lib.*

Violoncello
Harpe
Basse solo
Orgue

Salu-ta-ris hos-ti-a

Harpe

Handwritten musical notation for Harpe (Harp) in G major, 6/8 time. The score consists of two staves. The upper staff contains a melodic line with various ornaments and grace notes. The lower staff contains a bass line with chords and rhythmic patterns.

Salu - ta - - - - - ris hosti - a que cali pan - sis is - - - - - ti -

Handwritten musical notation for Harpe (Harp) in G major, 6/8 time. The score consists of two staves. The upper staff contains a melodic line with various ornaments and grace notes. The lower staff contains a bass line with chords and rhythmic patterns.

- am Bel - i - sa pre - - - - - munt hosti - li - a

Handwritten musical notation for Harpe (Harp) in G major, 6/8 time. The score consists of two staves. The upper staff contains a melodic line with various ornaments and grace notes. The lower staff contains a bass line with chords and rhythmic patterns.

ro - bur fer auxi - li - um Sa ro - bur fer auxi - um

Handwritten musical notation for Harpe (Harp) in G major, 6/8 time. The score consists of two staves. The upper staff contains a melodic line with various ornaments and grace notes. The lower staff contains a bass line with chords and rhythmic patterns.

Violoncelle

Handwritten musical notation for Violoncelle (Cello) in G major, 6/8 time. The score consists of two staves. The upper staff contains a melodic line with various ornaments and grace notes. The lower staff contains a bass line with chords and rhythmic patterns.

Salu - ta - - - - - ris hosti - a

Handwritten musical notation for Violoncelle (Cello) in G major, 6/8 time. The score consists of two staves. The upper staff contains a melodic line with various ornaments and grace notes. The lower staff contains a bass line with chords and rhythmic patterns.

Salu - ta - - - - - ris hosti - a

poco più f

Handwritten musical notation for Violoncelle (Cello) in G major, 6/8 time. The score consists of two staves. The upper staff contains a melodic line with various ornaments and grace notes. The lower staff contains a bass line with chords and rhythmic patterns.

Orgue

Handwritten musical notation for Orgue (Organ) in G major, 6/8 time. The score consists of two staves. The upper staff contains a melodic line with various ornaments and grace notes. The lower staff contains a bass line with chords and rhythmic patterns.

Handwritten musical score for voice and piano, page 33. The score is in G major and 4/4 time. It features a vocal line with lyrics and a piano accompaniment. The lyrics include: "Que caeli pan... die osti... um", "Salu... ta... ris hosti... a", "Salu... ta... ris hosti... a que caeli pan... die os... ti... um", and "Del... la pre... mium hosti... li... a". Performance markings include "poco rall", "tempo", "Dolcissimo", "molto cres", and "poco".

Handwritten musical score for the first system. It consists of two systems of staves. The top system has a vocal line with lyrics "Dum" and "cum" and a piano accompaniment. The bottom system has a vocal line with lyrics "ro - bur fer angeli - um" and "sa ro - bur sa ro -" and a piano accompaniment. The piano part includes chords and arpeggiated figures.

Handwritten musical score for the second system. It continues the vocal and piano parts from the first system. The vocal line includes lyrics "-bur sa ro - - bur" and "fer an -". The piano accompaniment features complex textures with arpeggios and chords. Performance markings include "Dum", "Dum", "Dum", "Dolce", and "Dolce".

Handwritten musical score for the third system. It concludes the piece with tempo markings "rall", "sempre rall", and "rall". The vocal line has lyrics "-xi - - li - um". The piano accompaniment features arpeggiated chords and a final cadence. Performance markings include "p", "ff", and "p".

Agnus Dei.

Andantino quasi Andante

Soprano

Contr.

Basso

Tenore

P. Basso

Organo

Musical score for vocal parts and organ introduction. The vocal parts (Soprano, Contr., Basso, Tenore) are shown as empty staves with a 3/4 time signature. The organ part begins with a melodic line in the right hand and a bass line in the left hand, marked with a piano (*p.*) dynamic.

Soprano Dolce

Musical score for the Soprano vocal line. The lyrics are: "Agnus Dei Agnus Dei qui". The music is written in a single staff with a treble clef and includes dynamic markings such as *ff* and *p*.

toller peccata mundi misere-re re misere-re no-

Musical score for the Tenor vocal line. The lyrics are: "toller peccata mundi misere-re re misere-re no-". The music is written in a single staff with a treble clef and includes dynamic markings such as *p*.

Handwritten musical score for the first system. It consists of five staves. The top two staves are vocal lines, and the bottom three are piano accompaniment. The lyrics are: *-bis* (under the first vocal staff), *Dolce* (above the second vocal staff), and *Ag - nus Dei* (below the second vocal staff). The piano part features a melodic line in the right hand and a bass line in the left hand.

Handwritten musical score for the second system. It consists of five staves. The top two staves are vocal lines, and the bottom three are piano accompaniment. The lyrics are: *ag - nus Dei qui tol - lit pec - cata mun - di mi - se - re - re*. The piano part continues with a melodic line and bass line.

Handwritten musical score for the third system. It consists of five staves. The top two staves are vocal lines, and the bottom three are piano accompaniment. The lyrics are: *mi - se - re - re no - - - bis* (under the first vocal staff), *f* (above the second vocal staff), and *Ag - nus Dei Ag - nus* (below the second vocal staff). The piano part continues with a melodic line and bass line.

Dei qui tol-lit peccata mun-di dona no-bis

This system contains the first system of handwritten musical notation. It includes a vocal line with lyrics and a piano accompaniment. The lyrics are "Dei qui tol-lit peccata mun-di dona no-bis". The piano part features a melodic line with a slur and a bass line with chords.

Dolce
Do - - - na do - - na no - - bis pa - - cem

largement
Dona no - - bis pa - - cem

Dolce
Do - na no - bis pa - cem

comoda
Do - na no - bis pa - cem

This system contains the second system of handwritten musical notation. It includes performance markings such as "Dolce", "largement", and "comoda". The lyrics are "Do - - - na do - - na no - - bis pa - - cem" and "Dona no - - bis pa - - cem". The piano part continues with accompaniment.

Do - - - na do - - na no - - bis pa - - - - - cem

cres
Dona nobis pa - - - - - cem

cres
Do - - na no - bis pa - - - - - na

This system contains the third system of handwritten musical notation. It includes performance markings such as "cres". The lyrics are "Do - - - na do - - na no - - bis pa - - - - - cem", "Dona nobis pa - - - - - cem", and "Do - - na no - bis pa - - - - - na". The piano part continues with accompaniment.

Dim -

eser
Do - - - - na no - - - - bil pa - - - - cem

Do - - - - na no - - - - bis do - - - - na no - - - - bis pa - - - - cem

no - - - - bis pa - - - - cem Do - na no - bis pa - - - - cem

Dim -

pp

pp

Dim -

pp

do - - - - na no - - - - bil do - - - - na pa - - - - - - -

pp
do - - - - na no - - - - bis do - - - - na no - - - - bis

pp
Do - - - - na no - - - - bis pa - - - - - - - cem

C.B.

H.

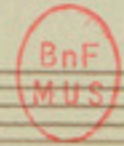
Handwritten musical score for the first system. It consists of five staves. The top two staves are vocal lines with lyrics: "cem do - na do - na no -", "do - - na pa - cem", "do - - - na do - - - no no - - - bid", and "arw do - - - no do - - - no do - - - bid". The bottom three staves are piano accompaniment, including a grand staff with treble and bass clefs. The key signature has three sharps (F#, C#, G#) and the time signature is 9/8.

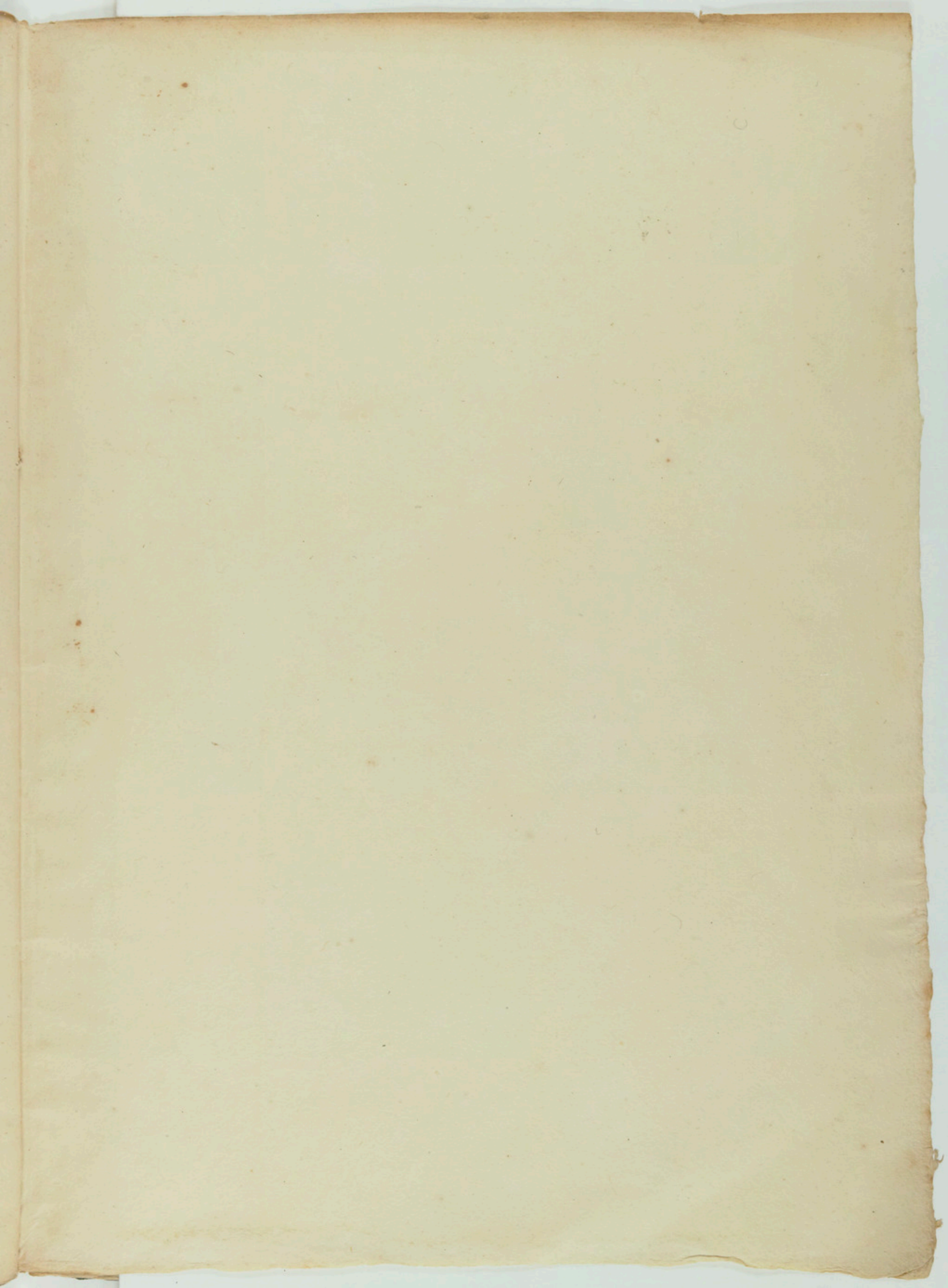
Handwritten musical score for the second system. It consists of five staves. The top two staves are vocal lines with lyrics: "bel pa - cem", "pa - - - cem", "pa - - - cem", and "do - - - - na pacem". The bottom three staves are piano accompaniment, including a grand staff with treble and bass clefs. The key signature has three sharps (F#, C#, G#) and the time signature is 9/8. Performance markings include *fp* at the beginning of the system and *sempre pp* in the piano part.

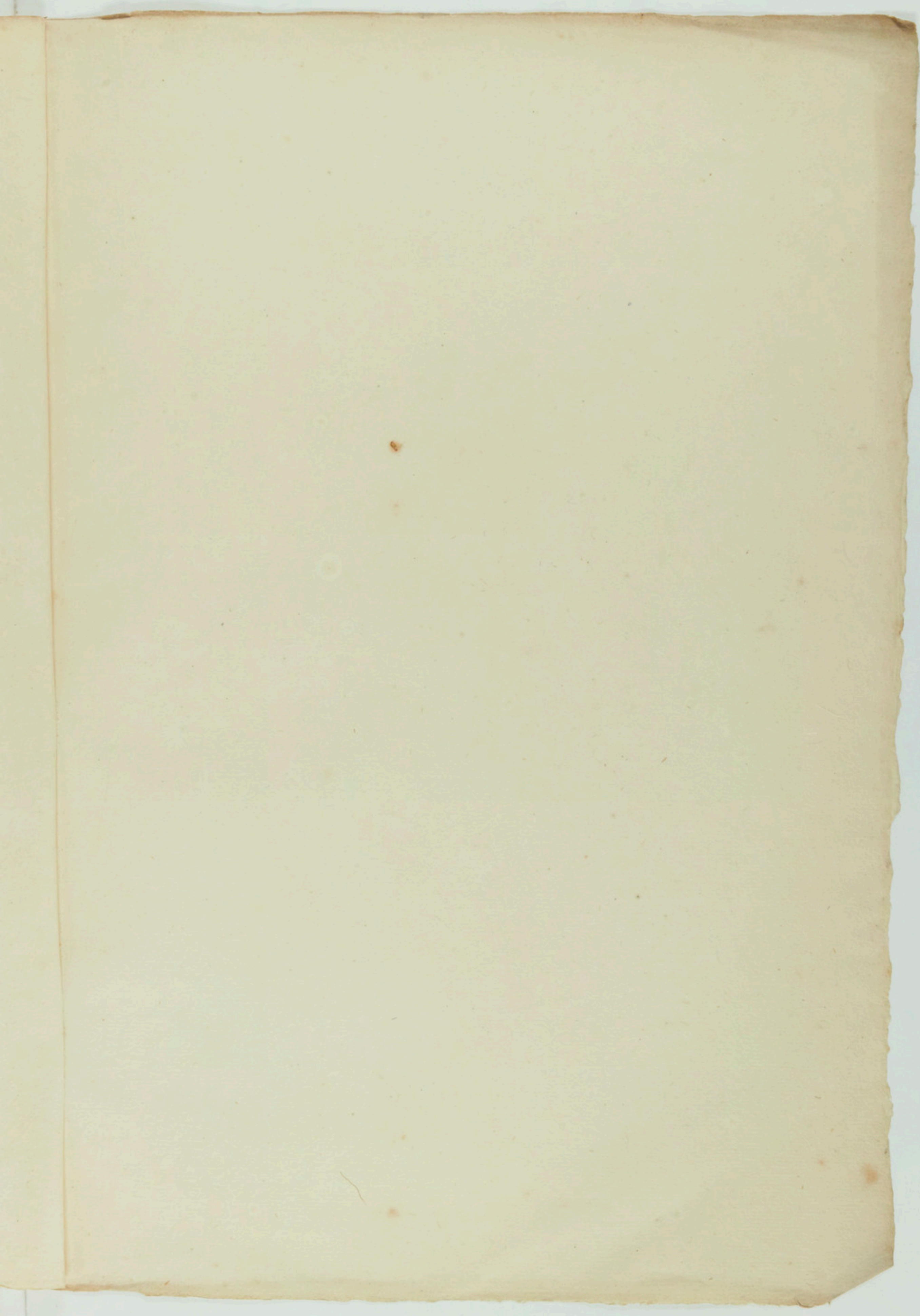
Handwritten musical score for the first system. It consists of four vocal staves and two piano accompaniment staves. The key signature is G major (one sharp). The lyrics are: "Do - - - - na no - - - - bil pa - - - - cem". The piano part includes arpeggiated chords and melodic lines.

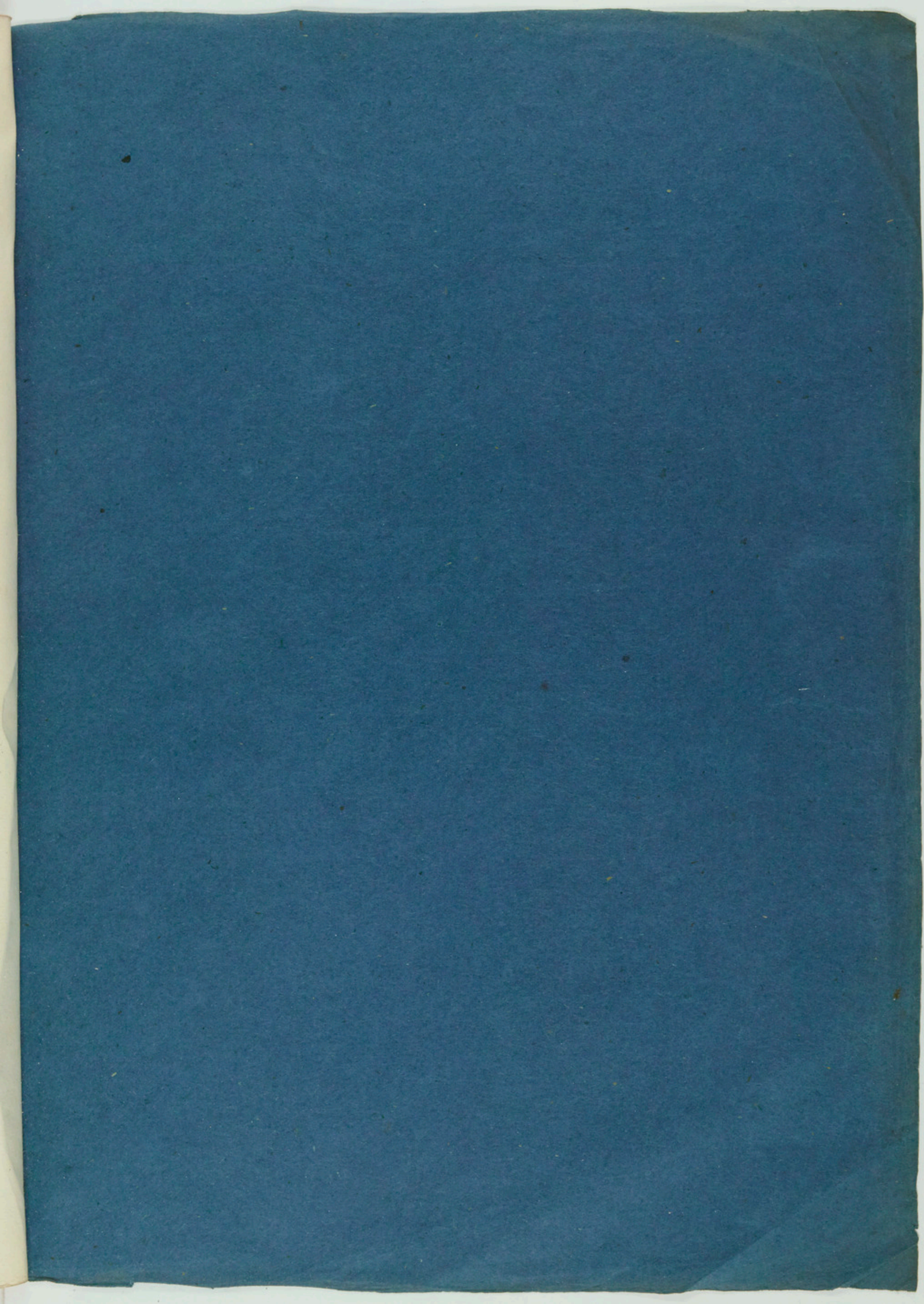
Handwritten musical score for the second system. It continues the vocal and piano parts from the first system. The lyrics are: "Do - - - - na no - - - - bil pa - - - - cem". The piano part features a prominent arpeggiated accompaniment. The system concludes with a double bar line.

And. Dev.
And. Dev.
12 April 1860
S. Br. 1860.









James D. Co.