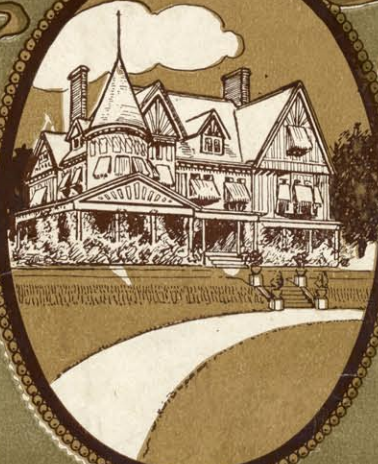
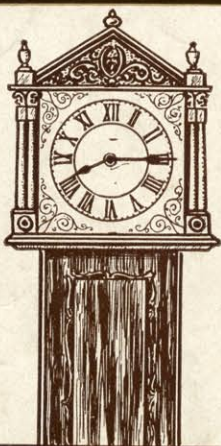


MR. MORT. H. SINGER PRESENTS
THE MUSICAL COMEDY



THE TIME PLACE & GIRL

Book & Lyrics by

**WILL M.
HOUGH**
AND
**FRANK R.
ADAMS**

I DON'T LIKE YOUR FAMILY	60
THURSDAY IS MY JONAH DAY	60
BLOW THE SMOKE AWAY	60
THE WANING HONEYMOON	60
FIRST AND ONLY	60
DIXIE I LOVE YOU	60
IT'S LONESOME TO NIGHT	60
DON'T YOU TELL (DUET)	60
SELECTION	1.00

Music by

**JOS. E.
HOWARD**



Management, LA SALLE THEATRE CO



PUBLISHED BY
CHAS. K. HARRIS
NEW YORK
— CHICAGO —
CANADIAN-AMERICAN MUSIC CO. LTD. TORONTO, CANADA
ALBERT & SON
LONDON AND SYDNEY



Singing and
Performing Rights
Reserved.

Blow The Smoke Away.

Lyric by
HOUGH & ADAMS.

Music by
JOS. E. HOWARD.

Andantino.

The piano introduction is in G major, 2/4 time, marked Andantino. It begins with a melody in the right hand and a supporting bass line in the left hand. The melody features a series of eighth and sixteenth notes, with a crescendo leading to a piano (p) section marked ritardando (rit.) towards the end.

1. You have seen a girl that you'd like to know, In the
2. Of course you've dreamed of the life of ease, You could
3. You would like to own a large touring car, With the

street, mid the throngs that pass: Or she's
lead on a lit - tle farm, Where the
pow - er of for - ty horse, And you'd

Copyright MCMVI by Chas. K. Harris.
British Rights Secured.

on the stage and you've drawn her close, With a pow-er-ful op-er-a
hea-ther blooms on the moss-y bank With a soft-ly syl-van
want a gar-age to keep it in, And a French chauff-eur, of

cresc.

glass, Then af-ter-wards, when your pipe you'd light, And
charm, You've thought of how you would loaf a-round, And
course, You fig-ured out how the price you'd spare From

ev-e-ry-thing was draw-ing right, You've thought, Gee what a
watch the green grass grow on the ground: Maude Mul-ler milk maids
the mon-ey saved in street-car fare, You'd tour the en-tire

cinch'twould be, If a girl like that loved me." Of
blithe and gay, Would talk to you all day. Of
coun-try o'er, Just run from shore to shore. Of

rall.

CHORUS.

course — you're on-ly dream-ing, Blow — the smoke a - way,
 course — you're on-ly dream-ing, Blow — the smoke a - way,
 course — you're on-ly dream-ing, Blow — the smoke a - way,

p-f

You — know you can't win her, Things don't ev-er go that way,
 You — get up at four, sir, Just to hear the break of day,
 First — you'd get a punc-ture, Then an ax-le would give way,

Still — you keep on dream-ing, Might — 'as well, no doubt —
 Wait — un-till you've seen those, Milk — maids ere you doubt, —
 If — you don't be-lieve me, Buy — a run-a-bout, —

Then your pipe goes out. Of out.
 Then your pipe goes out. Of out.
 Then your pipe goes out. Of out.

mf

Blow the Smoke away - 3.

POPULAR OPERATIC SUCCESSES

Book & Lyrics by
HOUGH & ADAMS

Music by
JOS. E. HOWARD

Successes from the Popular Musical Comedy

THE UMPIRE

As produced at the

LA SALLE THEATRE, CHICAGO, ILL

Book and Lyrics by HOUGH & ADAMS	Music by JOS. E. HOWARD
YOU LOOK AWFUL GOOD TO FATHER	60
CROSS YOUR HEART	60
I WANT A GIRL LIKE YOU	60
THE UMPIRE IS A MOST UNHAPPY MAN	60
DRUMS OF THE FORE AND AFT	60
THE SUN THAT SHINES ON DIXIELAND	60
LE IS TAKE A TROLLEY RIDE	60
CLORINDA JACKSON	60
SELECTION	100

Popular successes from the beautiful
musical satire

His Highness the Bey

Lyrics by HOUGH & ADAMS	Music by JOS. E. HOWARD
HONOLULU	60
THE LAND OF NOD	60
My GYPSY MAID	60
JULIE DOOLEY	60
THE KITTY AND THE OWL	60
STORIES OF A SUMMER NIGHT	60
IN THE ORANGE BLOSSOM LAND	60
SWEETHEARTS OF BOYHOOD DAYS	60
LOUIE	60
IN DEAR OLD KANKAKEE	60

Vocal Gems from the successful musical comedy

The Time, The Place and The Girl

Lyrics by HOUGH & ADAMS	Music by JOS. E. HOWARD
I DON'T LIKE YOUR FAMILY	60
THURSDAY IS MY JONAH DAY	60
BLOW THE SMOKE AWAY	60
THE WANING HONEYMOON	60
FIRST AND ONLY	60
DIXIE I LOVE YOU	60
IT'S LONESOME TO NIGHT	60
DON'T YOU TELL (DUET)	60
SELECTION	1.00

Vocal Gems from the musical Comedy

THE LAND OF NOD

Lyrics By HOUGH & ADAMS	Music by JOS. E. HOWARD
A HEART TO LET	50
THE BELLE OF BALD HEAD ROW	50
LOVE IS CONTAGIOUS	50
SAME OLD MOON	50
JUST A PAPER DOLL	50
YOU CAN'T KEEP A GOOD MAN DOWN	50
DEAR HEART	50
BURGLAR'S SERENADE	50
CINDERELLA	50
THE GIRL YOU DREAM ABOUT	50
WHEN YOU GROW TIRED JUST LET ME KNOW	50

By ADDISON BURHHARDT & JOS. E. HOWARD

Vocal Gems from the successful musical comedy

THE ISLE OF BONG BONG

Lyrics by
HOUGH & ADAMS

Music by
JOS. E. HOWARD

MY ILLINOIS	50	HEAP LOVE, INDIAN SERENADE	50
IF I WERE THE MAN IN THE MOON	50	OH THE DEUCE WHAT'S THE USE	50
ASK THE MAN	50	DIPLOMACY	50
YOU'RE JUST THE SAME TO ME	50	SELECTION	\$1.00
I'm LONESOME FOR YOU	50	VOCAL SCORE	2.00

Published by

NEW YORK
31 West 31st St.
Meyer Cohen, Mgr.

CHAS. K. HARRIS

CHICAGO
Grand Opera House Bldg.
Joe. M. Harris, Mgr.