

THE SONG SUCCESS

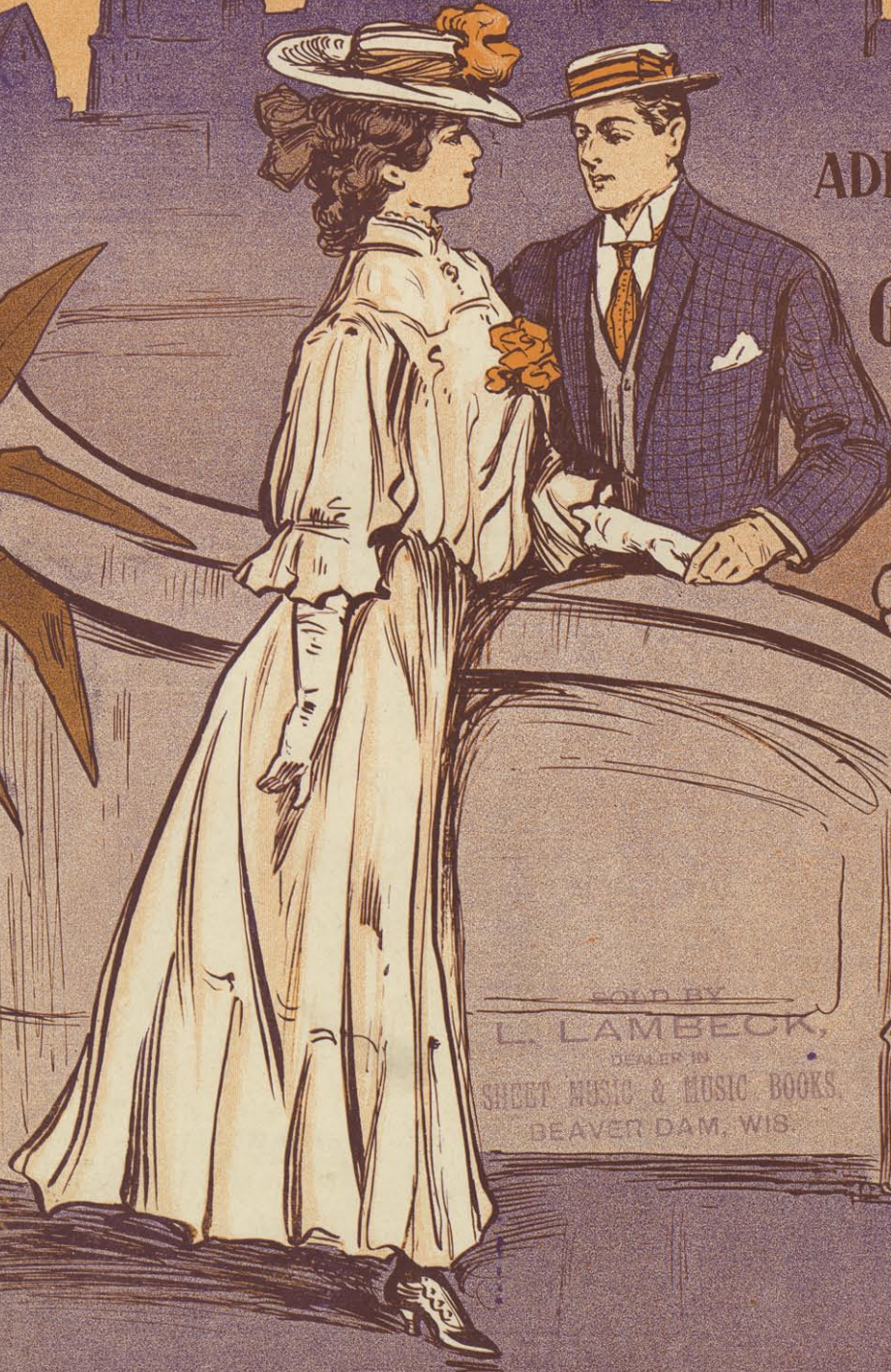
From the "BLUE MOON."

DON'T YOU THINK IT'S TIME TO MARRY?

*Gertrude Lambek
210 E. Maple Ave.
Beaver Dam Wis.*

WORDS BY
ADDISON BURKHARDT

MUSIC BY
GUS EDWARDS



SOLD BY
L. LAMBECK,
DEALER IN
SHEET MUSIC & MUSIC BOOKS
BEAVER DAM, WIS.

SUNG
BY



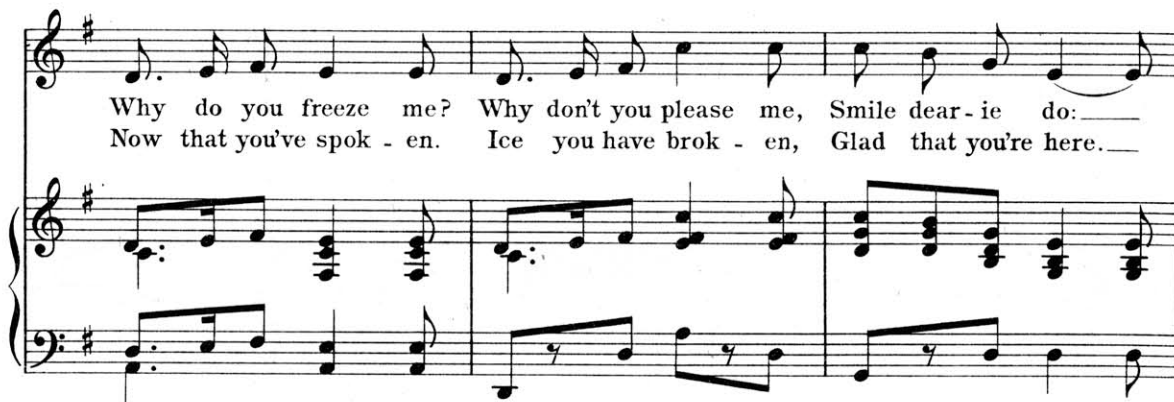
BEATRICE GOLDEN

PUBLISHED BY
GUS EDWARDS MUSIC PUB CO
1312 BROADWAY N.Y.

Don't You Think It's Time To Marry?

Words by
ADDISON BURKHARDT

Music by
GUS. EDWARDS.
Composer of { "When Tommy Atkins
marries Dolly Gray,"
"Mr. Monkey." etc.



Copyright MCMVI by Gus Edwards Music Pub. Co., 1512 Broadway, N.Y.
International Copyright Secured.

The Owners of the Copyright reserve the right to public performance in any manner or for any mechanical instrument.

There's no mis-tak - ing My heart is ach - ing Al - most a - break - ing
Be not af-fright - ed I am de-light - ed Your love's re - quit - ed;

For love of you! I've gone with Kit - ty, Oth - ers as pret - ty
You've won me dear! I've gone with Fred - dy Al - so with Ed - dy

But in this ci - ty No bet-ter dwells— Can't tell the rea - son
John's been my stead - y But I must say— You've my af - fect - ion;

When hands were squeez - in' I long for the seas - on of wed-ding bells.—
You're the con-fect - ion And the se - lect - ion Just name the day.—

CHORUS.

Dont you think its time to mar - ry? — Time to set - tle

down for life. — At the Par - son's let us

tar - ry — I'll be hub - by you'll be wife —

Smiles you give to Tom, to Dick and Har - ry. —

Make me jeal - ous as can be _____ Don't you think a

This system contains the first four measures of the song. The vocal melody is in G major, starting on G4, moving to A4, B4, and then a half note G4. The piano accompaniment features a steady eighth-note bass line in the left hand and chords in the right hand.

ring is the pro - per thing Don't you think it's

This system contains measures 5 through 8. The vocal melody continues with a half note G4, followed by a quarter note F#4, and then a quarter note E4. The piano accompaniment maintains the same rhythmic pattern.

time to mar - ry me. _____ me. _____

This system contains measures 9 through 12. Measures 9 and 10 are marked with a '1' and repeat sign. Measures 11 and 12 are marked with a '2' and repeat sign. The vocal melody has a half note G4 and a quarter note F#4. The piano accompaniment includes a crescendo leading into the final measure.

Interlude after 1st Verse.

This section consists of eight measures of piano accompaniment. It features a consistent eighth-note bass line in the left hand and chords in the right hand, providing a harmonic bridge between the verse and the next section.

LATEST SONG SUCCESSES FROM "THE HOUSE MELODIOUS"

TRY THEM OVER ON YOUR PIANO.

In A Little Canoe With You.

REFRAIN.

Moderato

by WOOD and EDWAL

In a lit - tle ca - noe with you, Where there's
just room e - nough for two,
on - ward we'll glide long with the tide,
mak - ing our vows a - new. In a

In A Little etc. 4 Copyright, MCMVI, by Gus Edwards Music Pub. Co., 1512 Broadway, New York City. International Copyright Secured.

IF A GIRL LIKE YOU, LOVED A BOY LIKE ME.

By COBB and EDWARDS.

Tempo di Valse grazioso.

CHORUS.

If a girl like you, loved a boy like me, Like a
girl like you could love, If she cared to
care, and he dared to dare What a hop - py pair they'd
be. If a girl like you, loved a boy like

Copyright, MCMVI, by Gus Edwards Music Pub. Co., 1512 Broadway, New York International Copyright Secured.

I'll Do Anything In The World For You.

By COBB and EDWARDS

I'll do a - ny - thing, dear, in the world for you,
I'll do a - ny - one too, that you tell me to, 1
wouldn't do much for Ma - ry for Sa - rah, Sal or Sue,
But I'll do most a - ny - thing in the world for you

Copyright MCMVI by The Gus Edwards Music Pub. Co. 1512 Broadway New York.

The Hardy-Gurdy Man.

By COBB & EDWARDS

Chorus.

O! the hur - dy gur - dy man, With his
hur - dy gur - dy band, Ev - 'ry lad in the
street who was light on his feet, Took a whirl with his
girl, to the mu - sic so sweet, Dan - cing with sweet

Copyright secured 1906 by Gus Edwards Music Pub. Co. 1512 Broadway New York International Copyright Secured.

For Sale wherever Music is sold or sent on receipt of 25c. by
THE GUS EDWARDS MUSIC PUB. CO.,
1512 BROADWAY, NEW YORK.