

Acte Second.

Scene Premiere. Amphion, Zethus.

Ritournelle

Amphion

Que vous sert il de me donner Des conseils que je ne puis

Suivre Vous voulez m'empêcher d'aimer Je cesserois plus tost de Viure Vous voulez m'empê-

Amphion

Zethus

cher d'aimer Je cesserois plutost de viure Les Dieux s'opposent à Valseux Et leur

ordre en jureuo cable Si vous ne craignez pas les Dieux Craignez un riuual redoutable

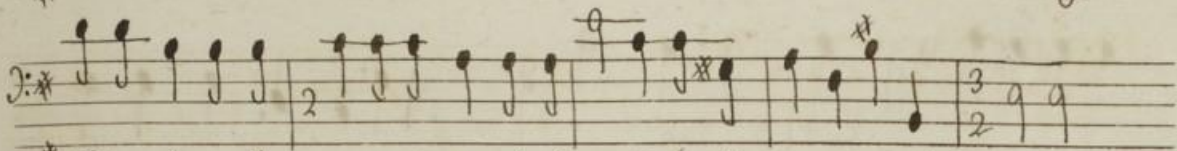
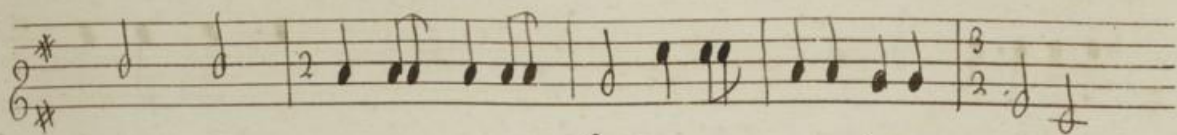
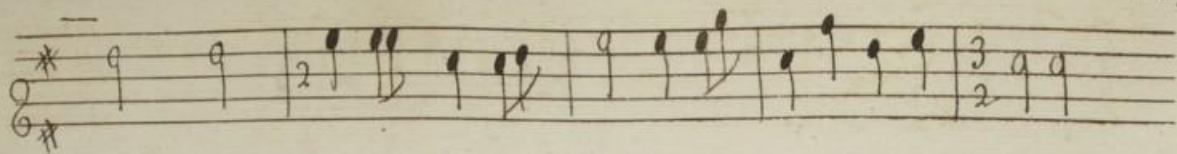
Amphion

Rien n'arreste l'ncœur amoureux Le perit Le perit jamais ne l'estonne

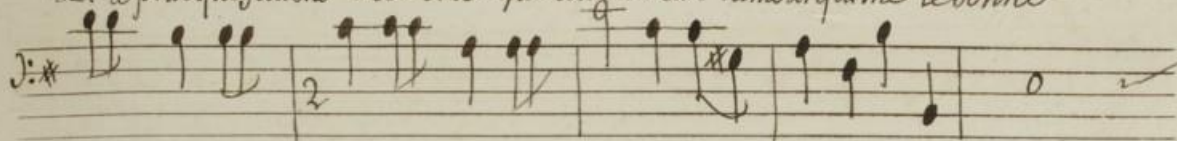
Basse

Et le prix que j'attens me sera glorieux Si c'est l'amour qui me le donne

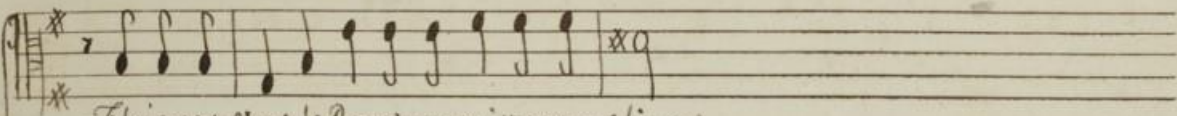
Acte second



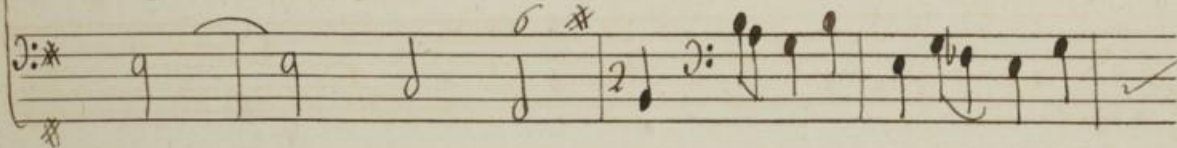
* Et le prix que j'attens me sera glorieux si c'est l'amour qui me le donne



Basse

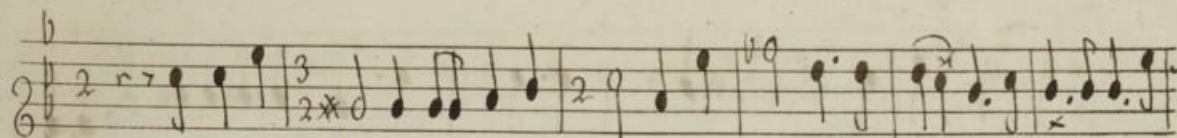


Eloignez vous le Roy va paroistre en ces lieux

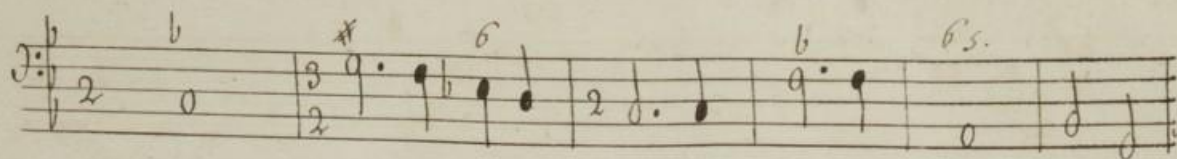
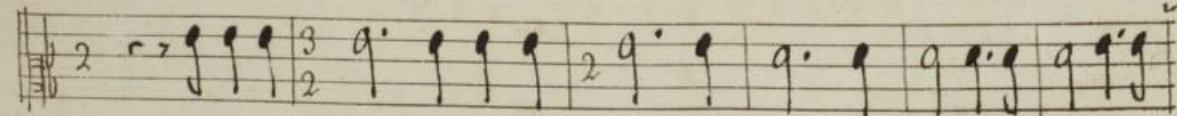
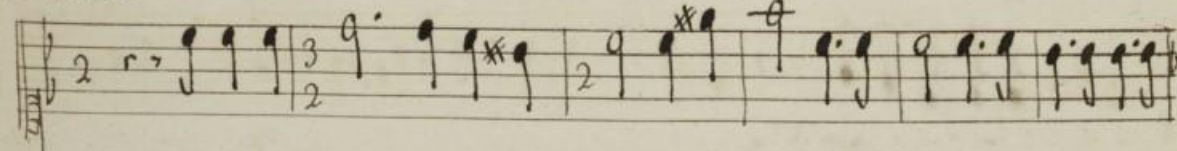


Scene seconde

Lycus. Letius.



Prelude



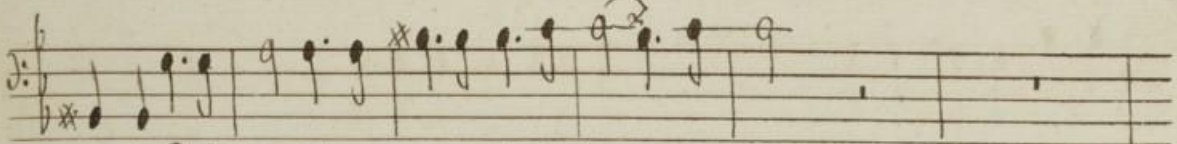
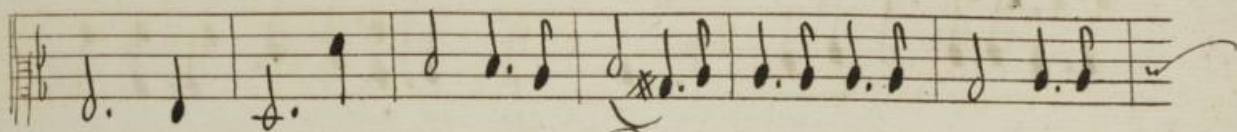
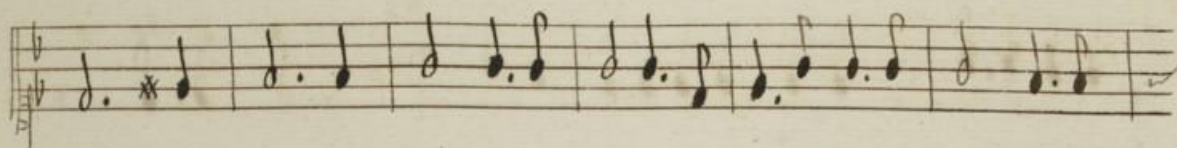
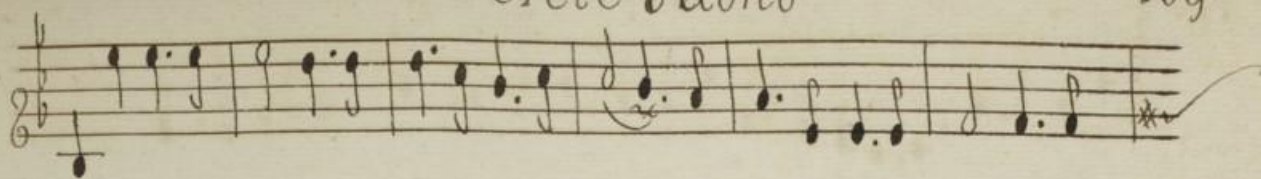
Amphion.

Handwritten musical score for Amphion, measures 1-10. It features a vocal line and a keyboard accompaniment. The key signature has one flat (B-flat). The vocal line begins with a treble clef and a common time signature. The keyboard part is in bass clef with a common time signature. There are various ornaments and accidentals throughout. The word "Lycus" is written above the vocal line in measure 10, and "Cessez Ces." is written below it.

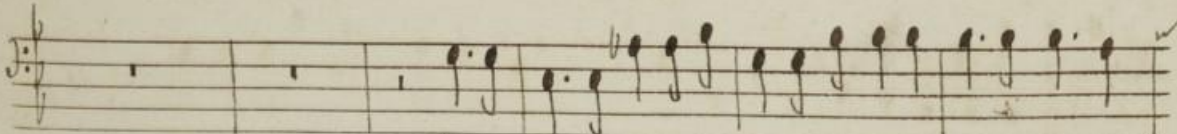
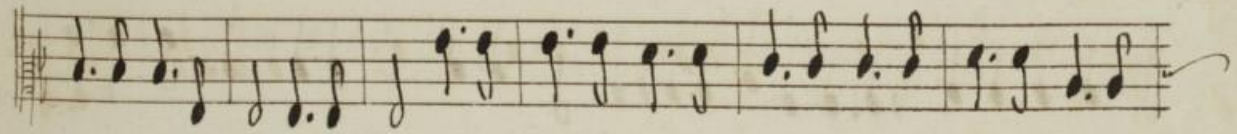
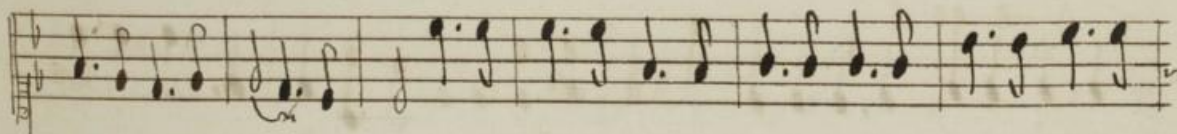
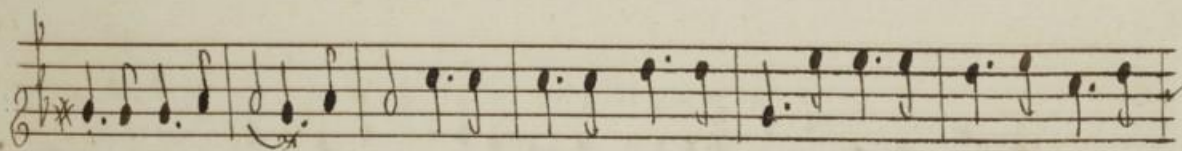
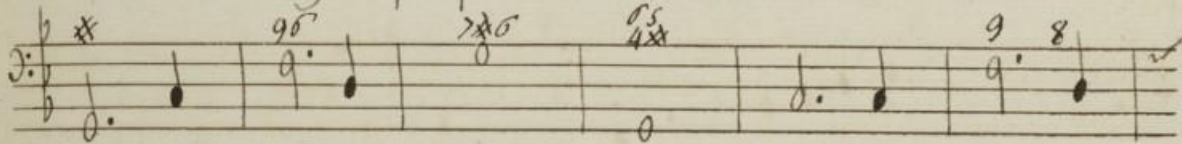
Handwritten musical score for Amphion, measures 11-20. The key signature changes to two flats (B-flat and E-flat). The time signature changes to 3/2. The vocal line and keyboard accompaniment continue. The lyrics "Cessez d'entretenir ma Flamme Amour vous m'avez trop flatté Vous ne pouvez rien sur mon'" are written below the vocal line. There are various ornaments and accidentals throughout.

Acte Second

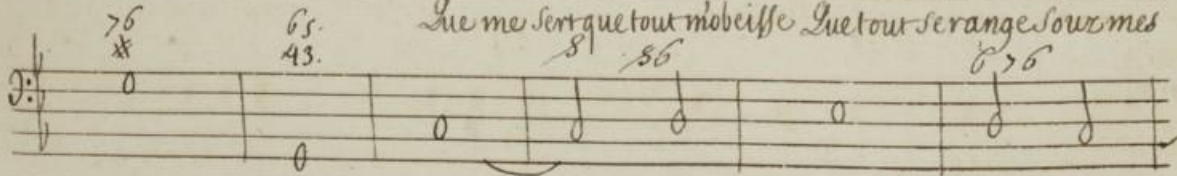
109.



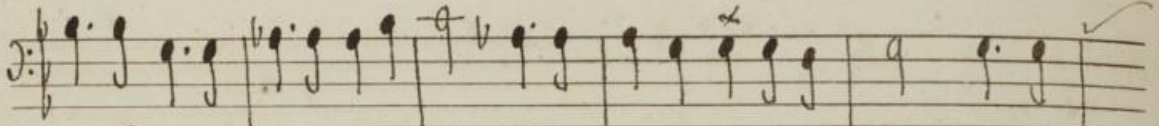
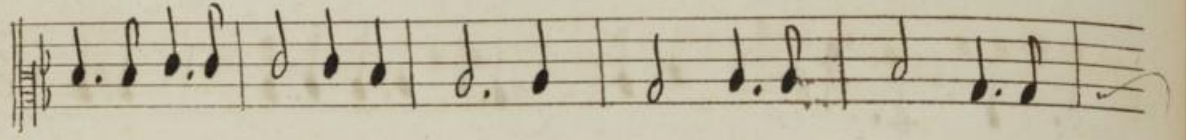
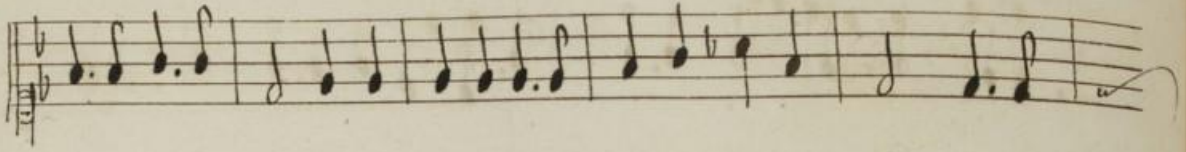
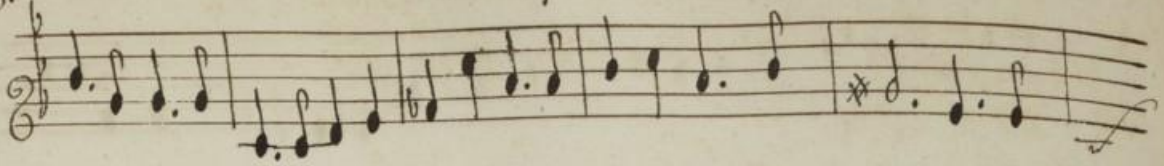
ame Rendez-moy le repos que vous m'avez osté



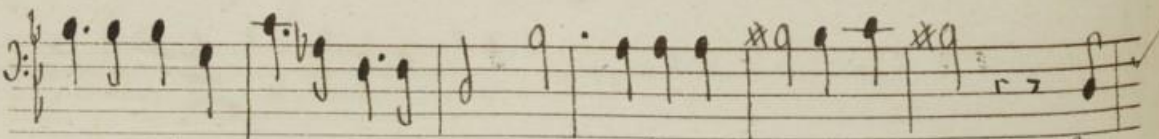
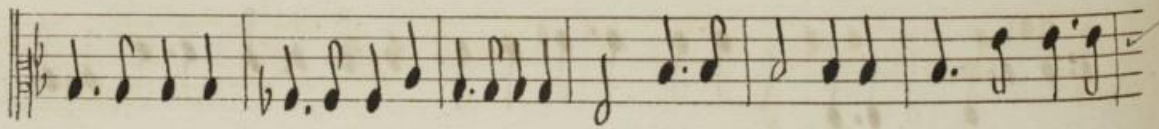
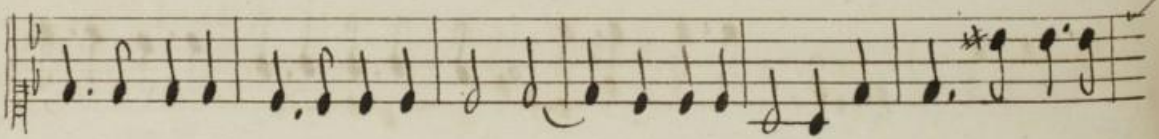
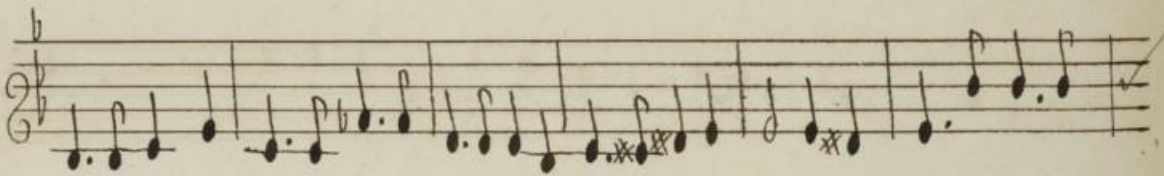
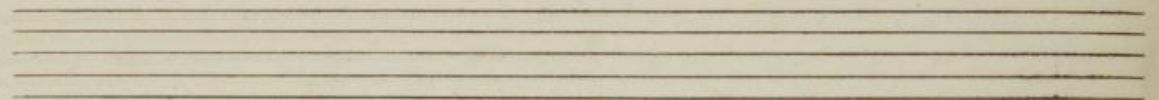
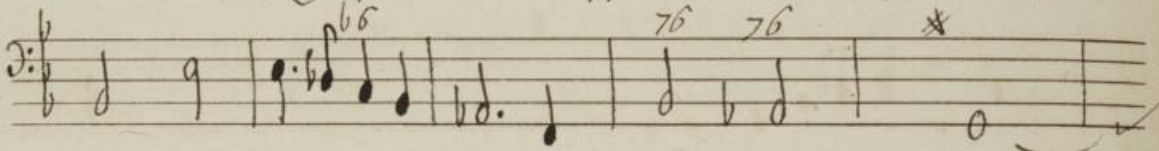
Que me sert que tout m'obeisse Que tout se range sous mes



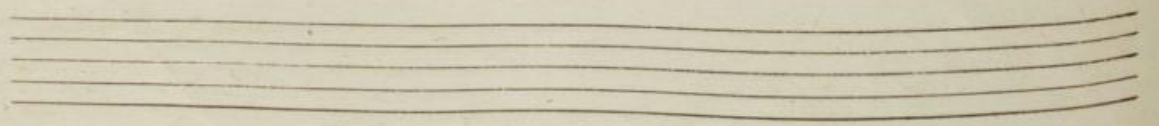
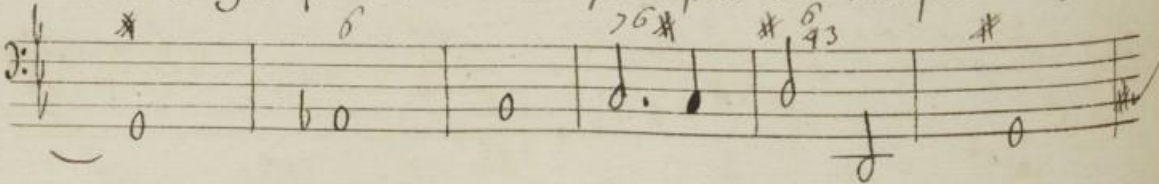
Amphion



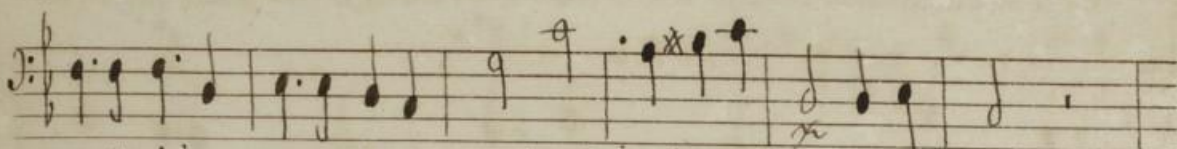
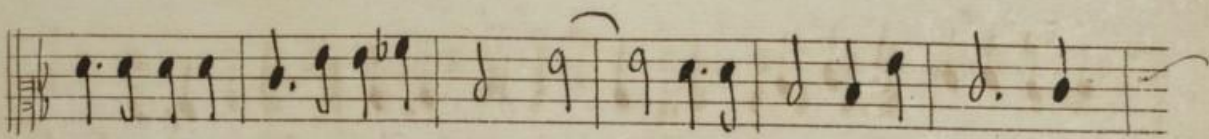
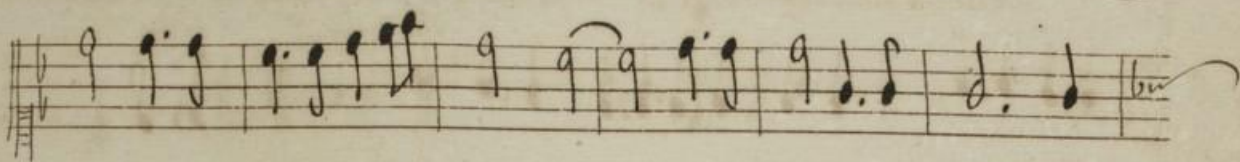
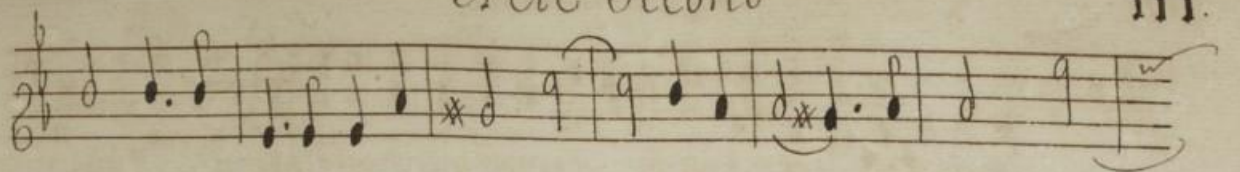
loix L'amour n'epargne pas les Rois Et je pousse tout son caprice Je



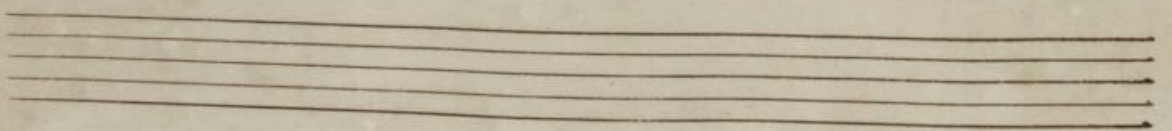
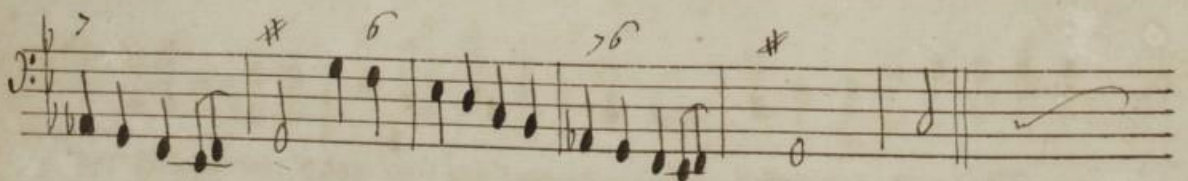
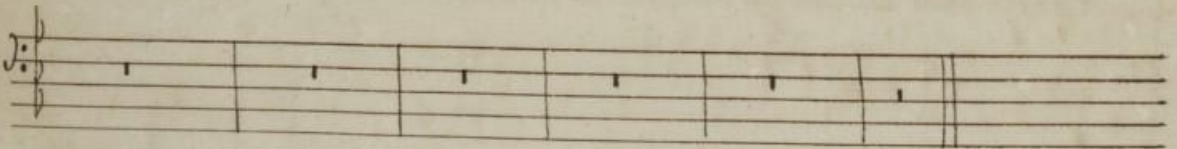
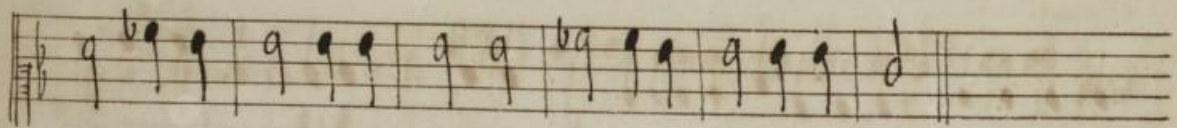
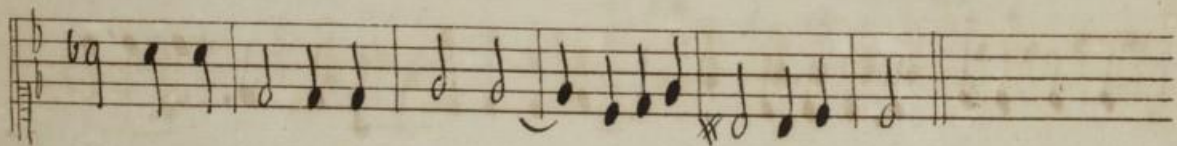
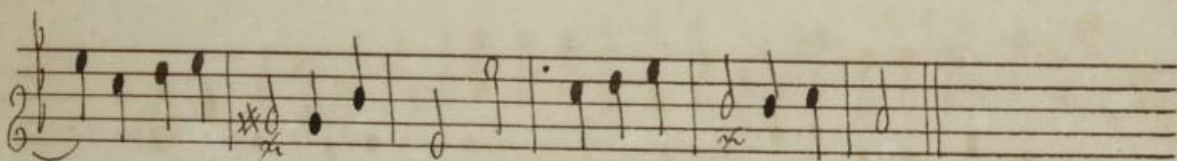
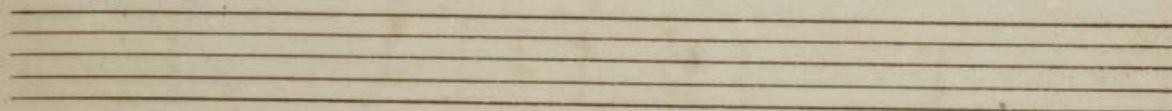
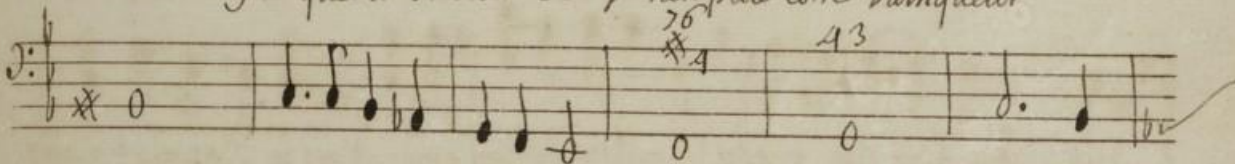
ne Voulois regner que sur Vn cœur Et je n'en puis estre vainqueur Je



Acte Second



ne Voulois regner que sur un cœur Et je n'en puis estre vainqueur



Amphion

Zethus *Lycus*

Dou vient cette sombre tristesse Seigneur quel étrange chagrin Niobé mettra:

-hit et mon cœur l'ame en vain Elle a toute ma tendresse Et je n'ay que son de-

-dain Amphion s'est rendu le maistre de son ame Mais je scauray l'enpu-

-rir Dieux qui fauorisez Sa flamme vous ne pouvez l'en garentir

Zethus

N'irritez point les Dieux leur Vangeance est a craindre De leur grandeur Us sont ja-

-roux Efforcez vous plustost d'esteindre Lamour qui vous fait plaindre Un rival

plus heureux que vous

Je puniray ce rival temeraire Il ne

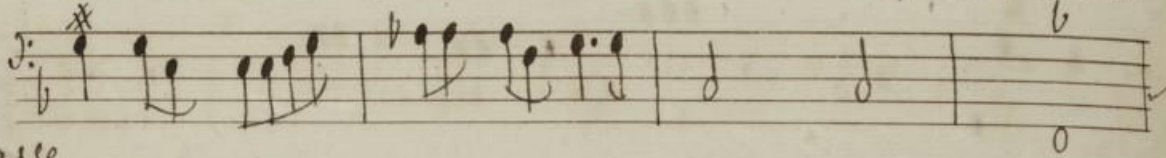
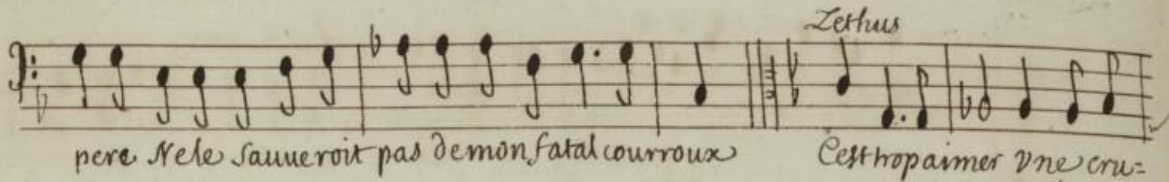
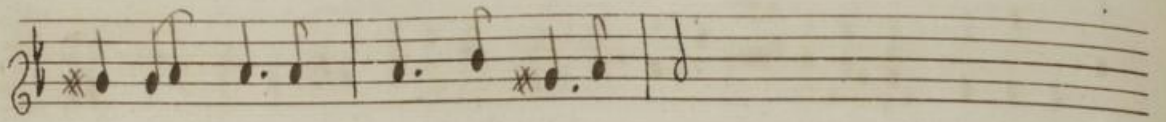
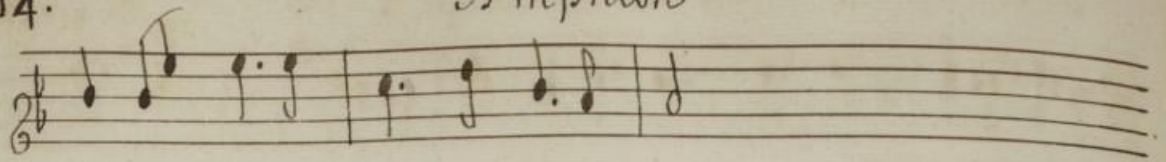
Basse

peut eviter mes coups Le plus puissant des Dieux qu'il dit estre son pere Ne le saueroit

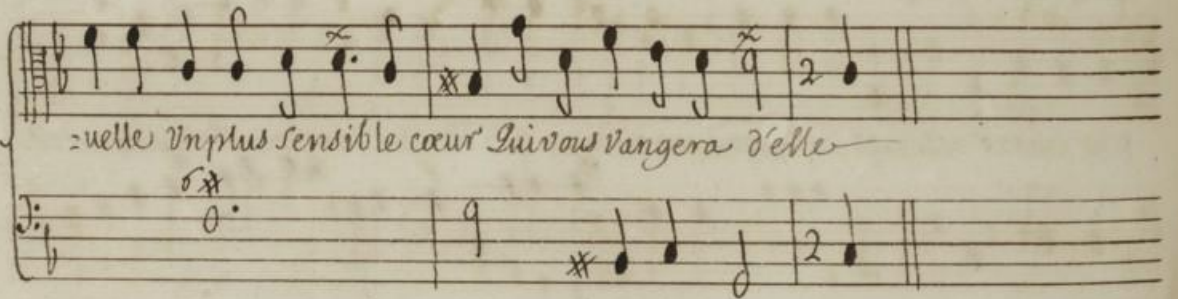
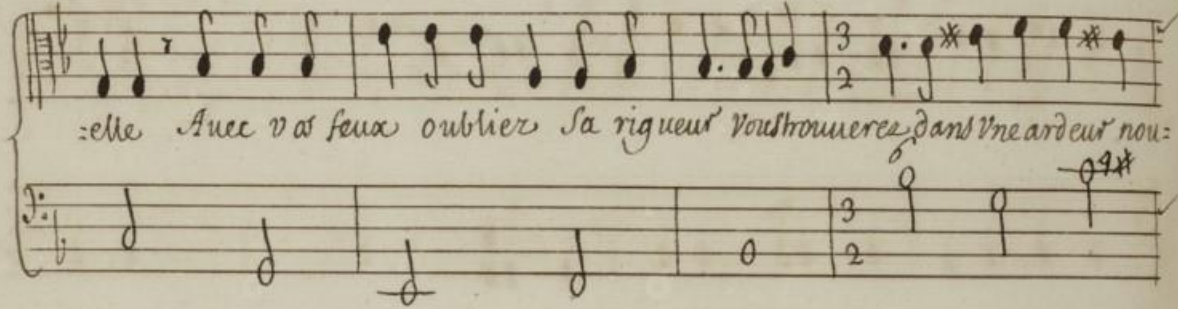
Basse

pas demon fatal courroux Le plus puissant des Dieux qu'il dit estre son

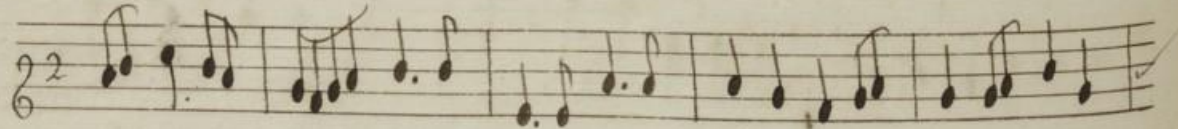
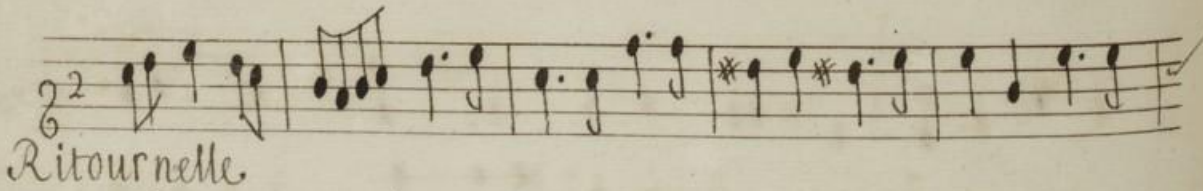
Ainphion



Basse



Scene 3^e Iyous. Niobé.



Acte Second

Musical staff with notes and rests.

Musical staff with notes and rests.

Musical staff with notes and rests.

Empty musical staff.

Musical staff with notes and rests.

Vous me fuyez toujours sans vouloir m'écouter Pour vous nuit et jour je soupire Je

Musical staff with notes and rests.

Musical staff with notes and rests.

nay que ce mot avous dire Et vous m'empêchez de parler Pour mon a =

Musical staff with notes and rests.

Musical staff with notes and rests.

mour que dois je craindre Souveraine dans mes Etats Rien ne doit icy vous con =

Musical staff with notes and rests.

Musical staff with notes and rests.

raindre Helas mon cœur ne comprend pas Quele Vostre puisse se plaindre

Musical staff with notes and rests.

Helas helas mon cœur ne comprend pas Que le vostre puisse se plaindre

Niobé

 Mon cœur n'estoit plus à donner Quand vous m'avez declare vostre flam-

-me Un autre regnoit dans mon ame Plaignez vous de l'amour qui vous fait refu-

Lycus

 -ser Un cœur qui n'est plus à donner Insensible pour moy vous en aimez vous

-me autre Et vous en faites vani- té Je vois mon amour meprisé Mais trem-

Niobé

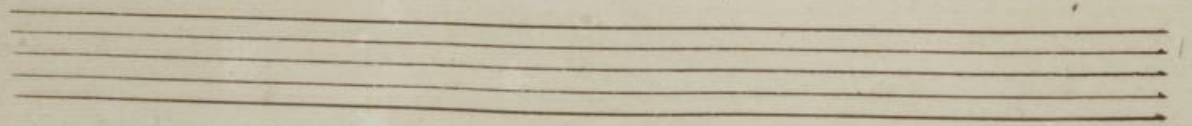
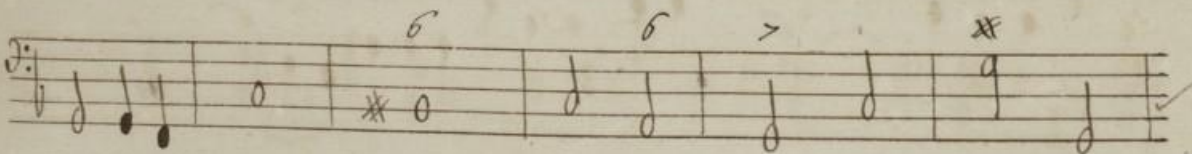
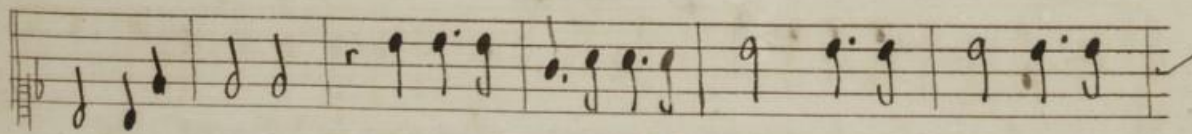
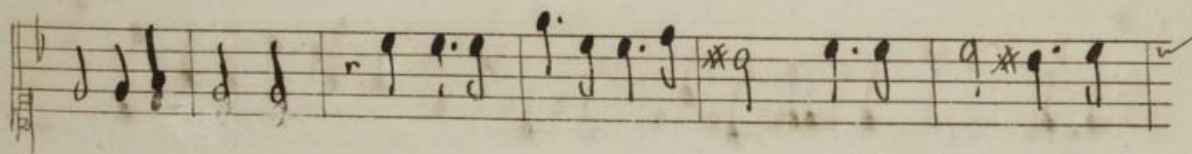
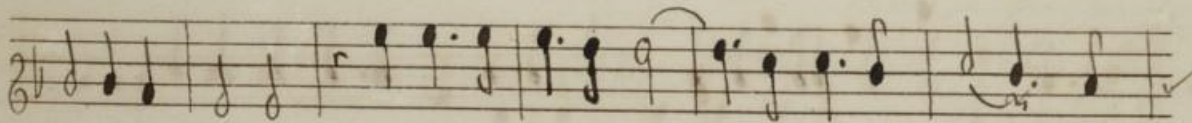
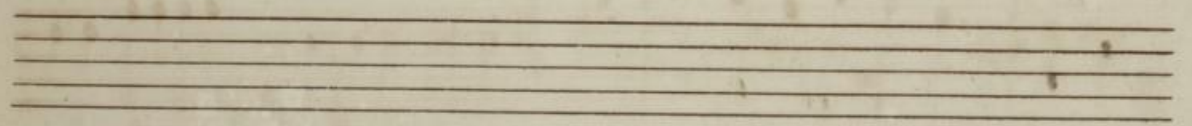
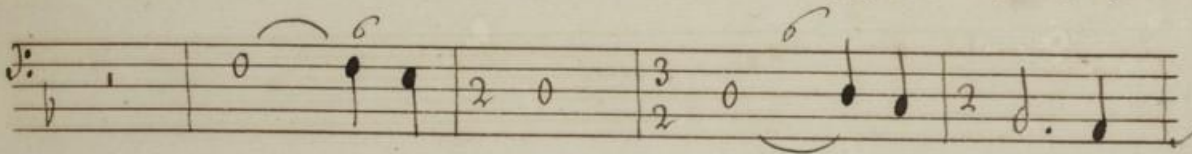
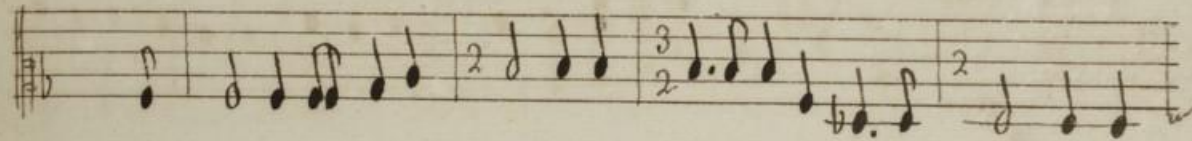
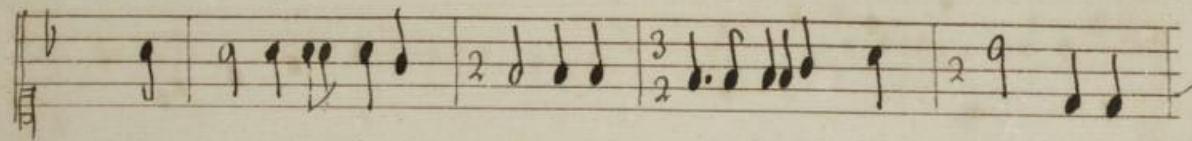
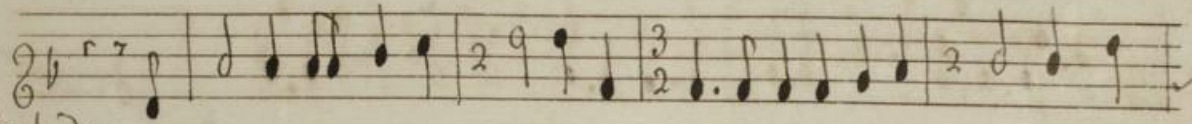
 -blez aussi pour le vostre En quel trouble met il mon esprit agité

Acte Second.

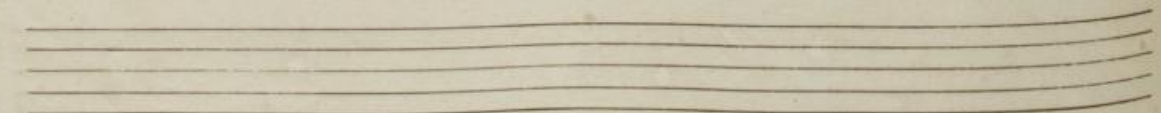
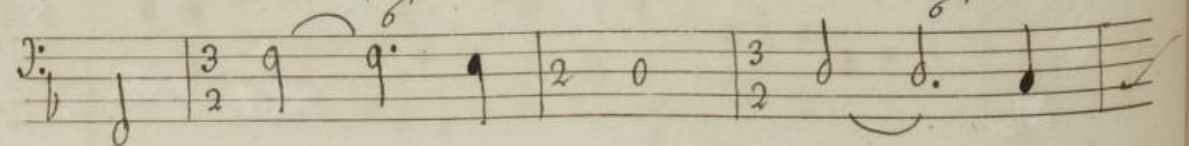
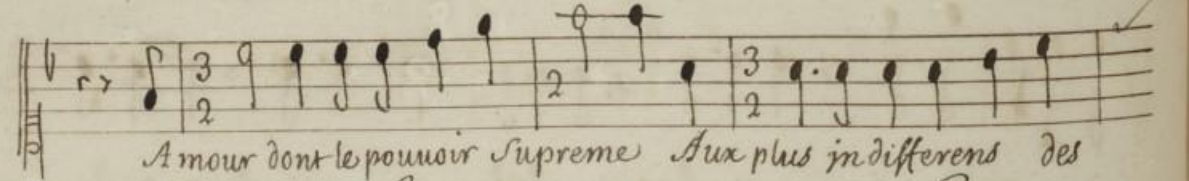
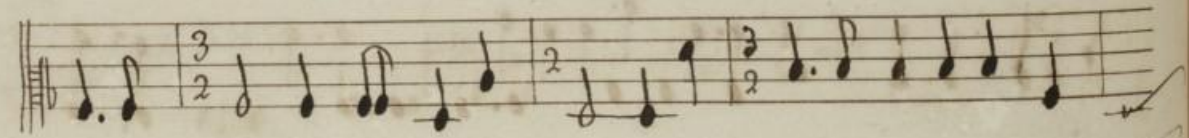
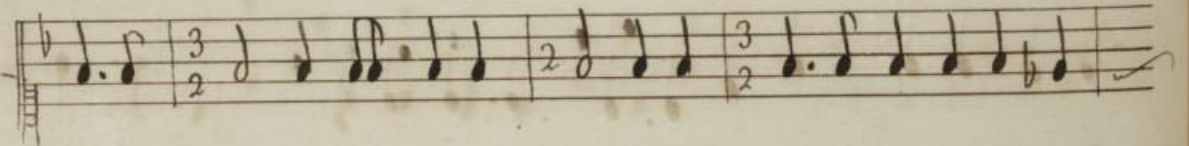
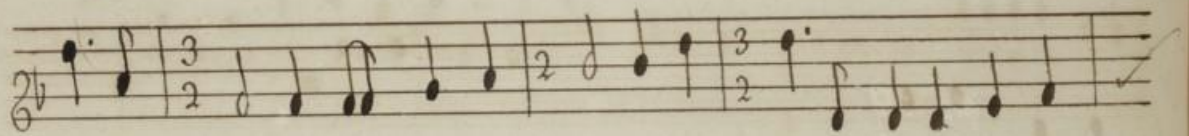
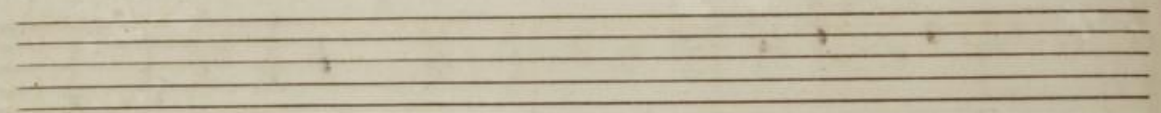
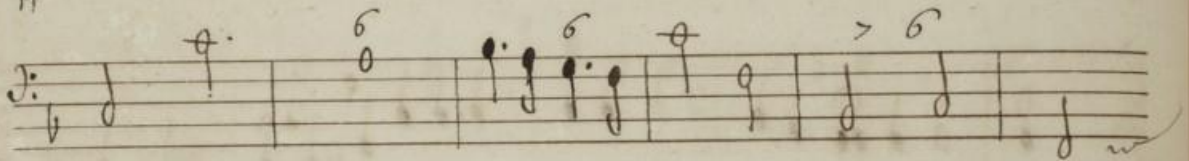
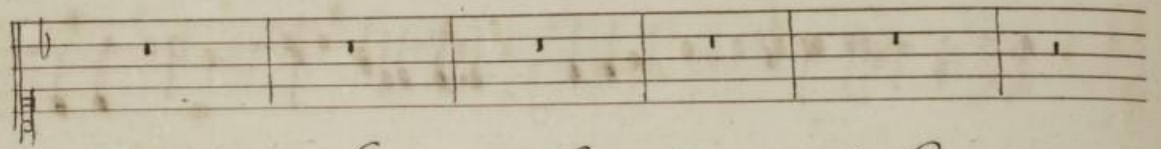
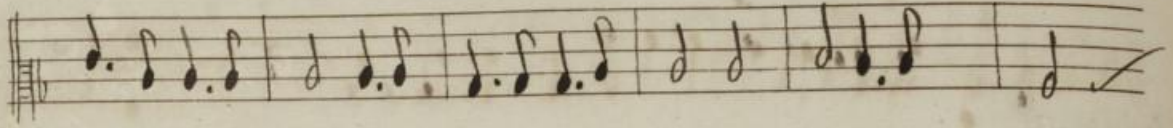
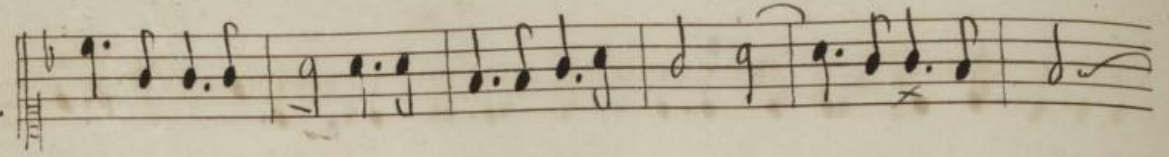
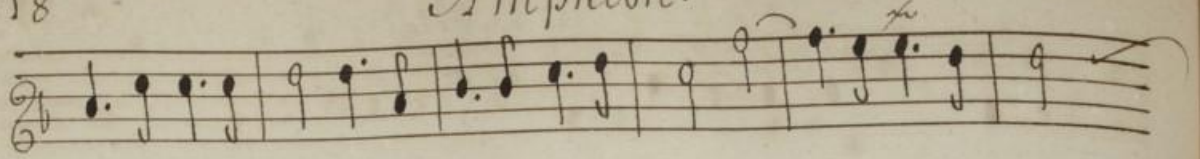
Scene Quatrieme

Niobe. L'Amour. Suite.

Prelude

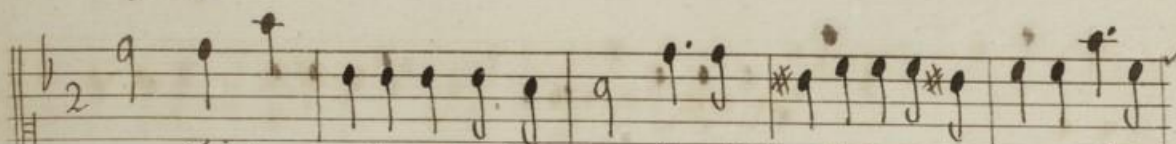
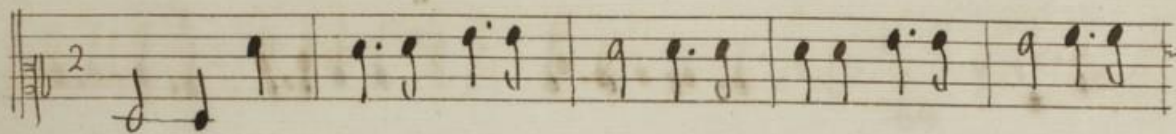
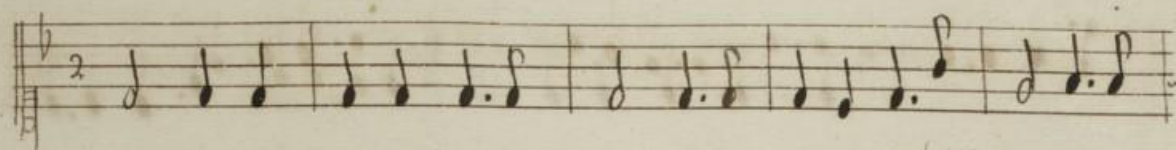
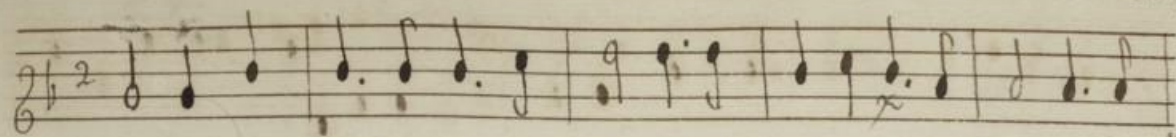


Amphion.

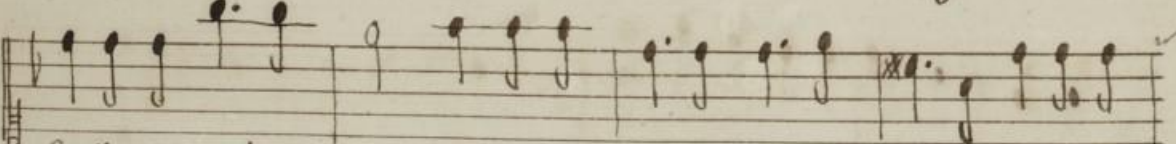
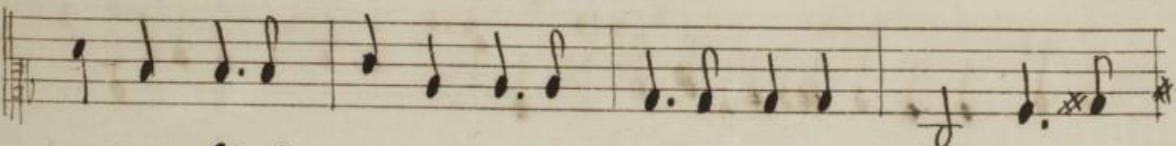
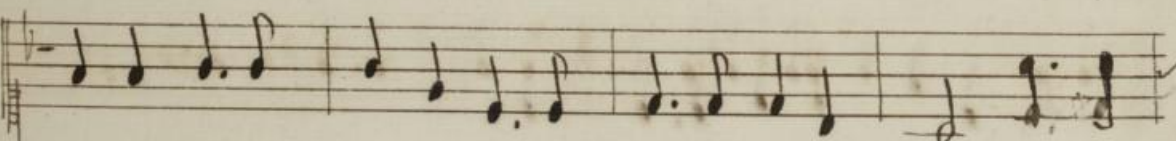
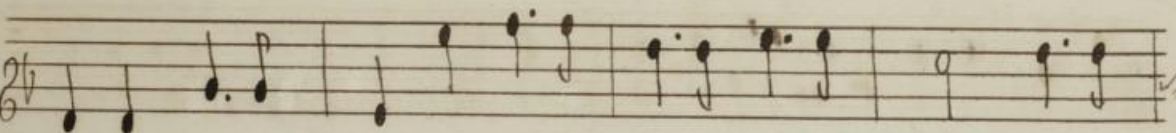
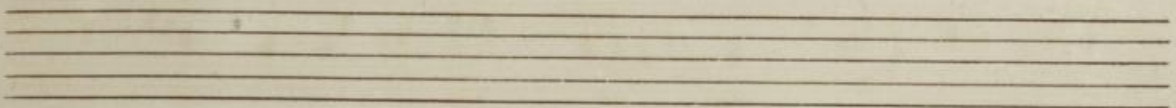
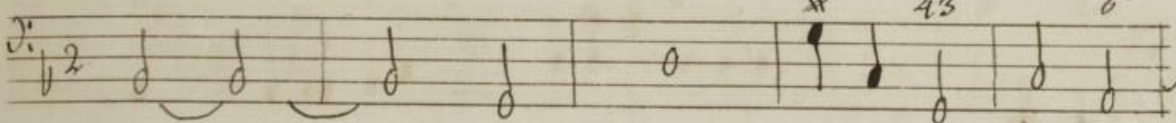


Acte Second

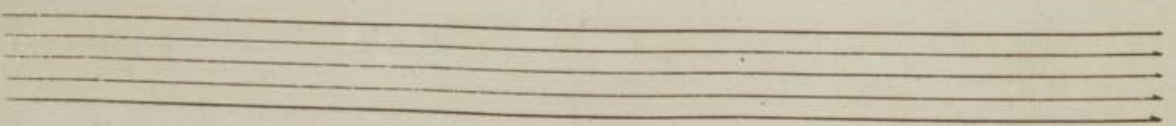
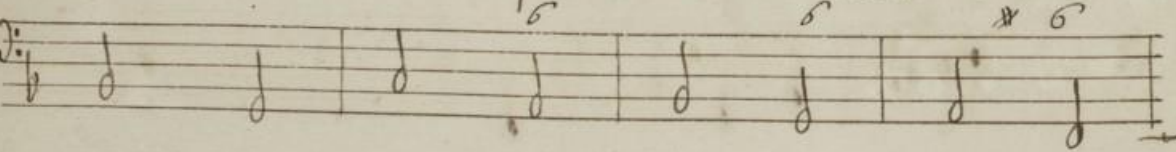
119.



cœurs Fais trouver de grandes douceurs Au Milieu de la rigueur mesme Que je



Souffre vn cruel tourment Et que le sort de mon amant Me donne de



Amphion

justes craintes Tu dois favoriser mes vœux Calme mes soupirs et mes

plaintes Puisque je bruste de tes yeux

Acte second

121.

Flutes

3

Handwritten musical notation for the first system of Flutes, starting with a treble clef and a 3/4 time signature.

Flutes

3

Handwritten musical notation for the second system of Flutes.

3

Handwritten musical notation for the third system of Flutes.

L'amour veut de la constance Ses maux charment nos desirs Il se

Violons

3

Handwritten musical notation for the first system of Violons.

Handwritten musical notation for the second system of Violons.

Handwritten musical notation for the third system of Violons.

plait a la souffrance Et fuit les autres plaisirs Il se plait a la souffrance Et

Violons

Handwritten musical notation for the fourth system of Violons.

Handwritten musical notation for the fifth system of Violons.

Handwritten musical notation for the sixth system of Violons.

fuit les autres plaisirs

Violons

Handwritten musical notation for the seventh system of Violons.

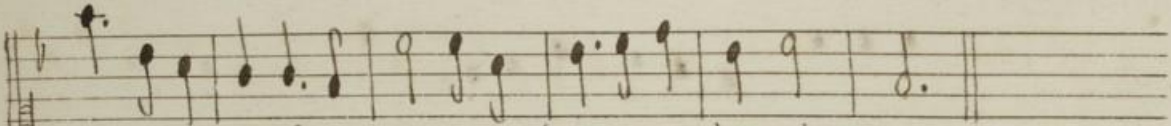
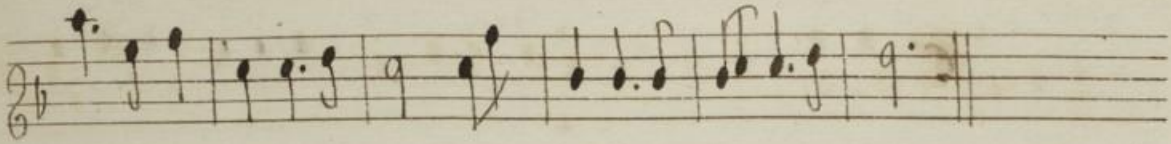
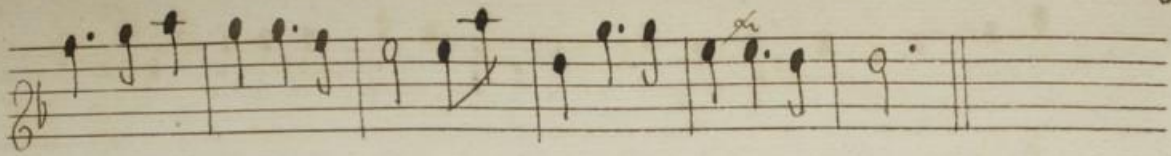
Amphion

Si l'on se plaint de ses chaines C'est qu'on ne les connoist pas Si l ne donnoit que des
 Si l'on se plaint de ses chaines C'est qu'on ne les connoist pas Si l ne donnoit que des

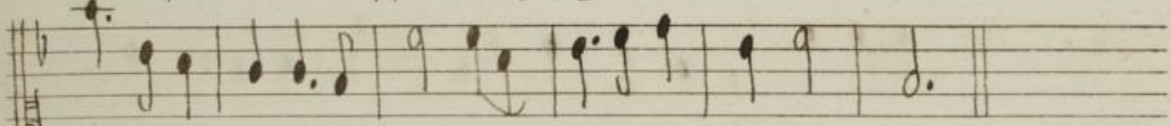
peines Il n'auroit point tant d'appas
 peines Il n'auroit point tant d'appas

Flutes
 Flutes
 Il comble de ses delices Tous ceux qui le seruent bien Qui pretend le fle-
 Violons

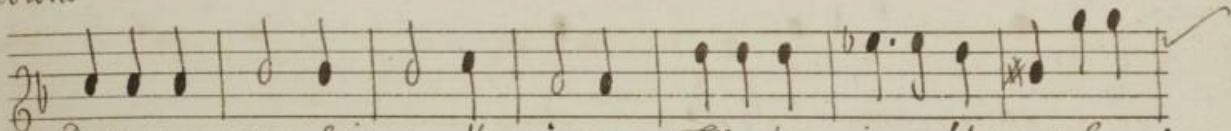
Acte Second



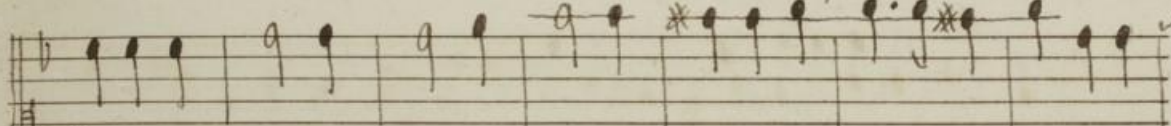
chir en parlant de Supplices Ny gagera jamais rien



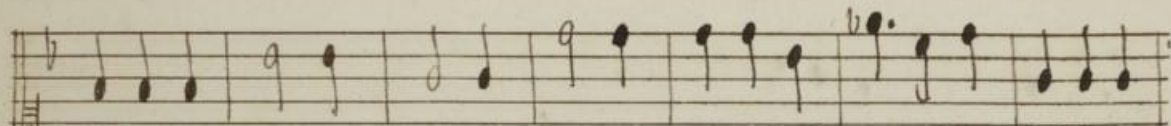
Violons



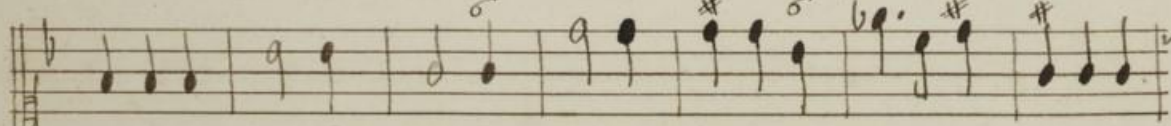
De votre cœur suivez l'envie Elle n'est point a blasmer La rai-



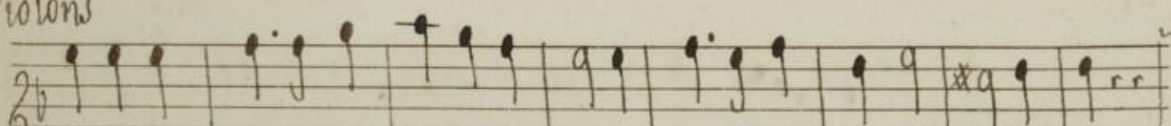
De votre cœur



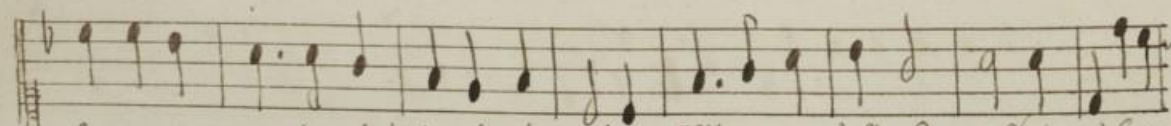
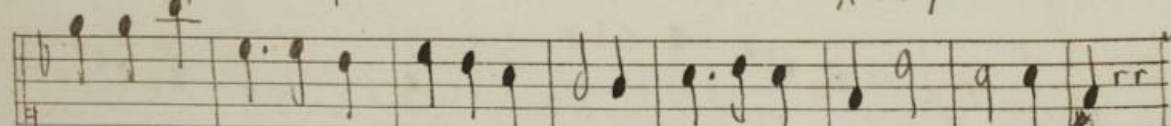
De votre cœur suivez l'envie Elle n'est point a blasmer la rai-



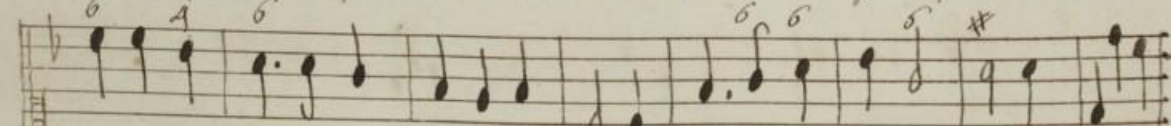
Violons



Son nous permet les plaisirs de la vie Elle ne deffend pas d'aimer



Son nous permet les plaisirs de la vie Elle ne deffend pas d'aimer La rai-



Violons

Amphion

La raison nous permet les plaisirs de la vie Elle ne deffend

son La raison nous permet les plaisirs de la vie Elle ne deffend

Violons

pas d'aimer Elle ne deffend pas d'aimer

pas d'aimer Elle ne deffend pas d'aimer

Violons

Fort

Doux

Chaconne en Echo

Basse

Acte second

125

Fort Douce

This system contains the first four staves of music. The top staff is in treble clef with a key signature of one flat and a common time signature. It begins with a *Fort* dynamic marking, which transitions to *Douce* later in the system. The second and third staves are in alto and tenor clefs, respectively. The bottom staff is in bass clef and contains a simple harmonic accompaniment of quarter notes. A *tr* (trill) is marked above the first note of the bass line. Checkmarks are present at the end of each staff.

Basse

Fort Douce

This system contains the next four staves of music. The top staff is in treble clef and features a *Fort* dynamic marking that changes to *Douce*. The second and third staves are in alto and tenor clefs. The bottom staff is in bass clef and continues the harmonic accompaniment with quarter notes. Checkmarks are present at the end of each staff.

Basse

Fort

This system contains the final four staves of music on the page. The top staff is in treble clef and begins with a *Fort* dynamic marking. The second and third staves are in alto and tenor clefs. The bottom staff is in bass clef and continues the harmonic accompaniment. A *tr* (trill) is marked above the first note of the bass line. The number '43' is written at the end of the bottom staff. Checkmarks are present at the end of each staff.

Basse

Amphion

Doux *fort*

43. 6

Basse

Doux *fort*

Basse

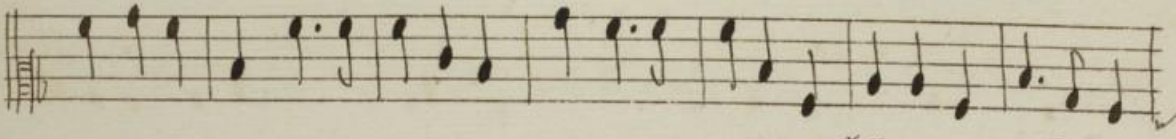
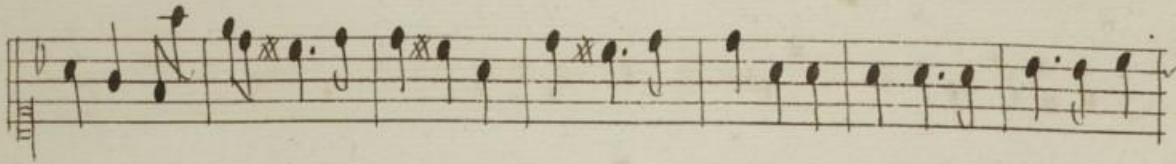
Doux *fort*

Basse

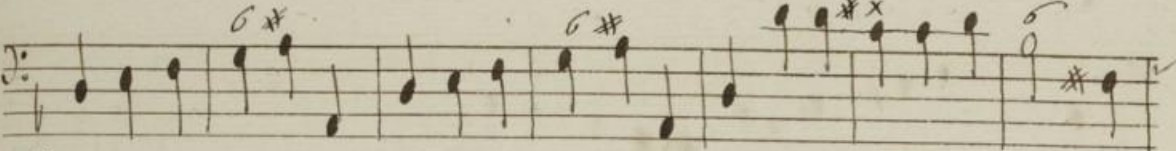
Acte second

127.

Doux *Fort*

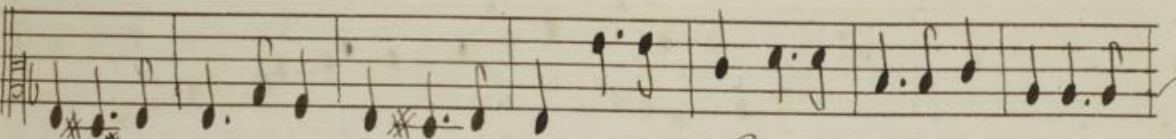
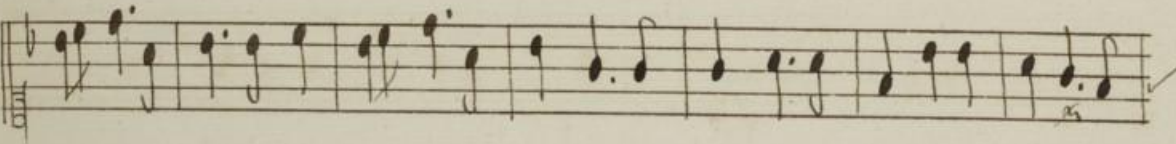
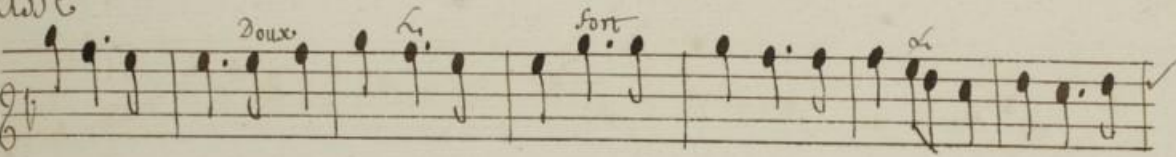


6#

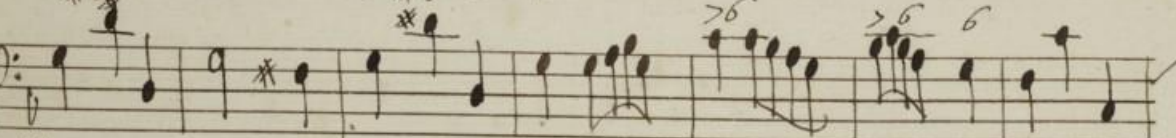


Basse

Doux *Fort*

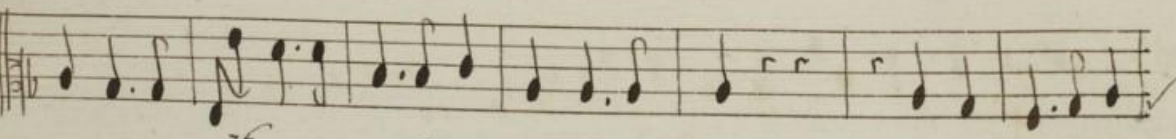
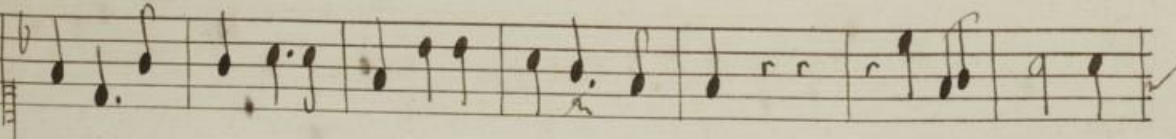
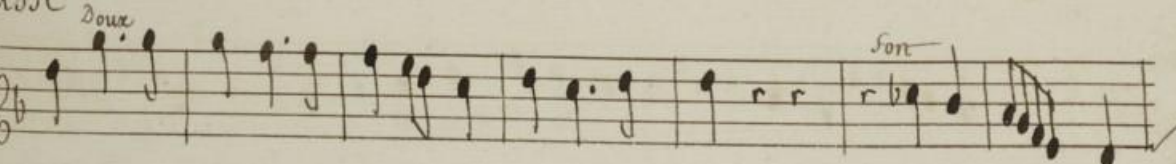


6#



Basse

Doux *Fort*



6#



Basse

Amphion

Doux

Scene Cinquieme.

Mercury. Suite. Niobe.

Insuivant de Mercury

Fuyez l'amour et ses chaines Il n'a que des plaisirs trompeurs

Il nous fait trop de peines Quand il est maistre de nos cœurs Il nous

Fait trop de peines Quand il est maistre de nos cœurs

Acte second

2

Gaiotte

Musical staff with treble clef, 2/4 time signature, and a key signature of one flat (B-flat).

Musical staff with bass clef, 2/4 time signature, and a key signature of one flat (B-flat).

Musical staff with treble clef, 2/4 time signature, and a key signature of one flat (B-flat).

Musical staff with bass clef, 2/4 time signature, and a key signature of one flat (B-flat). Includes a '6' fingering above the staff.

Basse

Musical staff with treble clef, 2/4 time signature, and a key signature of one flat (B-flat).

Musical staff with bass clef, 2/4 time signature, and a key signature of one flat (B-flat).

Musical staff with treble clef, 2/4 time signature, and a key signature of one flat (B-flat).

Musical staff with bass clef, 2/4 time signature, and a key signature of one flat (B-flat). Includes a '6' fingering above the staff.

Basse

Musical staff with treble clef, 2/4 time signature, and a key signature of one flat (B-flat).

Musical staff with bass clef, 2/4 time signature, and a key signature of one flat (B-flat).

Musical staff with treble clef, 2/4 time signature, and a key signature of one flat (B-flat).

Musical staff with bass clef, 2/4 time signature, and a key signature of one flat (B-flat). Includes a '6' fingering above the staff.

Basse

Mercurc
Un suuant de

L'amour rend Un cœur a plaindre Euites ce qui l'a d'appas On ne

peut assez craindre Pour ceux qui ne le craignent pas On ne peut assez

craindre Pour ceux qui ne le craignent pas On reprend la Gauotte

Mercurc

A vos feux Diane est contraire La mere d'Apollon S'oppose à vos desirs

Vous calmer leur colere Ne pouvez plus d'inutiles Soupirs

Vous aimez sans esperance Ne craignez point de changer Jamais l'amour ne s'of-

Acte second

131.

=fence Quand de nos cœurs l'inconstance Bannit ce qu'on n'ose aimer Vous ai-

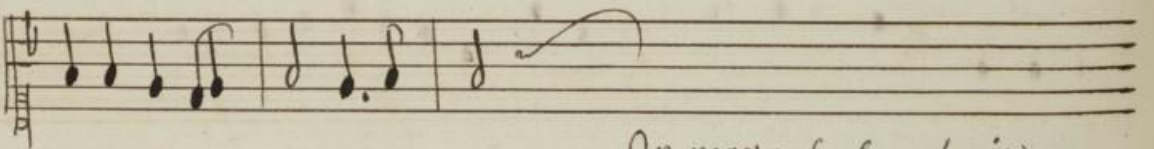
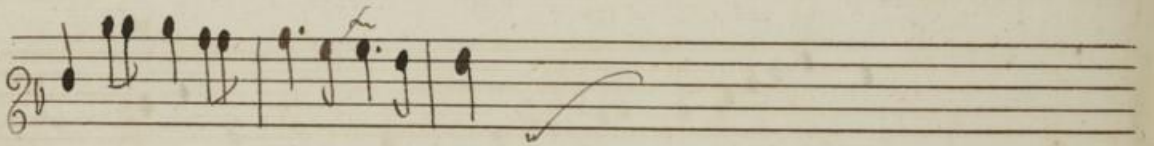
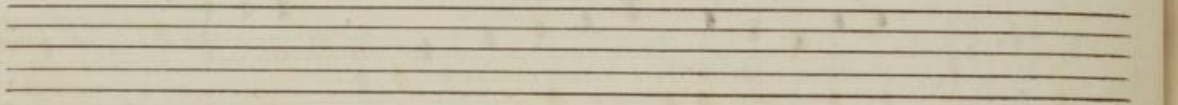
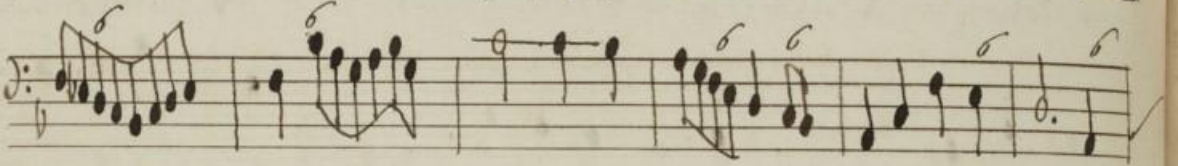
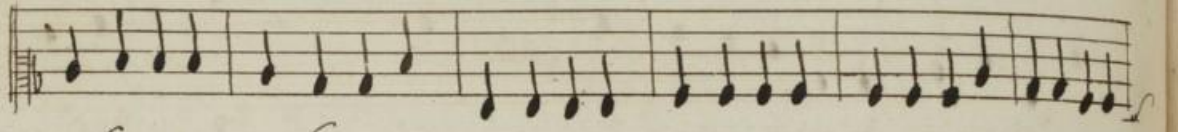
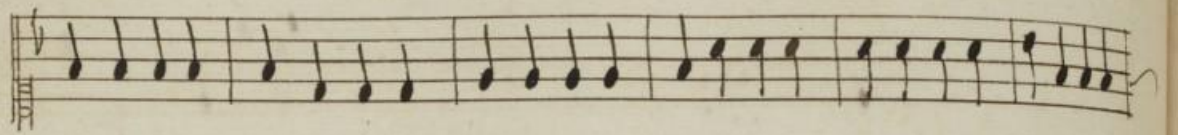
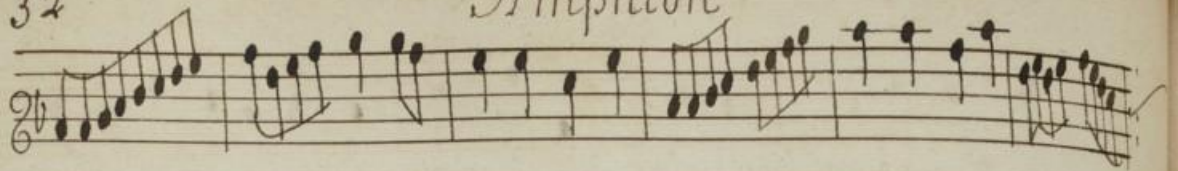
mez Sans esperance Ne craignez point de changer Ne croyez pas que mon

coeur se degage Cela n'est pas en mon pouvoir Auoustirer d'icy

l'ordre des Dieux m'engage Et je suis malgré moy Vn importun deuoir

Symphonie

Amphion



On repete la symphonie

