

# Suite B-Dur

Johann Anton Reichenauer

## Ouverture

Violino 1

5

8

12

16

20

28

36

44

51

67

75

83

1. 2.  $\frac{2}{4}$   $\text{ff}$   $\text{fz}$

91 Musical notation for measure 91, featuring a treble clef, a key signature of two flats, and a 2/4 time signature. The measure contains a sequence of eighth notes, a triplet of eighth notes marked with a bracket and 'tr', a quarter rest, and a sixteenth rest. A '6' is written above the staff.

102 Musical notation for measure 102, featuring a treble clef, a key signature of two flats, and a 2/4 time signature. The measure contains a sequence of eighth notes, a quarter note, and a sixteenth note.

108 Musical notation for measure 108, featuring a treble clef, a key signature of two flats, and a 2/4 time signature. The measure contains a sequence of eighth notes, a quarter note, and a sixteenth note.

115 Musical notation for measure 115, featuring a treble clef, a key signature of two flats, and a 2/4 time signature. The measure contains a sequence of eighth notes, a quarter note, and a sixteenth note. A wavy line symbol is written above the staff.

123 Musical notation for measure 123, featuring a treble clef, a key signature of two flats, and a 2/4 time signature. The measure contains a sequence of eighth notes, a quarter note, and a sixteenth note.

131 Musical notation for measure 131, featuring a treble clef, a key signature of two flats, and a 2/4 time signature. The measure contains a sequence of eighth notes, a quarter note, and a sixteenth note. A wavy line symbol is written above the staff.

139 Musical notation for measure 139, featuring a treble clef, a key signature of two flats, and a 2/4 time signature. The measure contains a sequence of eighth notes, a quarter note, and a sixteenth note.

143 Musical notation for measure 143, featuring a treble clef, a key signature of two flats, and a 2/4 time signature. The measure contains a sequence of eighth notes, a quarter note, and a sixteenth note. A '7' is written below the staff.

148 Musical notation for measure 148, featuring a treble clef, a key signature of two flats, and a 2/4 time signature. The measure contains a sequence of eighth notes, a quarter note, and a sixteenth note. A first ending bracket is shown above the staff, with a repeat sign and a second ending bracket.

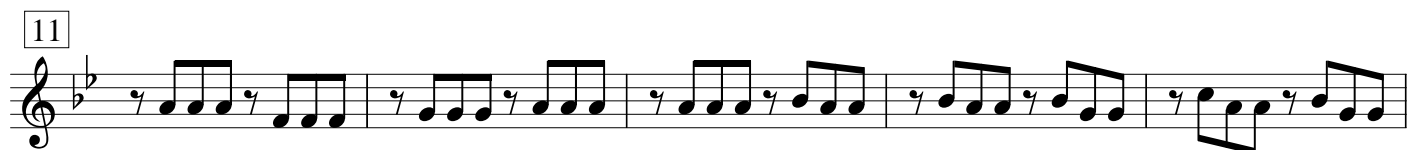
# Bouree



# Menuet



# Adagio



# Allegro



11



16



Fine

21



26



31



# Polonese



9



15



21

