

---

Artemio  
Motta

---

10 Concerti  
op. 1

---

Violino 2

---

© 2011 kompy

CreativeCommons–Attribution–ShareAlike–3.0

---

# Concerto Primo

Artemio Motta  
op. 1 No. 1

## Violino 2

Grave assai e spiccato

Musical score for Violino 2, Grave assai e spiccato, measures 1-31. The score is written in treble clef, key of B-flat major (two flats), and 3/2 time. It consists of six staves of music. The first staff (measures 1-6) features a slow, spacious melody with long notes and fermatas. The second staff (measures 7-12) continues the melody with a series of eighth notes. The third staff (measures 13-18) shows a change in texture with a mix of quarter and eighth notes. The fourth staff (measures 19-25) features a more rhythmic pattern with eighth notes and a fermata. The fifth staff (measures 26-30) continues the rhythmic pattern with a fermata. The sixth staff (measures 31) concludes the section with a fermata and a dynamic marking of *p*.

Allegro

Musical score for Violino 2, Allegro, measures 1-17. The score is written in treble clef, key of B-flat major (two flats), and common time (C). It consists of four staves of music. The first staff (measures 1-6) features a more rhythmic melody with eighth notes and rests. The second staff (measures 7-11) continues the melody with a series of eighth notes and a fermata. The third staff (measures 12-16) shows a change in texture with a mix of quarter and eighth notes. The fourth staff (measures 17) concludes the section with a fermata.

22



27



32



36



40



44



49



54



59



*p*

## Grave



6



## Allegro

9

20

28

39

47

56

66

73

82

94

104

2

# Concerto Secondo

Artemio Motta  
op. 1 No. 2

## Violino 2

Allegro

4

7

10

14

17

19

21

24

26

28

*p*

*f*


## Grave

Musical score for Violino 2, Grave section. The score is written in treble clef, F major, and common time (C). It consists of two staves. The first staff contains measures 1 through 7, featuring a slow, melodic line with long notes and rests. The second staff, starting at measure 8, continues the melodic line with some rhythmic variation, including eighth notes and a triplet of eighth notes.

## Allegro

Musical score for Violino 2, Allegro section. The score is written in treble clef, F major, and common time (C). It consists of ten staves, numbered 1 through 29. The first staff (measure 1) shows the beginning of the fast section with a melodic line. The subsequent staves (measures 2-4) continue the melodic line. From measure 5 onwards, the score is dominated by rapid sixteenth-note passages, creating a dense and rhythmic texture. The section concludes with a few final melodic notes in measure 29.

31



33




35




37




39



42



46




50




*f*


## Grave



6



12



## Allegro

7

15

23

30

37

45

52

55

62

66

72

*p*

*f*

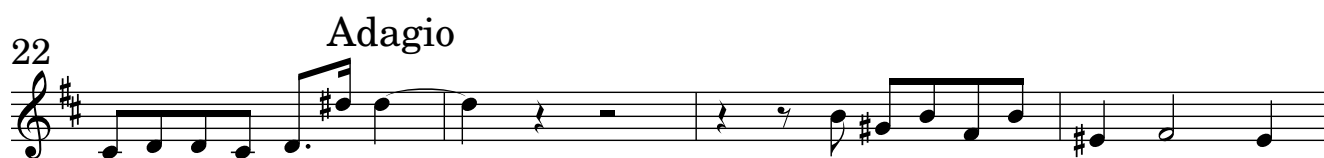


# Concerto Terzo

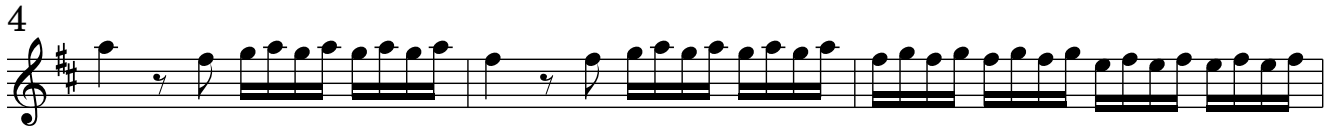
Violino 2

Artemio Motta  
op. 1 No. 3

Allegro assai

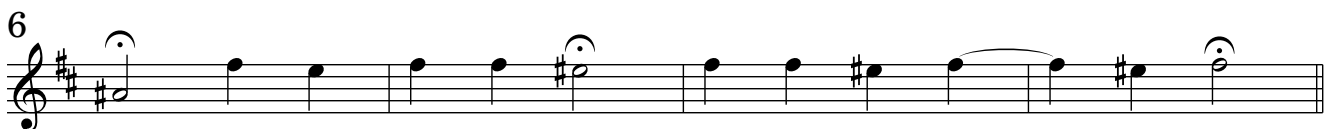


## Allegro





### Grave



## Allegro

Musical score for Violino 2, Allegro, measures 12-71. The score is written in treble clef with a key signature of two sharps (D major) and a 3/4 time signature. The tempo is marked Allegro. The score consists of ten staves of music, with measure numbers 12, 21, 28, 34, 39, 46, 55, 60, 66, and 71 indicated at the beginning of each staff. The music features various dynamics, including *p* (piano) and *f* (forte). The first staff (measures 12-20) begins with a 4-measure rest, followed by a series of quarter notes. The second staff (measures 21-27) is marked *p*. The third staff (measures 28-33) is marked *f*. The fourth staff (measures 34-38) is marked *p*. The fifth staff (measures 39-45) is marked *f*. The sixth staff (measures 46-54) is marked *p*. The seventh staff (measures 55-59) is marked *f*. The eighth staff (measures 60-65) is marked *p*. The ninth staff (measures 66-70) is marked *f*. The tenth staff (measures 71-71) is marked *f*.

Violino 2 **Concerto Quarto**Artemio Motta  
op. 1 No. 4

Allegro



## Allegro





### Grave



## Allegro

Musical score for Violino 2, Allegro, measures 1-51. The score is written in G major (one sharp) and 12/8 time. The tempo is marked Allegro. The score consists of ten staves of music, with measure numbers 5, 10, 14, 19, 24, 29, 34, 40, 44, 47, and 51 indicated at the beginning of each staff. The music features a variety of rhythmic patterns, including eighth and sixteenth notes, and rests. The final measure (51) is marked with a forte (f) dynamic.



# Concerto Quinto

## Violino 2

Artemio Motta  
op. 1 No. 5

Andante, e cantabile

Solo

5

8

11 Tutti

14

18

21

24

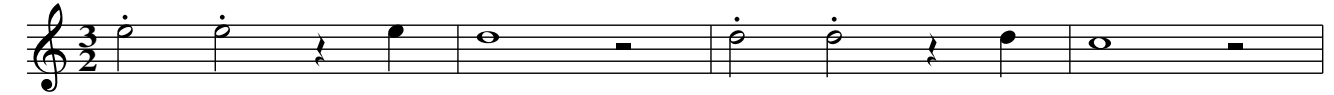
27

30

33

*tr tr*

## Grave



## Allegro



Musical score for Violino 2, measures 22 through 48. The score is written in treble clef and 4/4 time. It features a variety of rhythmic patterns, including eighth and sixteenth notes, and rests. The key signature is one sharp (F#).

Measures 22-24: Eighth notes, quarter notes, and a half note.

Measures 25-28: Quarter notes, eighth notes, and a half note.

Measures 29-33: Quarter notes, eighth notes, and a half note.

Measures 34-36: Sixteenth notes, eighth notes, and quarter notes.

Measures 37-39: Quarter notes, eighth notes, and a half note.

Measures 40-43: Quarter notes, eighth notes, and a half note.

Measures 44-45: Quarter notes, eighth notes, and a half note.

Measures 46-47: Sixteenth notes, eighth notes, and quarter notes.

Measures 48: Quarter notes, eighth notes, and a half note.

## Adagio

Musical score for Adagio, measures 7 through 13. The score is written in treble clef and 3/4 time. It features a variety of rhythmic patterns, including quarter notes, eighth notes, and a half note.

Measures 7-13: Quarter notes, eighth notes, and a half note.

## Allegro

Musical score for Violino 2, Allegro, measures 1-64. The score is written in treble clef, 3/4 time, and G major. The tempo is marked Allegro. The score consists of ten staves of music, with measure numbers 7, 14, 21, 28, 34, 40, 46, 54, 57, 60, and 64 indicated at the beginning of each staff. The music features a variety of rhythmic patterns, including eighth and sixteenth notes, and rests. Dynamics markings *p* and *f* are present in measures 21 and 22. The score concludes with a double bar line at measure 64.

# Concerto Sesto

Artemio Motta  
op. 1 No. 6

## Violino 2

Presto

5

10

14

18

23

28

33

39

45

*p* *f* *p* *f*

## Adagio



## Presto, e spiccato



38



43



47



50



53



56




60



*p* *p* *f*

*p* *f*

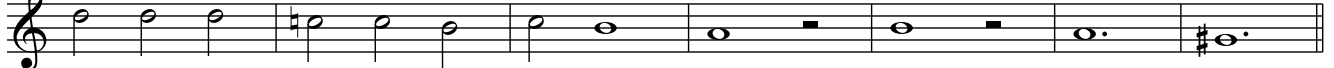
## Adagio



6



12



## Allegro

Musical score for Violino 2, Allegro, measures 1-24. The score is written in treble clef with a key signature of one sharp (F#) and a time signature of 12/8. The music consists of nine staves of notation, each starting with a measure number (4, 7, 9, 12, 15, 18, 20, 22, 24). The notation includes various rhythmic values (quarter, eighth, and sixteenth notes), rests, and accidentals (sharps and naturals). The piece concludes with a double bar line and repeat dots at the end of the final staff.



# Concerto Settimo

Artemio Motta  
op. 1 No. 7

## Violino 2

Andante e spiccato

5

9

13

16

20

23

27

31

*p*

*f*

*p*

*f*

Grave

## Allegro

Musical score for Violino 2, Allegro, measures 1-28. The score is written in treble clef, 2/4 time signature, and D minor. The tempo is marked Allegro. The score consists of ten staves of music, each starting with a measure number (1, 4, 6, 9, 12, 15, 18, 22, 25, 28). The music features a variety of rhythmic patterns, including eighth and sixteenth notes, and rests. The key signature is D minor, indicated by one flat (Bb).

31

33

36

39

42

45

Grave

4

7

## Allegro

*p*

*f*

*p*

*f*

# Concerto Ottavo

Artemio Motta  
op. 1 No. 8

## Violino 2

Allegro

5

7

9

14

16

19

22

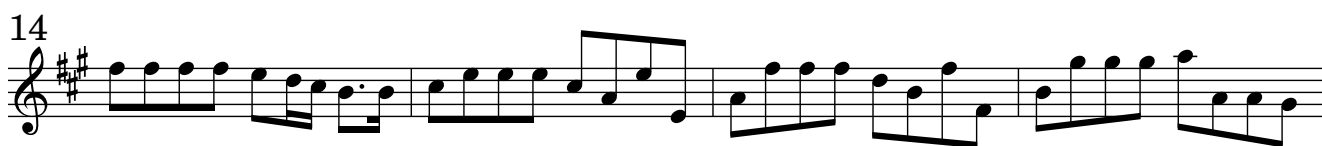
24

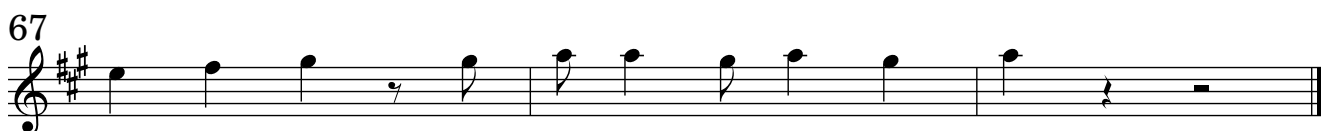
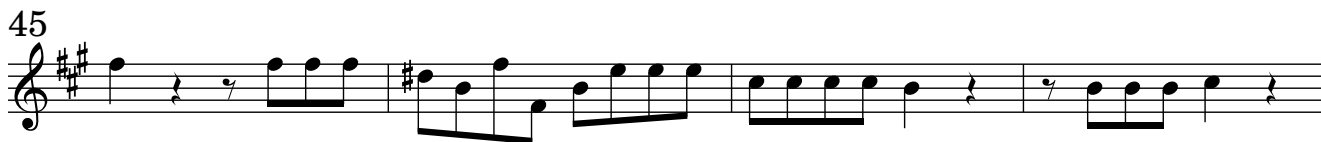
Grave

27

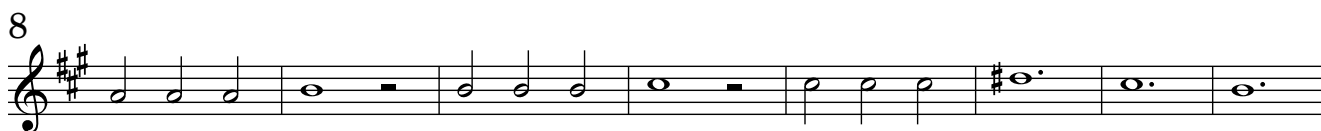
30

## Allegro





### Grave



## Presto

2

11

19

27

38

46

57

67

79

88

97

The image shows a page of musical notation for Violino 2, starting at measure 11 and ending at measure 100. The tempo is marked 'Presto'. The key signature is A major (three sharps: F#, C#, G#) and the time signature is 3/8. The score consists of ten staves of music. The first staff begins with a '2' above the staff, indicating a second ending. The music features a variety of rhythmic patterns, including eighth and sixteenth notes, and rests. The notation includes slurs, ties, and dynamic markings such as accents and hairpins. The piece concludes with a double bar line at the end of the tenth staff.



# Concerto Nono

Artemio Motta  
op. 1 No. 9

## Violino 2

Allegro

4 *a 3* *tutti*  
*p* *f*

8

11

14 *a 3* *tutti*  
*p* *f*

17

19 *a 3*

22 *tutti*

25 *p*

28

## Grave

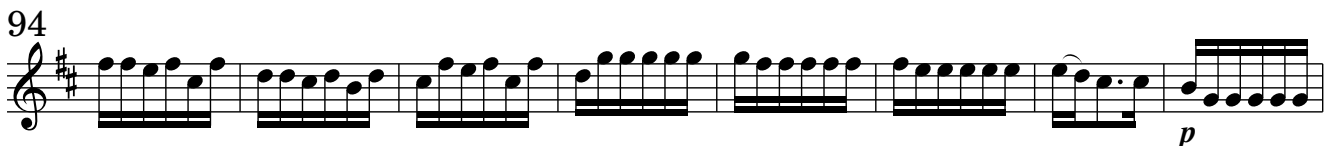
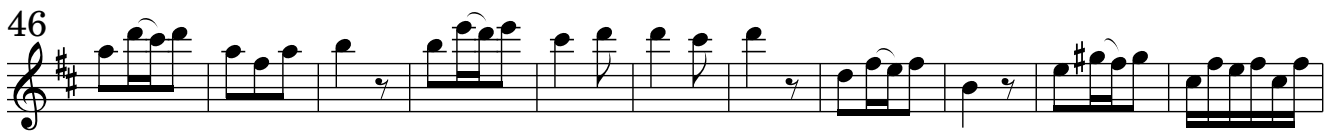
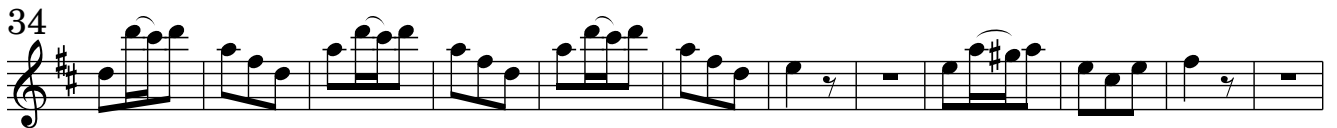
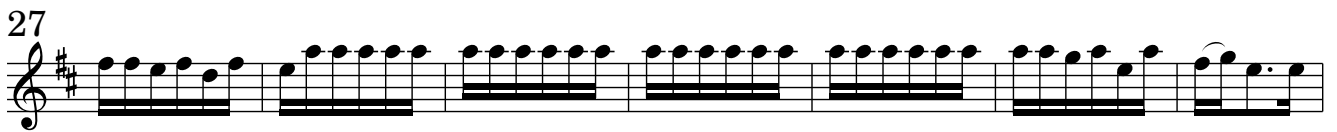
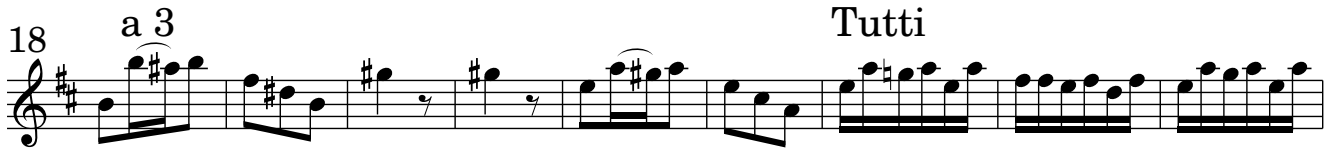
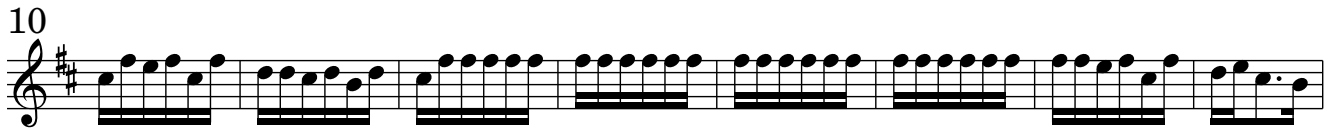


## Presto





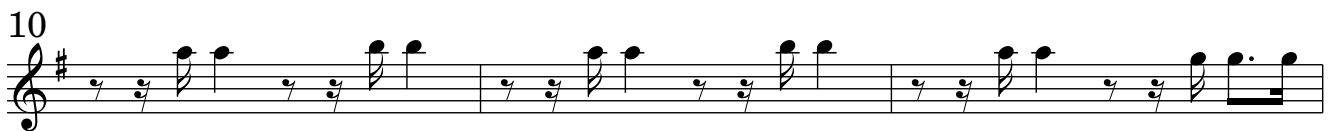
## Allegro



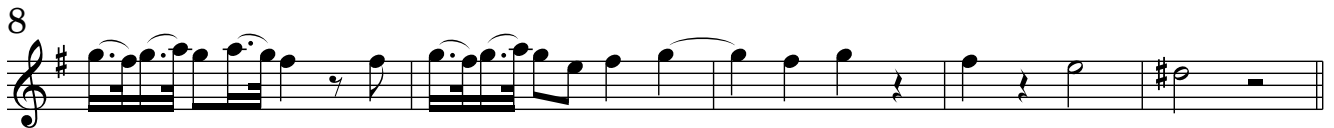
# Concerto Decimo

Artemio Motta  
op. 1 No. 10

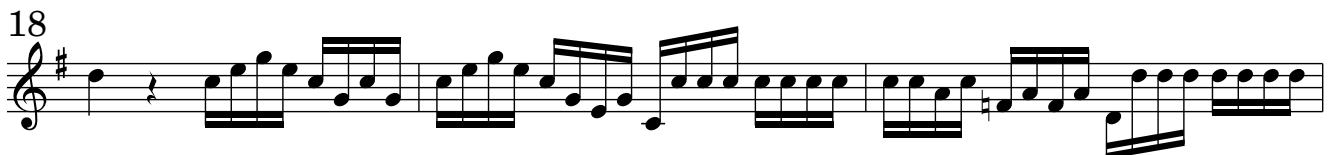
Presto



## Grave



## Allegro



28



31



34



37



40



44



47



49

**Grave**

8



## Allegro

12/8

*p*

6

*f*

11

16

*p*

21

26

31

36

40

43

46

49